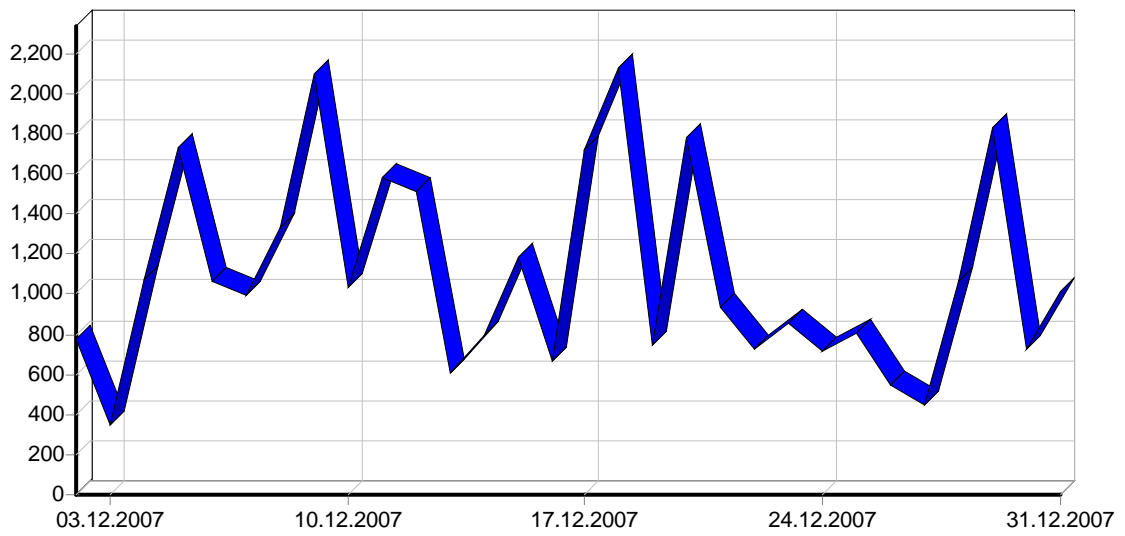
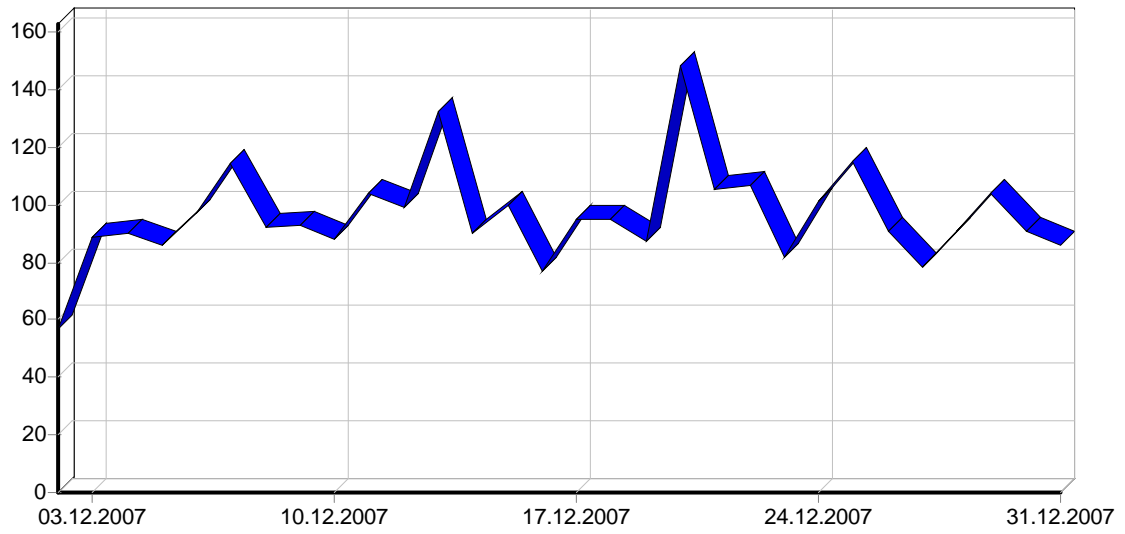
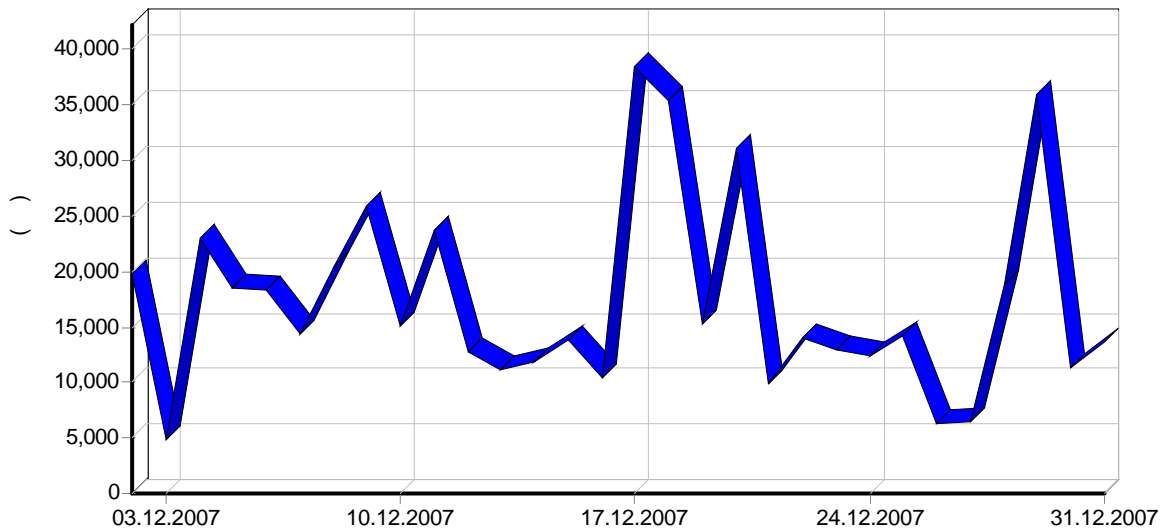
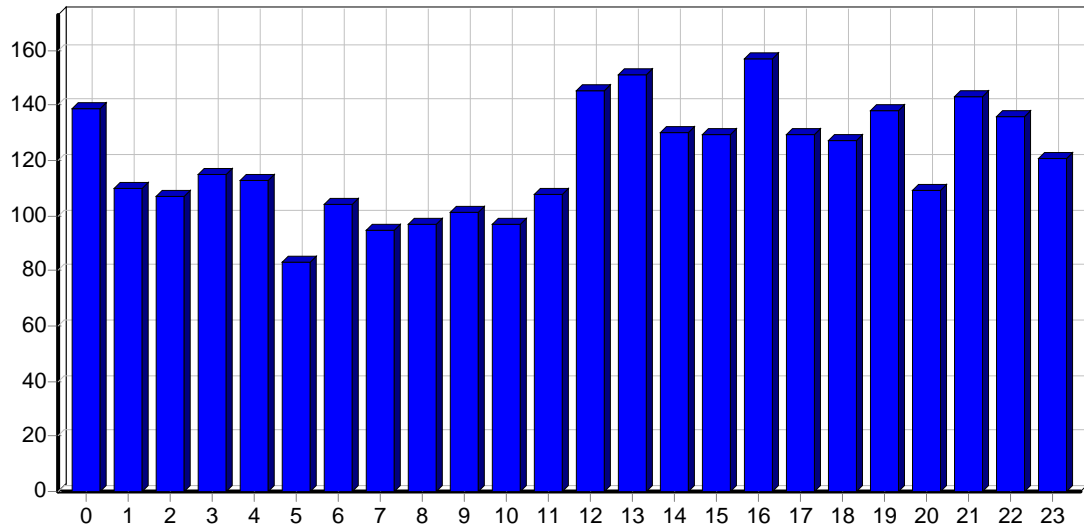


	32,829
	1,094
	11.38
	5,493
	2,337
	8,111
	270
	2.81
	2,884
	96
IP-	1,292
	508.23
	16.94
	15.85
	180.45

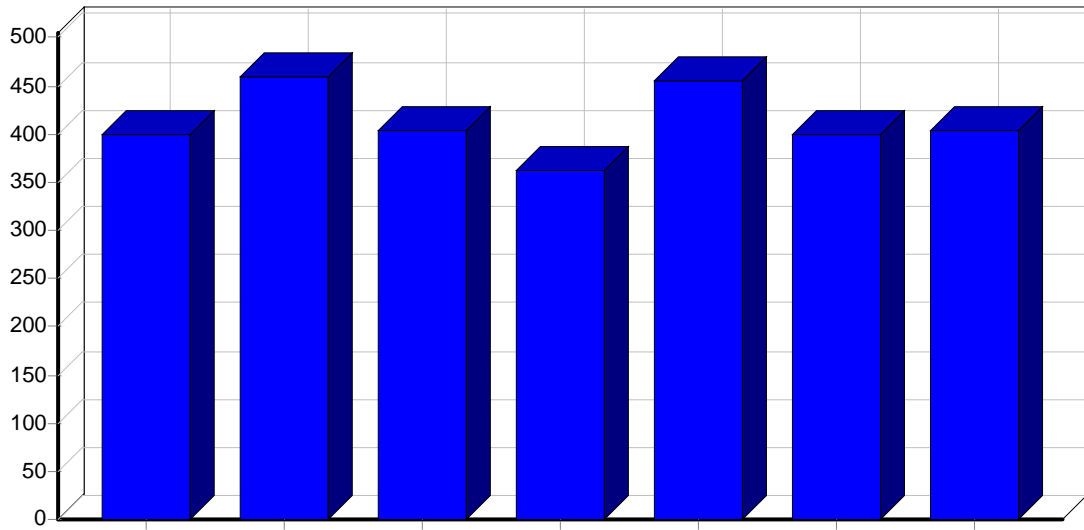




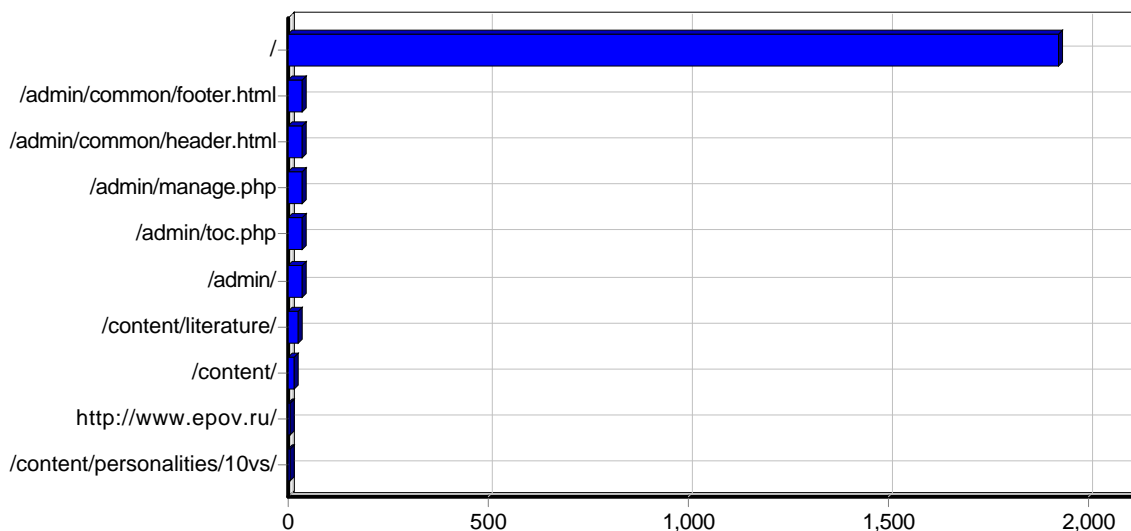
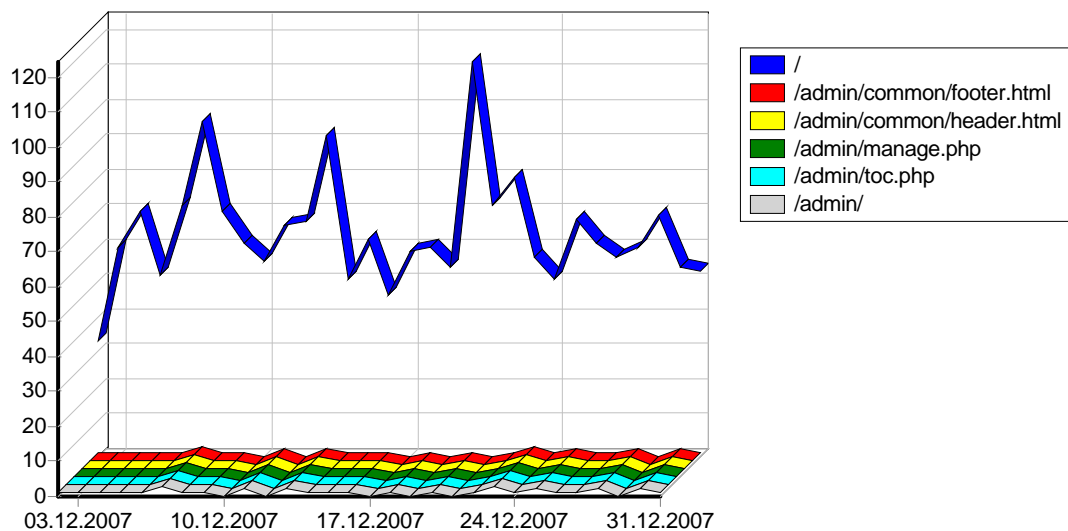
					()
02.12.2007	779	242	57	20:45	19,717
03.12.2007	347	118	89	58	4,809
04.12.2007	1,076	304	90	15:49	23,068
05.12.2007	1,725	325	86	08:10	18,568
06.12.2007	1,059	284	97	03:42	18,405
07.12.2007	993	300	114	04:07	14,368
08.12.2007	1,332	345	92	07:23	20,534
09.12.2007	2,095	417	93	08:39	25,923
10.12.2007	1,036	192	88	10:34	15,079
11.12.2007	1,578	276	104	07:16	23,652
12.12.2007	1,516	362	99	10:17	12,735
13.12.2007	605	216	132	04:09	11,216
14.12.2007	797	166	90	07:38	11,788
15.12.2007	1,182	272	100	02:35	13,861
16.12.2007	665	184	77	07:42	10,381
17.12.2007	1,721	297	95	03:57	38,406
18.12.2007	2,124	443	95	07:14	35,389
19.12.2007	748	153	87	09:06	15,214
20.12.2007	1,782	616	148	04:25	31,028
21.12.2007	937	209	105	04:56	9,823
22.12.2007	725	355	107	03:44	14,094
23.12.2007	858	241	82	04:08	12,951
24.12.2007	713	126	101	02:11	12,430
25.12.2007	806	195	115	01:43	14,246
26.12.2007	542	187	91	08:32	6,364
27.12.2007	451	169	78	02:37	6,501
28.12.2007	1,060	213	91	01:06	18,852
29.12.2007	1,830	411	104	05:53	35,969
30.12.2007	730	273	91	02:27	11,380
31.12.2007	1,017	220	86	07:00	13,664
	32,829	8,111	2,884	05:58	520,429



			()
00:00 - 00:59	1,435	139	29,746
01:00 - 01:59	2,425	110	47,885
02:00 - 02:59	1,686	107	33,190
03:00 - 03:59	763	115	12,881
04:00 - 04:59	1,312	113	23,293
05:00 - 05:59	1,296	83	20,660
06:00 - 06:59	909	104	7,182
07:00 - 07:59	861	95	6,762
08:00 - 08:59	893	97	13,040
09:00 - 09:59	860	101	8,162
10:00 - 10:59	653	97	6,560
11:00 - 11:59	689	108	7,905
12:00 - 12:59	731	145	9,813
13:00 - 13:59	1,604	151	23,666
14:00 - 14:59	1,872	130	26,918
15:00 - 15:59	1,978	129	39,093
16:00 - 16:59	1,669	157	31,083
17:00 - 17:59	1,775	129	18,288
18:00 - 18:59	1,653	127	24,424
19:00 - 19:59	1,340	138	15,284
20:00 - 20:59	1,229	109	18,756
21:00 - 21:59	1,155	143	22,261
22:00 - 22:59	2,302	136	36,989
23:00 - 23:59	1,739	121	36,576
	32,829	2,884	520,429

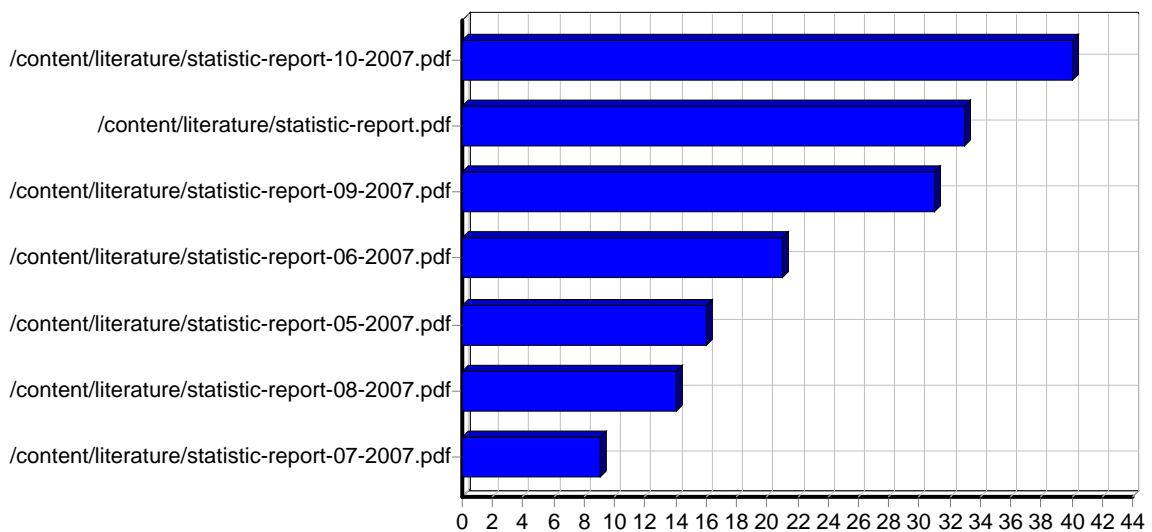
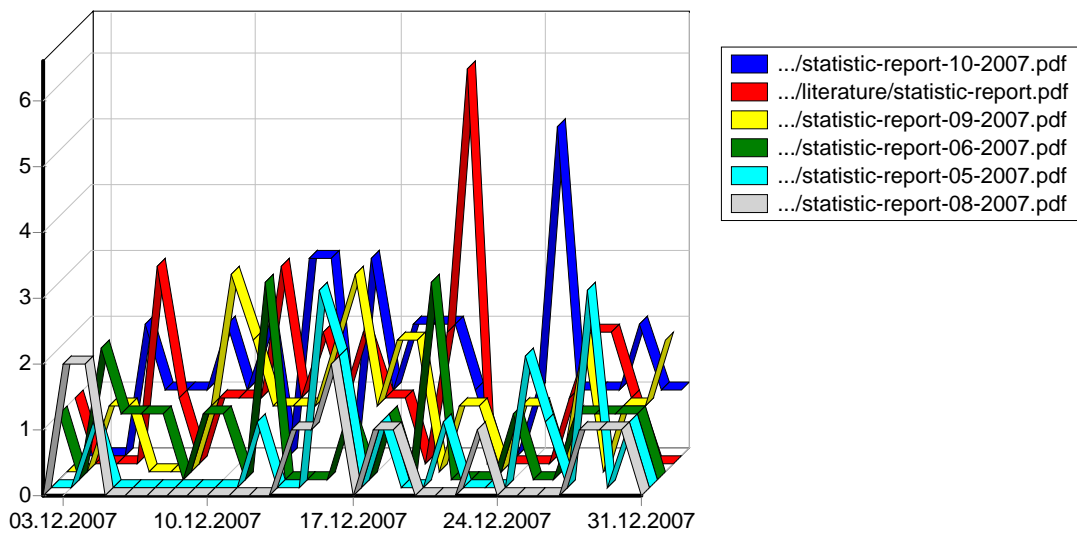


			()
	5,127	400	80,354
	4,834	459	84,389
	5,584	404	96,356
	4,531	363	52,883
	3,897	455	67,151
	3,787	400	54,833
	5,069	403	84,459
	32,829	2,884	520,429

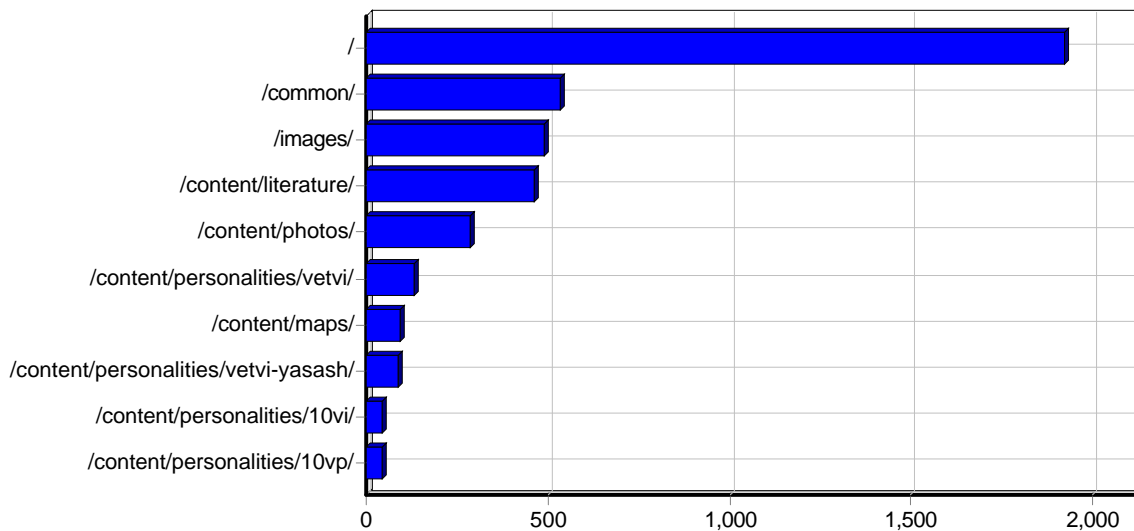
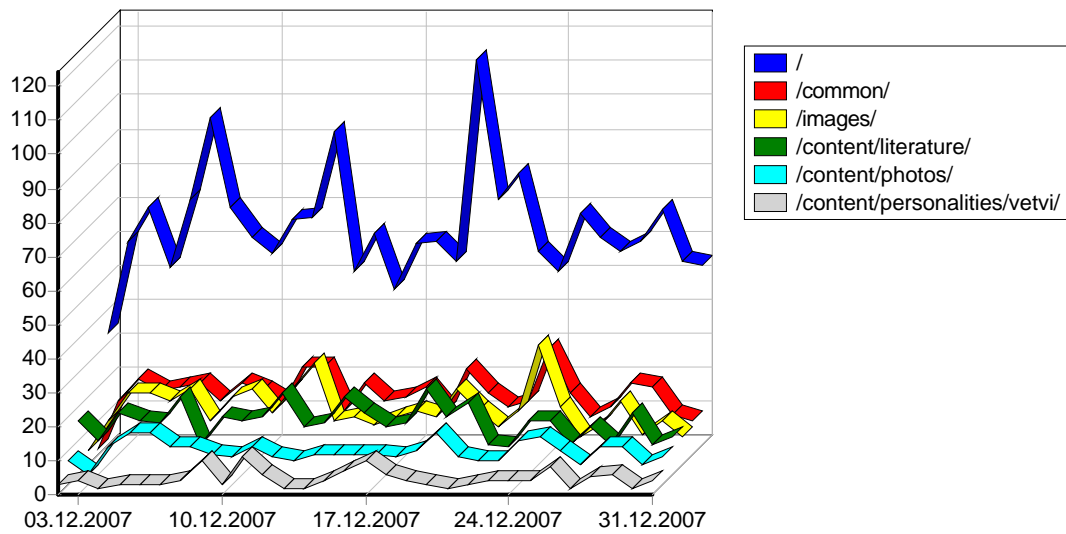


					()
1	http://www.epov.ru/	7,664	0	1,922	136,748
2	http://www.epov.ru/admin/common/footer.html	33	0	33	2
3	http://www.epov.ru/admin/common/header.html	33	0	33	2
4	http://www.epov.ru/admin/manage.php	71	0	33	7,182
5	http://www.epov.ru/admin/toc.php	33	0	33	35
6	http://www.epov.ru/admin/	36	0	33	18
7	http://www.epov.ru/content/literature/	30	0	25	2
8	http://www.epov.ru/content/	33	0	15	9
9	http://www.epov.ruhttp://www.epov.ru/	8	0	5	169
10	http://www.epov.ru/content/personalities/10vs/	3	0	3	0
11	http://www.epov.ru/content/personalities/10vn/	3	0	3	0
12	http://www.epov.ru./	40	0	3	438
13	http://www.epov.ru/content/personalities/9vi/	2	0	2	0
14	http://www.epov.ru/content/personalities/10sn/	2	0	2	0

15	http://www.epov.ru/content/personalities/10vi/	2	0	2	0
16	http://www.epov.ru/content/personalities/6/	1	0	1	0
17	http://www.epov.ru/content/personalities/7/	1	0	1	0
18	http://www.epov.ru/content/personalities/8vi/	1	0	1	0
19	http://www.epov.ru/content/personalities/vetvi/	1	0	1	0
20	http://www.epov.ru/content/personalities/9vs/	1	0	1	0
21	http://www.epov.ru/content/personalities/10vm/	1	0	1	0
22	http://www.epov.ru/content/personalities/1/	1	0	1	0
23	http://www.epov.ru/./	2	0	1	10
24	http://www.epov.ru/content/personalities/2/	1	0	1	0
25	http://www.epov.ru/content/personalities/5/	1	0	1	0
26	http://www.epov.ru/content/personalities/4/	1	0	1	0
27	http://www.epov.ru/content/personalities/3/	1	0	1	0
		8,006	0	-	144,620

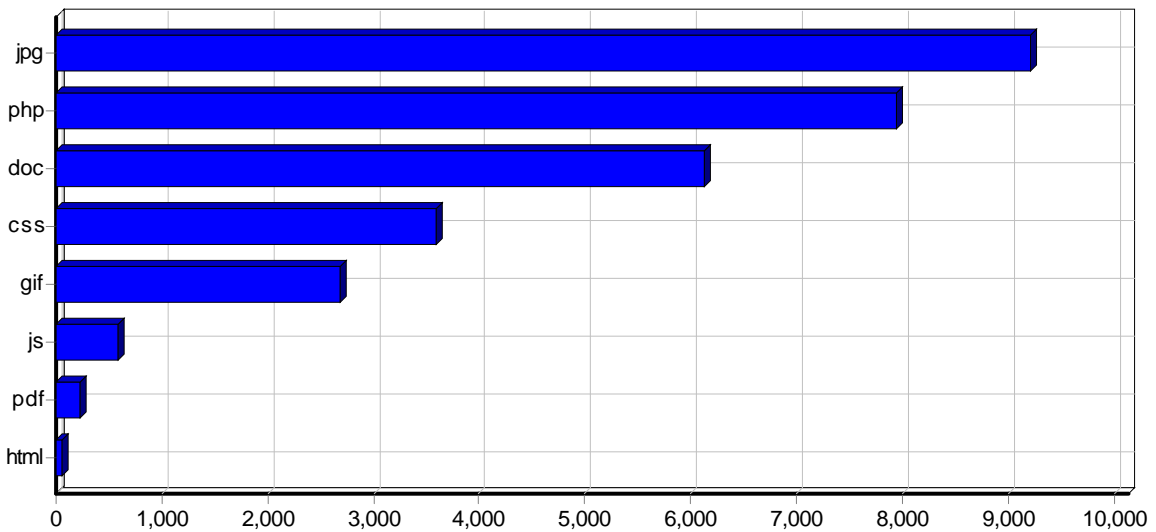
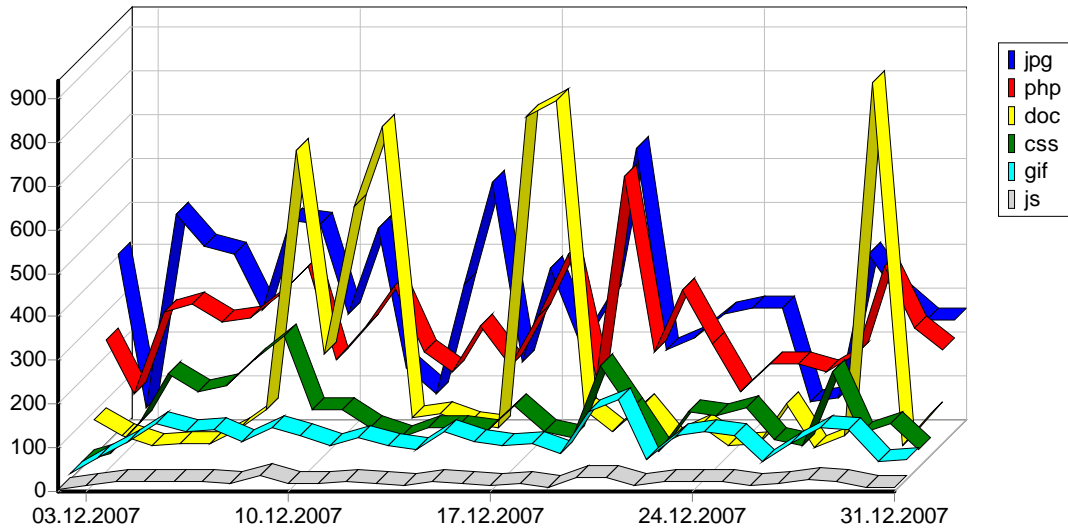


					()
1	http://www.epov.ru/content/literature/statistic-report-10-2007.pdf	58	13	40	4,916
2	http://www.epov.ru/content/literature/statistic-report.pdf	51	14	33	5,903
3	http://www.epov.ru/content/literature/statistic-report-09-2007.pdf	43	10	31	3,906
4	http://www.epov.ru/content/literature/statistic-report-06-2007.pdf	27	1	21	1,338
5	http://www.epov.ru/content/literature/statistic-report-05-2007.pdf	18	2	16	982
6	http://www.epov.ru/content/literature/statistic-report-08-2007.pdf	16	2	14	1,510
7	http://www.epov.ru/content/literature/statistic-report-07-2007.pdf	10	0	9	1,061
		223	42	-	19,619

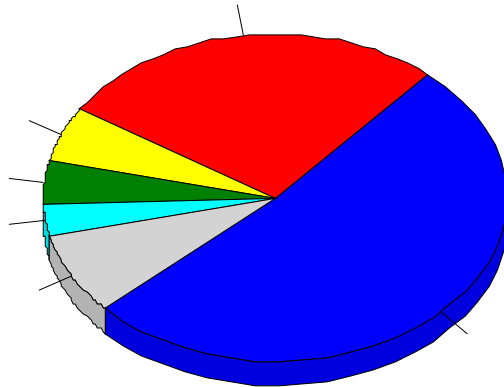
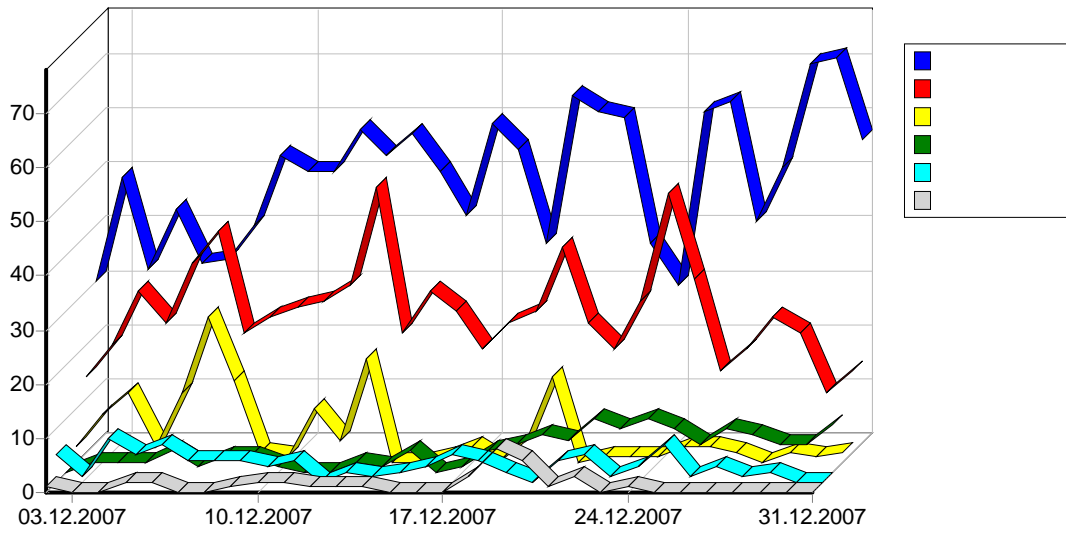


					()
1	http://www.epov.ru/	7,664	0	1,922	136,748
2	http://www.epov.ru/common/	4,087	0	533	6,156
3	http://www.epov.ru/images/	4,775	12	491	26,550

4	http://www.epov.ru/content/literature/	1,291	52	462	70,917
5	http://www.epov.ru/content/photos/	6,054	11	286	164,991
6	http://www.epov.ru/content/personalities/vetvi/	471	0	134	6,489
7	http://www.epov.ru/content/maps/	390	3	94	22,515
8	http://www.epov.ru/content/personalities/vetvi-yasash/	218	0	88	3,494
9	http://www.epov.ru/content/personalities/10vi/	614	0	44	8,216
10	http://www.epov.ru/content/personalities/10vp/	430	0	43	5,368
11	http://www.epov.ru/content/personalities/10vn/	537	0	38	6,210
12	http://www.epov.ru/content/personalities/10vs/	793	0	34	14,589
13	http://www.epov.ru/content/personalities/5/	90	0	33	1,142
14	http://www.epov.ru/admin/common/	169	0	33	45
15	http://www.epov.ru/admin/	140	0	33	7,236
16	http://www.epov.ru/admin/images/	33	0	33	1
17	http://www.epov.ru/content/personalities/7/	110	0	30	1,148
18	http://www.epov.ru/content/personalities/6/	94	0	28	1,143
19	http://www.epov.ru/content/personalities/9vp/	139	0	28	1,747
20	http://www.epov.ru/content/broshura/	332	0	28	9,551
21	http://www.epov.ru/content/personalities/9vs/	230	0	24	3,116
22	http://www.epov.ru/content/personalities/3/	66	0	23	822
23	http://www.epov.ru/content/personalities/9vi/	272	0	22	3,188
24	http://www.epov.ru/content/personalities/9vn/	207	0	21	2,598
25	http://www.epov.ru/content/personalities/4/	94	0	21	1,259
26	http://www.epov.ru/content/personalities/10sn/	321	0	20	4,336
27	http://www.epov.ru/content/personalities/7sn/	51	0	18	526
28	http://www.epov.ru/content/personalities/8vn/	68	0	17	793
29	http://www.epov.ru/content/personalities/8vp/	36	0	17	429
30	http://www.epov.ru/content/personalities/9sn/	160	0	17	2,029
31	http://www.epov.ru/content/personalities/8sn/	69	0	17	826
32	http://www.epov.ru/content/personalities/10vm/	126	0	16	1,516
33	http://www.epov.ru/content/	33	0	15	9
34	http://www.epov.ru/content/personalities/2/	27	0	14	387
35	http://www.epov.ru/content/personalities/8vs/	42	0	13	620
36	http://www.epov.ru/content/personalities/8vi/	45	0	13	542
37	http://www.epov.ru/content/personalities/1/	14	0	12	160
38	http://www.epov.ru/content/personalities/7ss/	37	0	12	353
39	http://www.epov.ru/content/personalities/7sm/	33	0	12	312
40	http://www.epov.ru/content/personalities/0/	9	0	9	123
41	http://www.epov.ru/content/personalities/9vm/	15	0	9	182
42	http://www.epov.ru/content/personalities/8vm/	8	0	8	100
43	http://www.epov.ru http://www.epov.ru/	8	0	5	169
44	http://www.epov.ru/	40	0	3	438
45	http://www.epov.ru/	2	0	1	10
		30,444	78	-	519,114

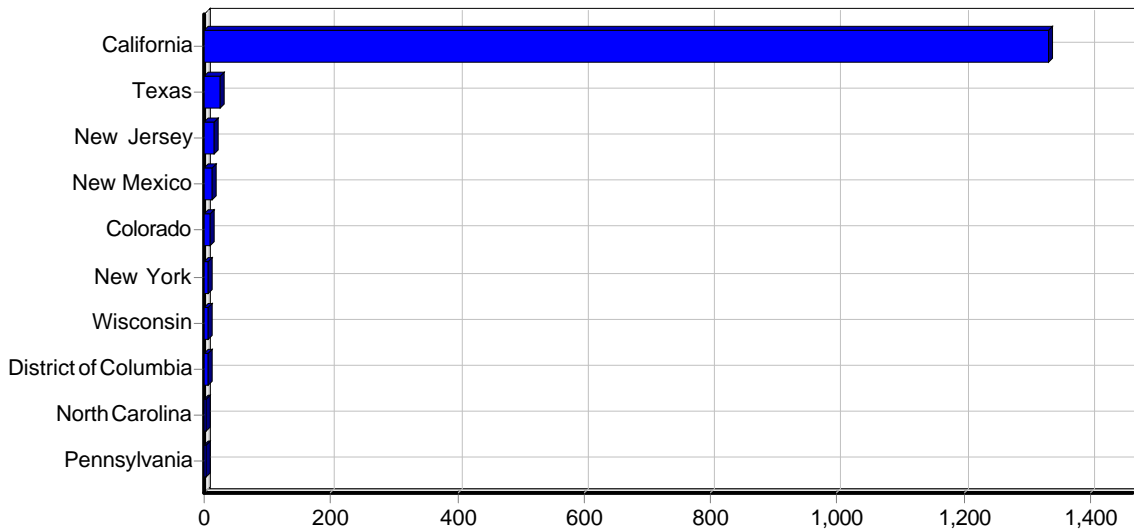


				()
1	jpg	9,216	27	232,913
2	php	7,940	0	144,615
3	doc	6,127	9	114,984
4	css	3,600	0	5,510
5	gif	2,682	0	780
6	js	590	0	686
7	pdf	223	42	19,619
8	html	66	0	5
		30,444	78	519,114



				%	()
1		3,237	1,488	51.60%	54,760
2		21,420	789	27.36%	293,401
3		883	159	5.51%	16,064
4		461	123	4.26%	13,858
5		2,997	91	3.16%	68,359
6		78	35	1.21%	1,949
7		1,252	30	1.04%	22,834
8		89	20	0.69%	1,740
9		21	13	0.45%	345
10		368	13	0.45%	5,804
11		279	12	0.42%	7,315
12		68	12	0.42%	949
13		26	11	0.38%	466
14		44	10	0.35%	335

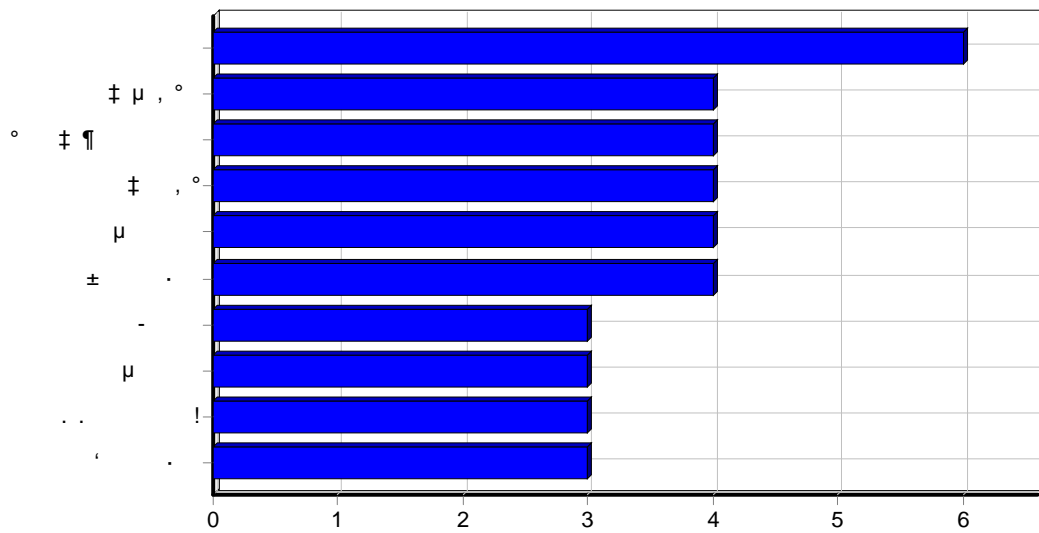
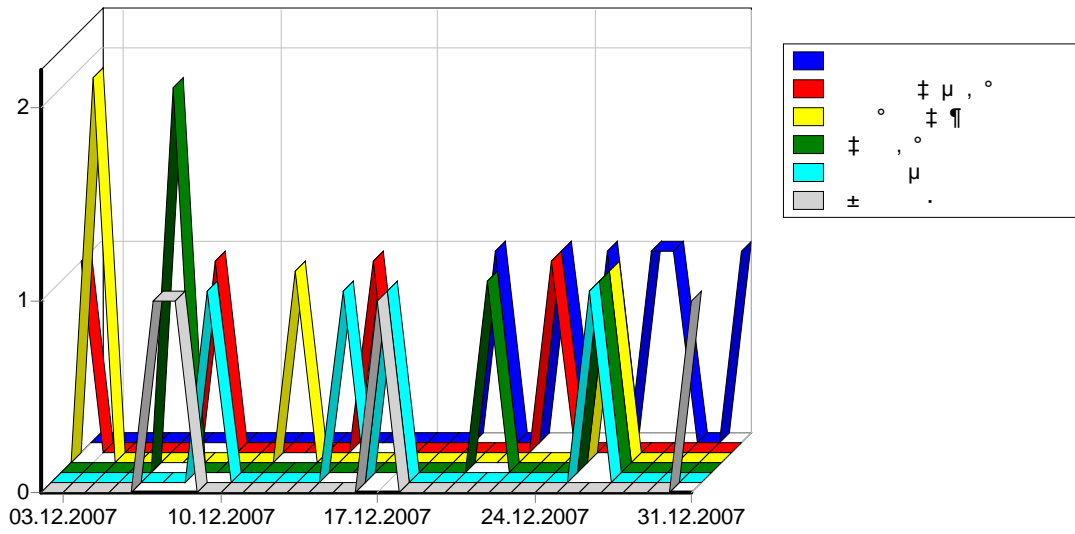
15		125	10	0.35%	2,436
16		54	6	0.21%	865
17		10	6	0.21%	282
18		98	5	0.17%	556
19		1,033	5	0.17%	24,281
20		11	5	0.17%	204
21		7	4	0.14%	46
22		9	4	0.14%	57
23		19	3	0.10%	216
24		10	3	0.10%	147
25		8	2	0.07%	486
26		33	2	0.07%	703
27		2	2	0.07%	11
28		6	2	0.07%	152
29		11	2	0.07%	79
30		14	1	0.03%	190
31		1	1	0.03%	5
32		1	1	0.03%	7
33		1	1	0.03%	198
34		1	1	0.03%	7
35		4	1	0.03%	20
36		21	1	0.03%	250
37		1	1	0.03%	7
38		1	1	0.03%	5
39		1	1	0.03%	7
40		4	1	0.03%	240
41		16	1	0.03%	197
42	-	98	1	0.03%	536
43		1	1	0.03%	5
44		2	1	0.03%	13
45		2	1	0.03%	13
46		1	1	0.03%	5
		32,829	2,884	100.00%	520,429



				()
1	California	2,807	1,333	48,488
2	Texas	95	26	1,441
3	New Jersey	18	15	240
4	New Mexico	12	12	40
5	Colorado	11	8	364
6	New York	9	6	230
7	Wisconsin	17	6	110
8	District of Columbia	23	6	134
9	North Carolina	4	4	0
10	Pennsylvania	2	2	13
11	Illinois	3	2	9
12	Washington	2	1	0
13	Florida	1	1	5
14	Maryland	2	1	13
15	Kansas	14	1	101
		3,020	1,424	51,195

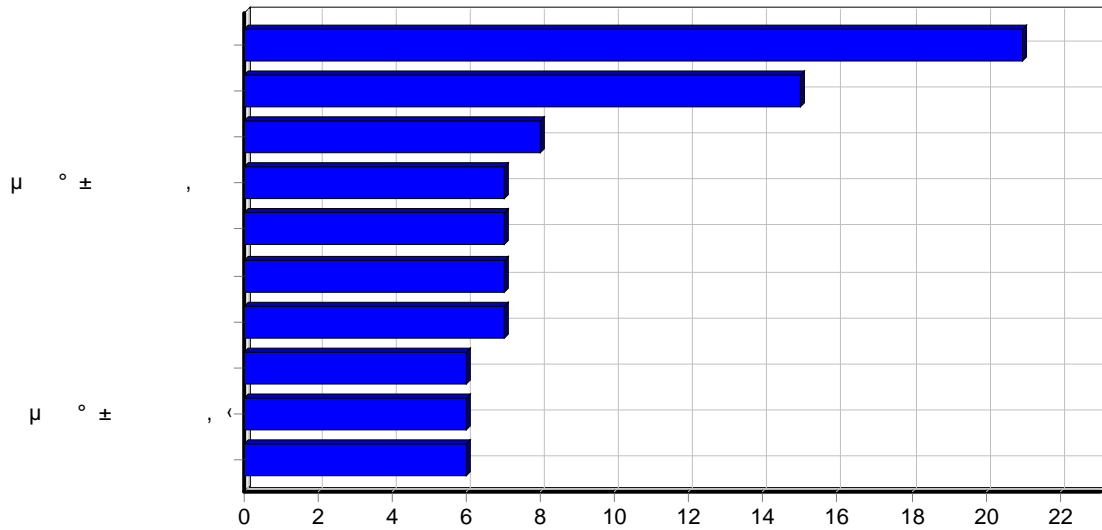
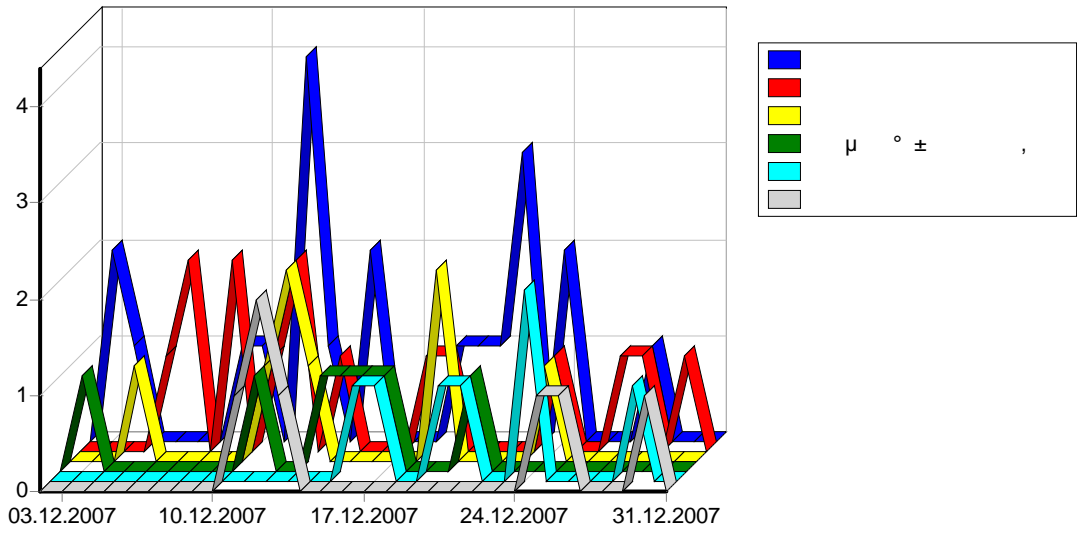
				()
1	Sunnyvale, California,	1,426	1,121	24,407
2	Moscow,	10,072	385	110,025
3	Mountain View, California,	1,311	198	23,013
4	Kharkiv,	140	126	774
5	Frankfurt Am Main,	349	96	11,381
6	Saint Petersburg,	1,739	61	23,537
7	Novosibirsk,	1,817	55	23,471
8	Chita,	473	28	5,226
9	Tokyo,	626	22	8,038
10	Khabarovsk,	410	18	5,164
11	San Antonio, Texas,	27	15	106
12	Sayreville, New Jersey,	14	14	0
13	Krasnodar,	461	14	9,165
14	Irkutsk,	419	13	6,360
15	Ulan-Ude,	120	12	1,996
16	Albuquerque, New Mexico,	12	12	40
17	Tallinn,	279	12	7,315
18	Penza,	135	11	1,793
19	Livani,	28	11	817
20	Erfurt,	39	10	615
21	Yekaterinburg,	74	10	1,177
22	Rivne,	334	10	8,685
23	Beijing,	29	10	663
24	Riga,	61	9	923
25	Chelyabinsk,	127	9	1,990
26	Amur,	371	9	6,507
27	Kiev,	211	9	2,586
28	Amsterdam,	16	8	81
29	Yakutsk,	220	8	3,662
30	Vladivostok,	184	8	4,094

31	Leipzig,	8	8	36
32	Stockholm,	20	8	435
33	Perm,	35	8	950
34	Englewood, Colorado,	8	7	129
35	Henan,	15	6	230
36	Minsk,	65	6	806
37	Washington, District of Columbia,	23	6	134
38	Hangzhou,	5	5	27
39	Barnaul,	2,423	5	48,941
40	Krasnoyarsk,	34	5	753
41	Kaliningrad,	173	5	2,078
42	Kazan,	24	5	327
43	San Francisco, California,	58	5	729
44	Almaty,	58	5	596
45	Cupertino, California,	6	5	171
46	Dallas, Texas,	33	5	562
47	Fond Du Lac, Wisconsin,	15	5	97
48	Abakan,	448	4	8,906
49	Karaganda,	41	4	1,351
50	Bangkok,	10	4	191
		25,026	2,435	361,083
		28,328	2,662	425,162



1		6
2	± μ, °	4
3	° ± ¶	4
4	±, °	4
5	μ	4
6	± .	4
7	-	3
8	μ	3
9	.. !	3
10	' .	3
11		3
12		2
13	° ± ¶	2
14	» μ ° ± μ °2007	2

15	, ‡ μ μ μ , ‹	2
16		2
17		2
18		2
19	" • ‹ « ' — ‹ ™ » ¬ •	2
20	nsmharbin@risp.ru	2
21	, °	2
22	μ	2
23		2
24	μ ° ± , ‹ — ° ± ° ° » μ	2
25	μ ° ± , ‹ . ° ± ° ° » μ	2
26		1
27		1
28		1
29		1
30		1
31	-	1
32		1
33		1
34		1
35		1
36	1	1
37		1
38		1
39		1
40		1
41		1
42		1
43		1
44		1
45		1
46		1
47		1
48	-	1
49		1
50		1
		94
		383



1		21
2		15
3		8
4	$\mu \circ \pm ,$	7
5		7
6		7
7		7
8		6
9	$\mu \circ \pm , \leftarrow$	6
10		6
11	$\rangle \circ$	6
12	-	6
13		6
14		5
15	$\circ \pm \uparrow$	5
16	\leftarrow	5

17	„ ° »	5
18	μ	5
19		4
20		4
21	.	4
22	¶ μ ‹	4
23	‡ , °	4
24	μ , ‹	4
25	± » ° ,	4
26		4
27	'	4
28		4
29	± ° „	4
30	± .	4
31		4
32	μ	4
33	‡ μ , °	4
34	1	4
35	° ‡ ° ,	4
36		4
37		4
38		4
39		3
40		3
41		3
42	” μ ° ± , ‹	3
43		3
44	. .	3
45		3
46		3
47	. ° ± ° ° » μ	3
48		3
49	°	3
50		3
		249
		1,058