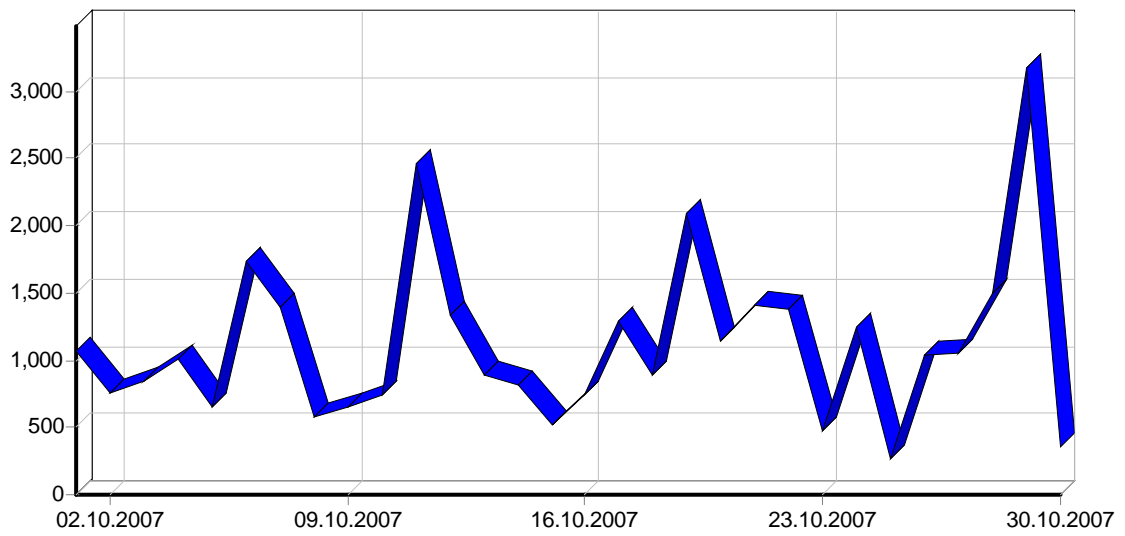
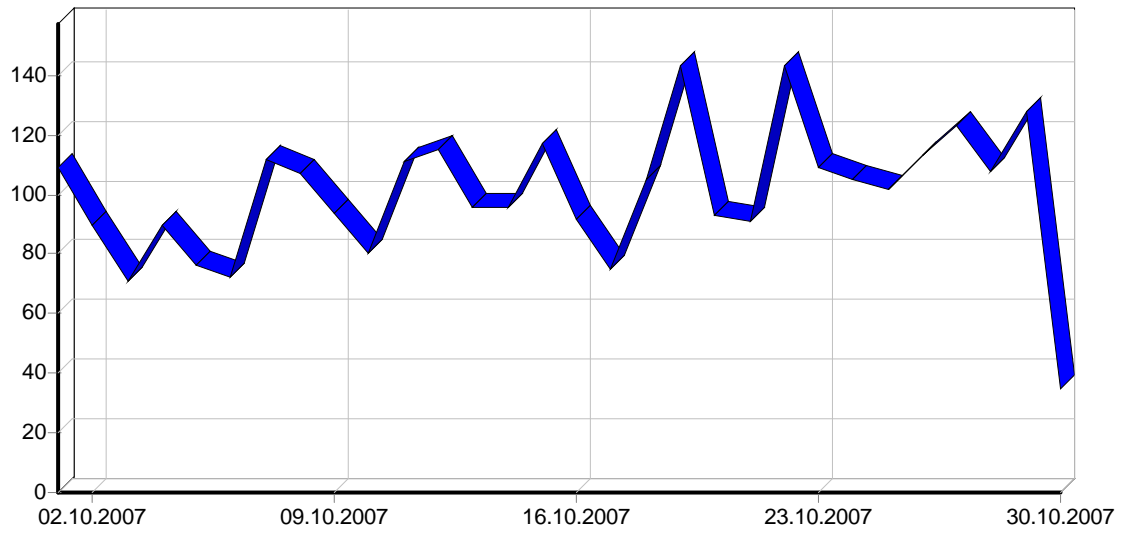
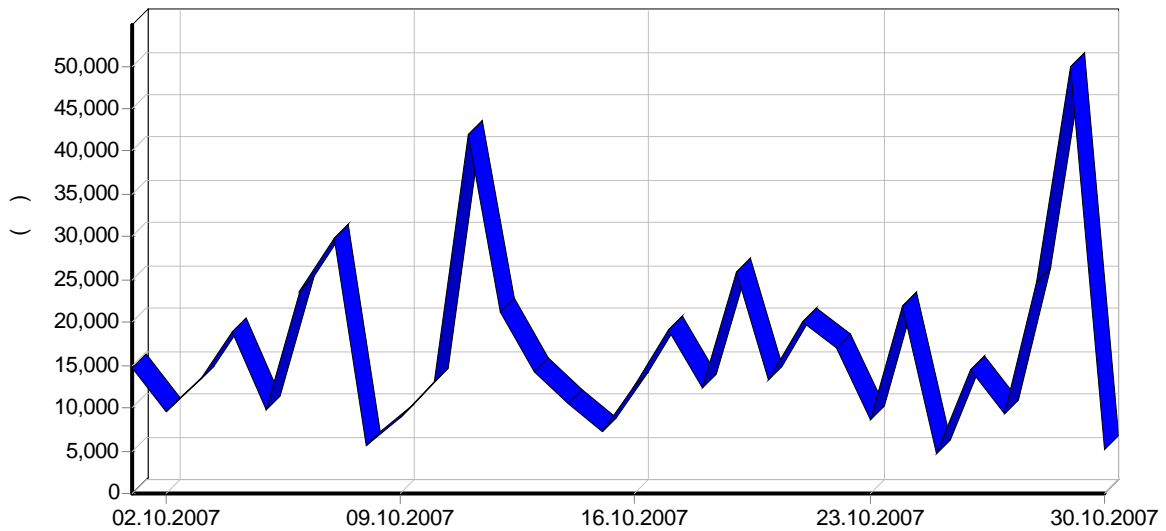
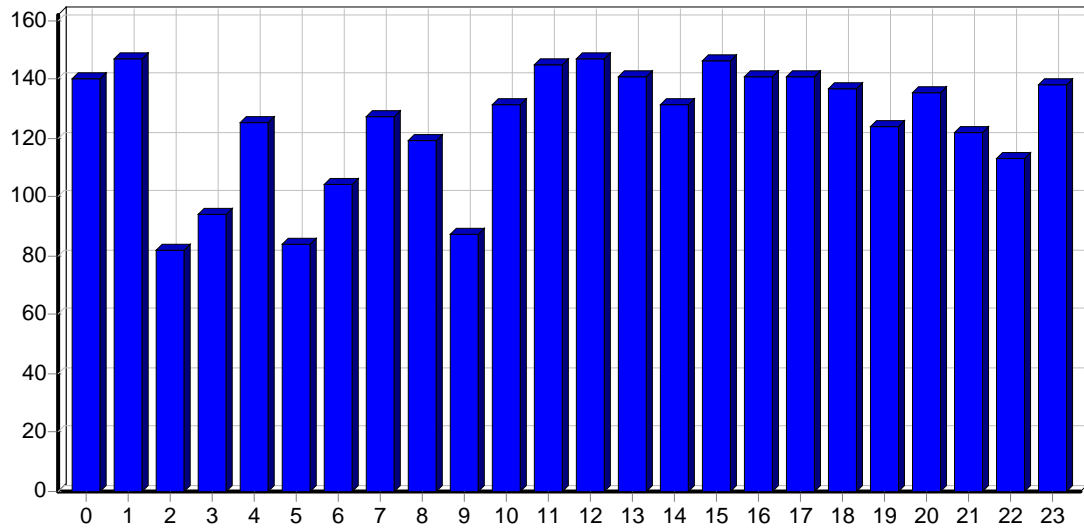


	33,492
	1,116
	11.16
	4,035
	2,364
	10,826
	360
	3.61
	3,001
	100
IP-	1,295
	489.65
	16.32
	14.97
	167.08

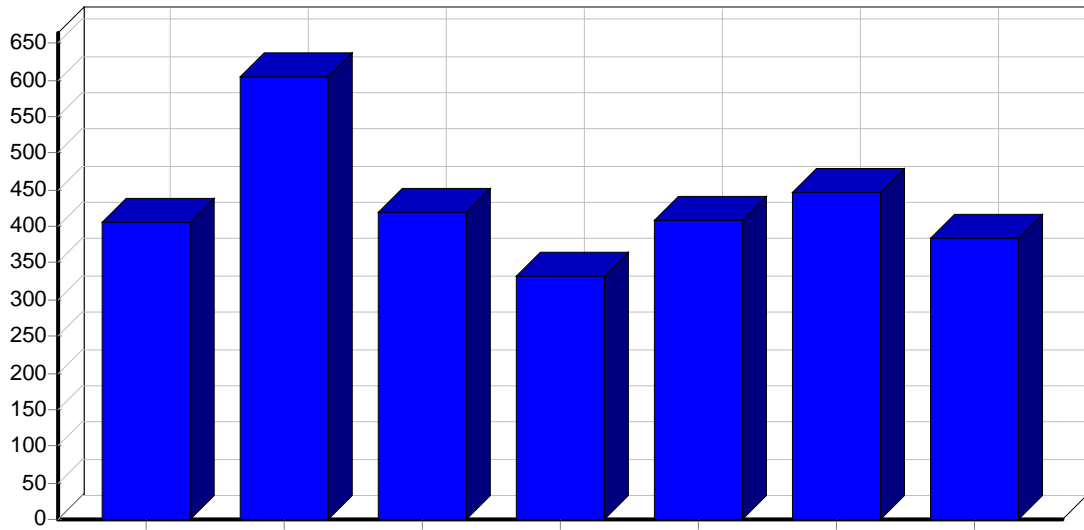




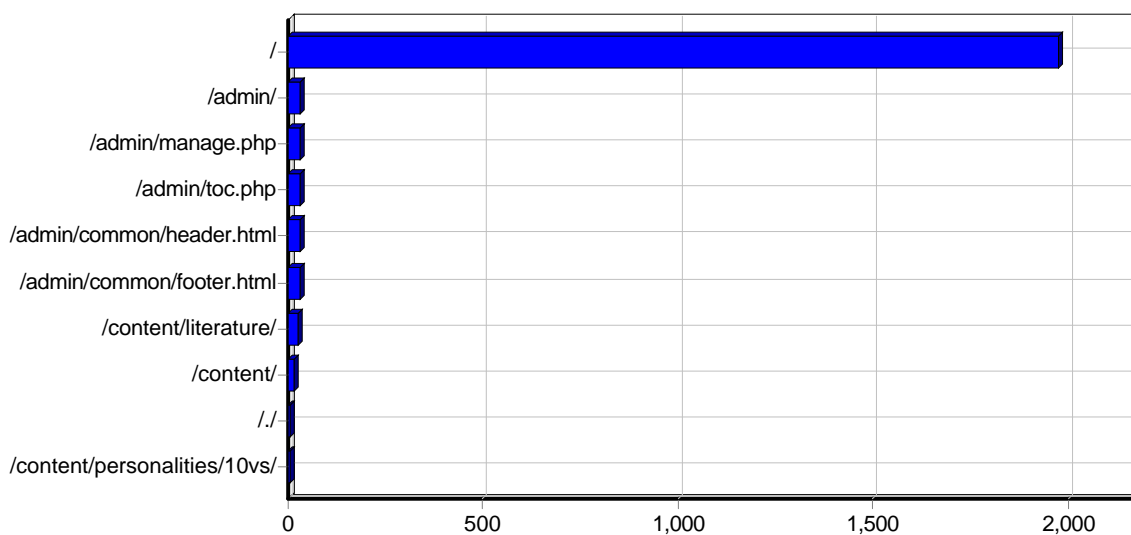
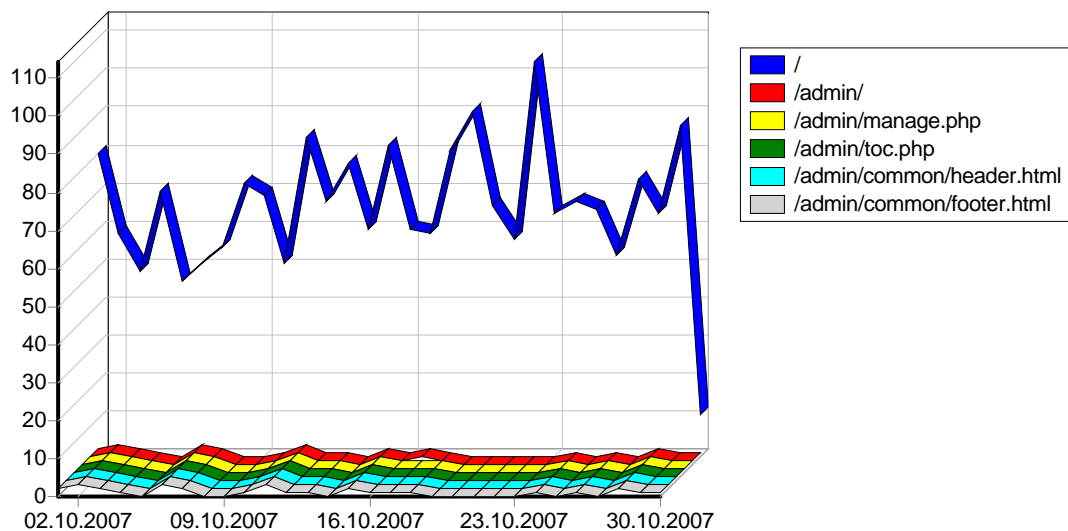
					()
01.10.2007	1,069	304	109	01:46	14,671
02.10.2007	756	371	90	07:01	9,623
03.10.2007	844	519	71	12:49	13,328
04.10.2007	1,007	477	90	04:40	18,858
05.10.2007	653	97	76	05:30	9,676
06.10.2007	1,733	807	72	06:43	23,872
07.10.2007	1,391	335	112	01:36	29,849
08.10.2007	573	180	107	01:20	5,539
09.10.2007	654	176	94	02:16	8,793
10.10.2007	745	368	80	06:58	13,076
11.10.2007	2,453	440	111	03:33	42,027
12.10.2007	1,339	704	115	07:04	21,323
13.10.2007	886	592	96	08:13	14,211
14.10.2007	809	400	96	03:48	10,501
15.10.2007	523	200	117	01:25	7,296
16.10.2007	739	249	92	03:39	12,593
17.10.2007	1,293	384	75	13:31	19,084
18.10.2007	893	348	105	10:58	12,452
19.10.2007	2,084	564	143	05:58	25,924
20.10.2007	1,143	386	93	05:50	13,186
21.10.2007	1,412	392	91	03:41	20,153
22.10.2007	1,373	400	143	04:10	16,990
23.10.2007	479	139	109	01:17	8,642
24.10.2007	1,251	201	105	04:34	21,893
25.10.2007	274	102	102	39	4,591
26.10.2007	1,042	147	113	08:39	14,340
27.10.2007	1,055	177	123	06:58	9,240
28.10.2007	1,494	409	108	08:19	24,627
29.10.2007	3,165	910	128	06:02	49,806
30.10.2007	360	48	35	01:53	5,226
	33,492	10,826	3,001	05:15	501,403



			()
00:00 - 00:59	689	140	10,657
01:00 - 01:59	949	147	14,030
02:00 - 02:59	1,645	82	29,033
03:00 - 03:59	1,121	94	14,395
04:00 - 04:59	1,052	125	16,404
05:00 - 05:59	1,454	84	14,828
06:00 - 06:59	1,793	104	32,866
07:00 - 07:59	1,194	127	15,238
08:00 - 08:59	1,777	119	22,953
09:00 - 09:59	1,687	87	24,594
10:00 - 10:59	565	131	8,151
11:00 - 11:59	727	145	12,283
12:00 - 12:59	1,023	147	15,096
13:00 - 13:59	774	141	11,185
14:00 - 14:59	1,157	131	22,178
15:00 - 15:59	1,607	146	23,744
16:00 - 16:59	2,819	141	43,622
17:00 - 17:59	1,382	141	19,893
18:00 - 18:59	1,703	137	22,597
19:00 - 19:59	1,908	124	32,761
20:00 - 20:59	2,730	135	38,700
21:00 - 21:59	1,935	122	25,455
22:00 - 22:59	654	113	9,564
23:00 - 23:59	1,147	138	21,164
	33,492	3,001	501,403

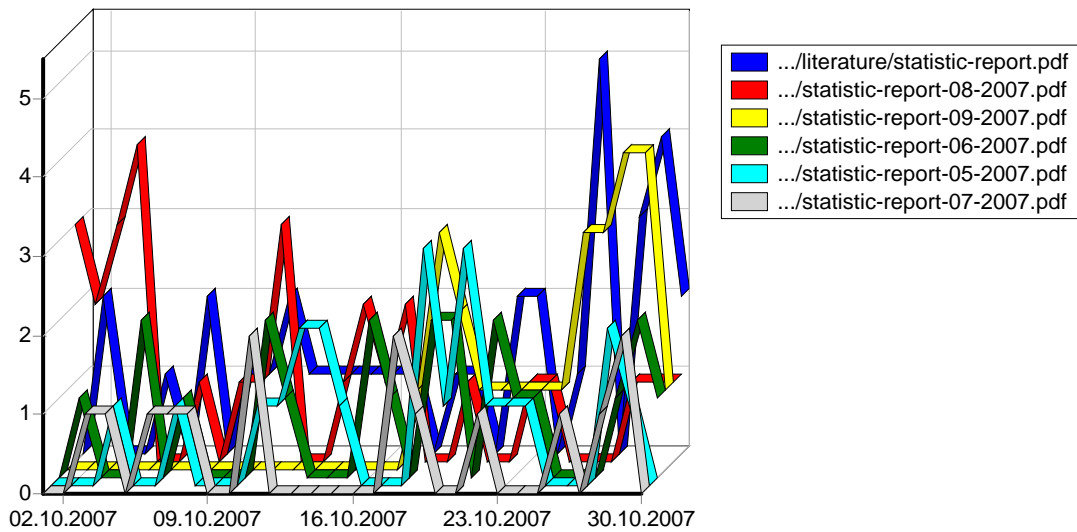


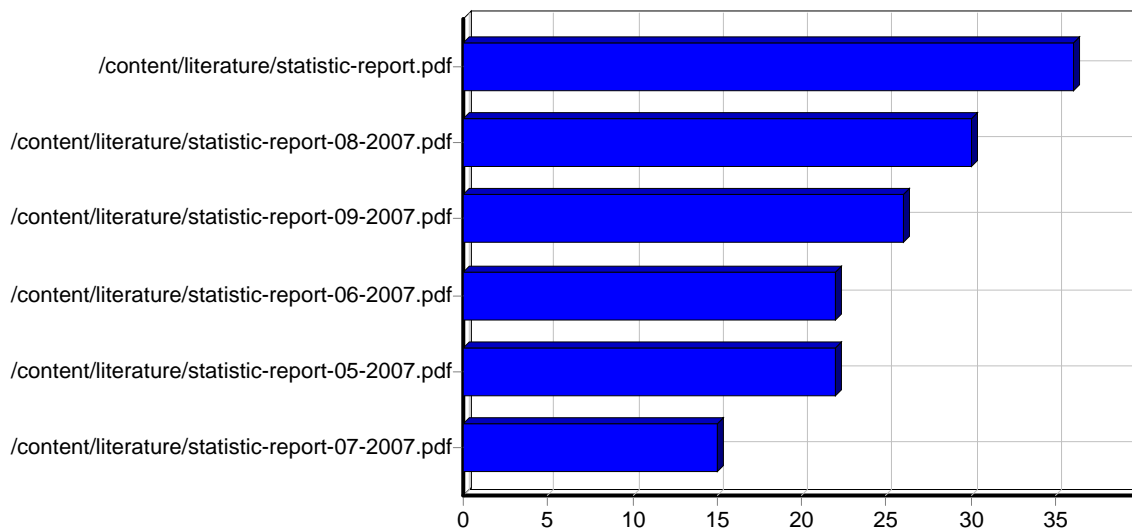
			()
	5,106	407	85,132
	6,703	604	94,304
	2,988	420	44,878
	4,133	331	67,382
	4,627	408	77,929
	5,118	447	71,264
	4,817	384	60,511
	33,492	3,001	501,403



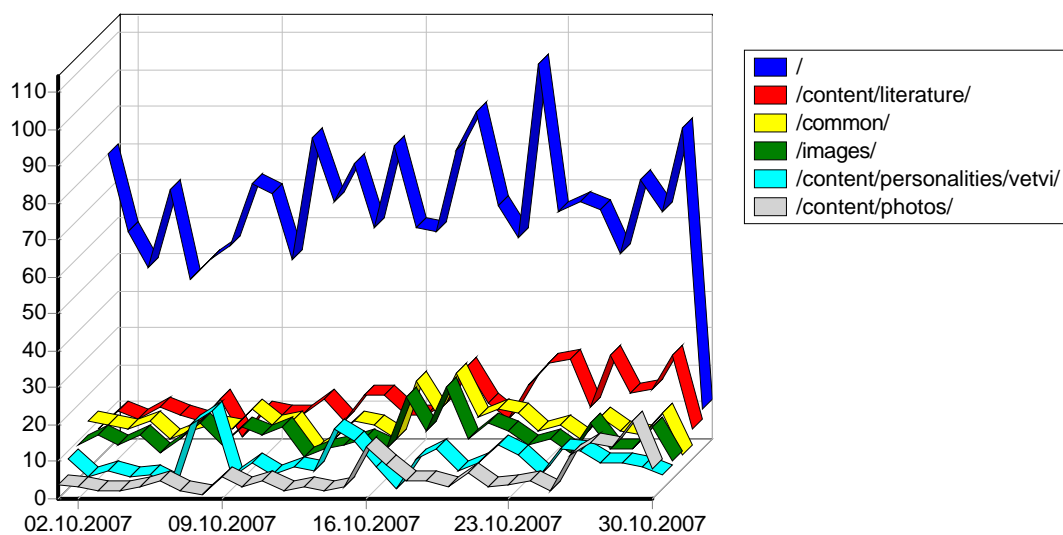
					()
1	http://www.epov.ru/	10,365	0	1,974	135,988
2	http://www.epov.ru/admin/	57	0	31	24
3	http://www.epov.ru/admin/manage.php	94	0	30	8,271
4	http://www.epov.ru/admin/toc.php	33	0	30	35
5	http://www.epov.ru/admin/common/header.html	31	0	30	2
6	http://www.epov.ru/admin/common/footer.html	31	0	30	3
7	http://www.epov.ru/content/literature/	26	0	26	0
8	http://www.epov.ru/content/	40	0	13	12
9	http://www.epov.ru/./	6	0	6	61
10	http://www.epov.ru/content/personalities/10vs/	5	0	5	0
11	http://www.epov.ru/content/personalities/vetvi/	3	0	3	0
12	http://www.epov.ru/content/personalities/0/	3	0	3	0
13	http://www.epov.ru/content/personalities/7ss/	2	0	2	0

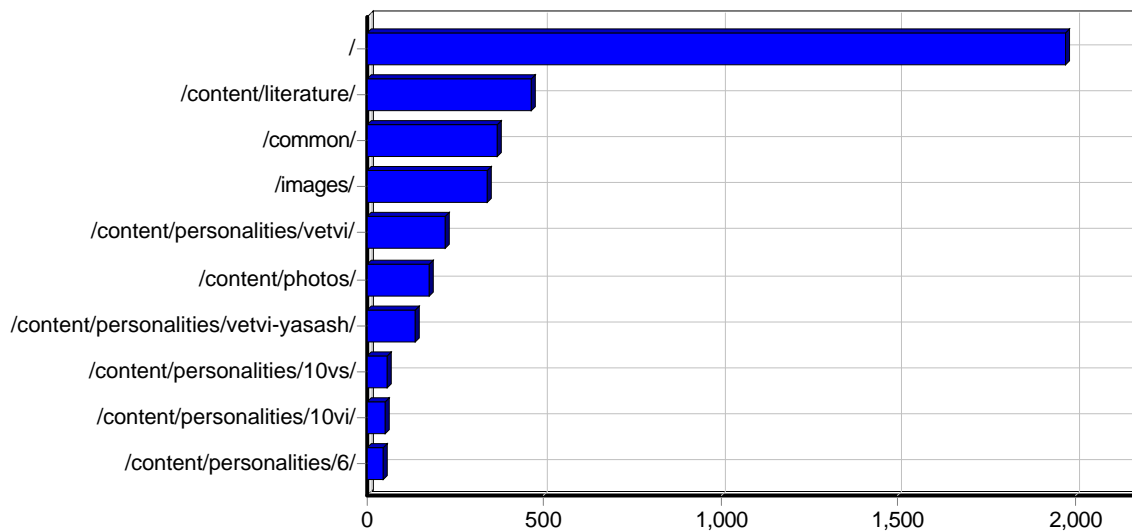
14	http://www.epov.ruhttp://www.epov.ru/	2	0	2	218
15	http://www.epov.ru/content/personalities/9vm/	1	0	1	0
16	http://www.epov.ru/content/personalities/9vi/	1	0	1	0
17	http://www.epov.ru/content/personalities/8vs/	1	0	1	0
18	http://www.epov.ru/content/personalities/9sn/	1	0	1	0
19	http://www.epov.ru/content/personalities/9vs/	1	0	1	0
20	http://www.epov.ru/content/personalities/vetvi-yasash/	1	0	1	0
21	http://www.epov.ru/content/personalities/9vn/	1	0	1	0
22	http://www.epov.ru/content/personalities/9vp/	1	0	1	0
23	http://www.epov.ru/content/personalities/7sm/	1	0	1	0
24	http://www.epov.ru/content/personalities/7sn/	1	0	1	0
25	http://www.epov.ru/content/personalities/7/	1	0	1	0
26	http://www.epov.ru/content/personalities/10sn/	1	0	1	0
27	http://www.epov.ru/content/personalities/10vm/	1	0	1	0
28	http://www.epov.ru/content/personalities/8vn/	1	0	1	0
29	http://www.epov.ru/content/personalities/8vp/	1	0	1	0
30	http://www.epov.ru/content/personalities/8vm/	1	0	1	0
31	http://www.epov.ru/content/personalities/8sn/	1	0	1	0
32	http://www.epov.ru/content/personalities/8vi/	1	0	1	0
		10,716	0	-	144,619





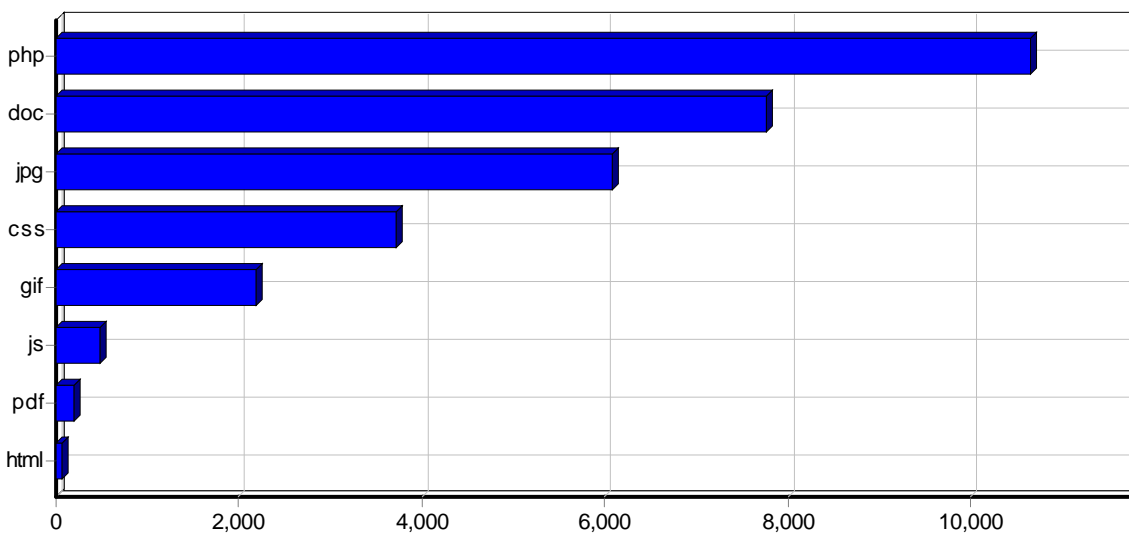
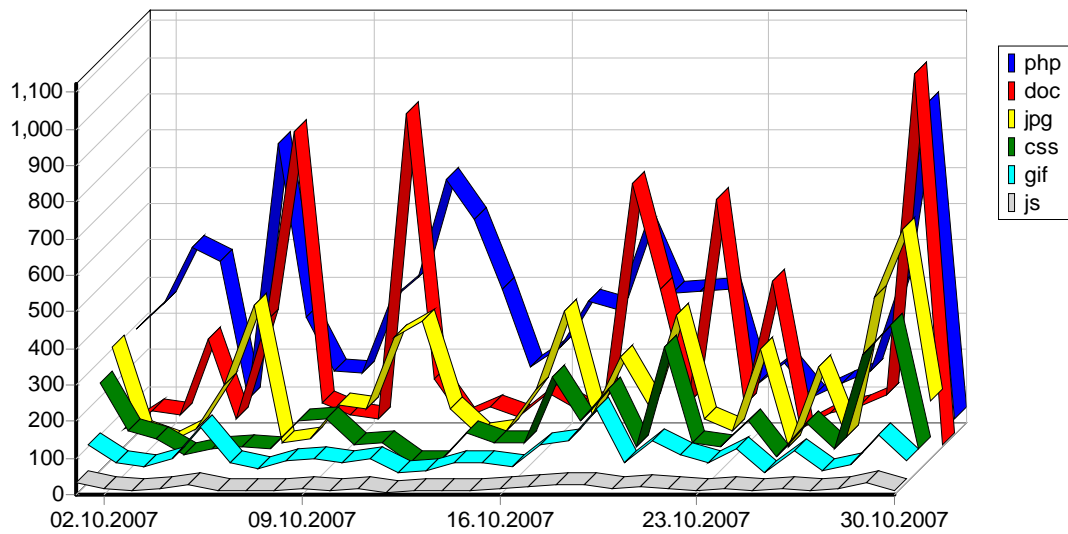
					()
1	http://www.epov.ru/content/literature/statistic-report.pdf	54	14	36	6,815
2	http://www.epov.ru/content/literature/statistic-report-08-2007.pdf	35	4	30	3,402
3	http://www.epov.ru/content/literature/statistic-report-09-2007.pdf	40	9	26	4,037
4	http://www.epov.ru/content/literature/statistic-report-06-2007.pdf	28	1	22	1,456
5	http://www.epov.ru/content/literature/statistic-report-05-2007.pdf	22	0	22	1,556
6	http://www.epov.ru/content/literature/statistic-report-07-2007.pdf	15	0	15	1,225
		194	28	-	18,494





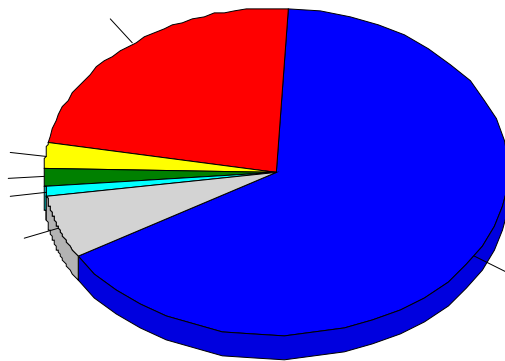
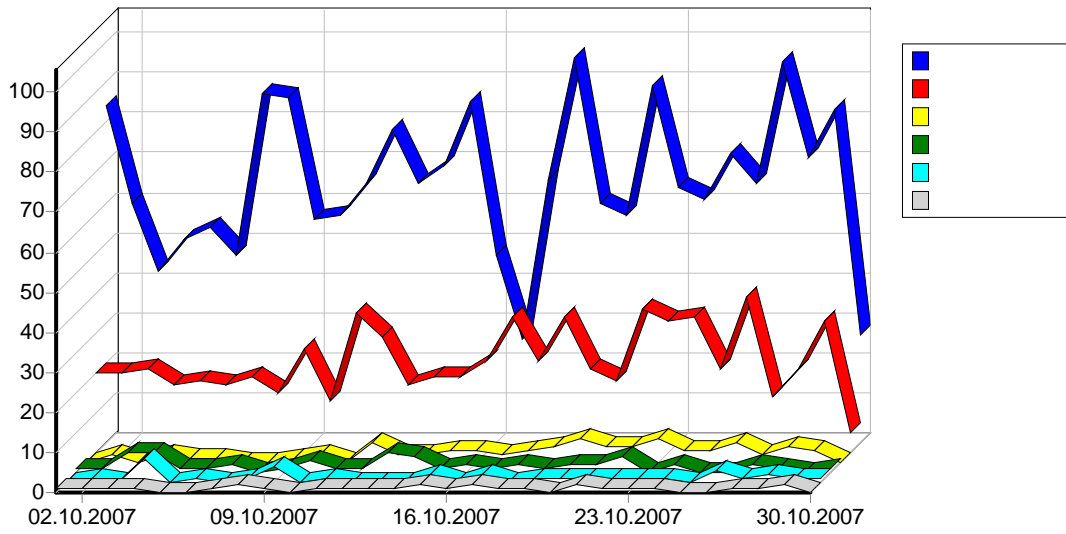
					()
1	http://www.epov.ru/	10,365	0	1,974	135,988
2	http://www.epov.ru/content/literature/	1,363	45	465	88,242
3	http://www.epov.ru/common/	4,014	0	369	7,226
4	http://www.epov.ru/images/	3,726	2	342	20,914
5	http://www.epov.ru/content/personalities/vetvi/	661	11	223	12,333
6	http://www.epov.ru/content/photos/	3,864	9	173	116,215
7	http://www.epov.ru/content/personalities/vetvi-yasash/	351	5	137	6,039
8	http://www.epov.ru/content/personalities/10vs/	1,146	0	56	17,870
9	http://www.epov.ru/content/personalities/10vi/	721	0	49	12,452
10	http://www.epov.ru/content/personalities/6/	121	0	46	1,484
11	http://www.epov.ru/content/maps/	210	1	43	13,695
12	http://www.epov.ru/content/personalities/10vp/	488	0	42	7,590
13	http://www.epov.ru/content/personalities/9vi/	375	0	41	5,940
14	http://www.epov.ru/content/personalities/10vn/	504	0	39	7,591
15	http://www.epov.ru/admin/	184	0	31	8,331
16	http://www.epov.ru/content/personalities/9vs/	323	0	31	4,319
17	http://www.epov.ru/admin/common/	238	0	31	75
18	http://www.epov.ru/content/personalities/10sn/	411	0	28	5,414
19	http://www.epov.ru/content/personalities/5/	94	0	26	1,024
20	http://www.epov.ru/content/personalities/9sn/	219	0	22	2,720
21	http://www.epov.ru/content/personalities/3/	67	0	21	801
22	http://www.epov.ru/content/personalities/9vp/	179	0	21	2,331
23	http://www.epov.ru/content/personalities/9vn/	260	0	20	3,085
24	http://www.epov.ru/content/personalities/10vm/	170	0	18	2,149
25	http://www.epov.ru/content/personalities/8sn/	89	0	17	1,245
26	http://www.epov.ru/content/personalities/7ss/	56	0	17	588
27	http://www.epov.ru/content/personalities/7/	111	0	17	1,281
28	http://www.epov.ru/content/personalities/8vs/	62	0	16	729
29	http://www.epov.ru/content/personalities/7sm/	52	0	16	565
30	http://www.epov.ru/content/personalities/4/	98	0	15	1,033
31	http://www.epov.ru/content/personalities/8vn/	88	0	14	1,081
32	http://www.epov.ru/content/personalities/8vi/	53	0	14	638
33	http://www.epov.ru/content/personalities/7sn/	62	0	14	643
34	http://www.epov.ru/content/	40	0	13	12

35	http://www.epov.ru/content/personalities/0/	18	0	12	164
36	http://www.epov.ru/content/personalities/8vp/	37	0	11	450
37	http://www.epov.ru/admin/images/	11	0	11	0
38	http://www.epov.ru/content/personalities/2/	19	0	10	238
39	http://www.epov.ru/content/personalities/9vm/	21	0	10	243
40	http://www.epov.ru/content/personalities/1/	9	0	9	100
41	http://www.epov.ru/content/personalities/8vm/	10	0	8	100
42	http://www.epov.ru/content/broshura/	229	0	8	7,457
43	http://www.epov.ru/./	6	0	6	61
44	http://www.epov.ruhttp://www.epov.ru/	2	0	2	218
45	http://www.epov.ru//content/personalities/vetvi/	1	0	1	26
		31,128	73	-	500,714



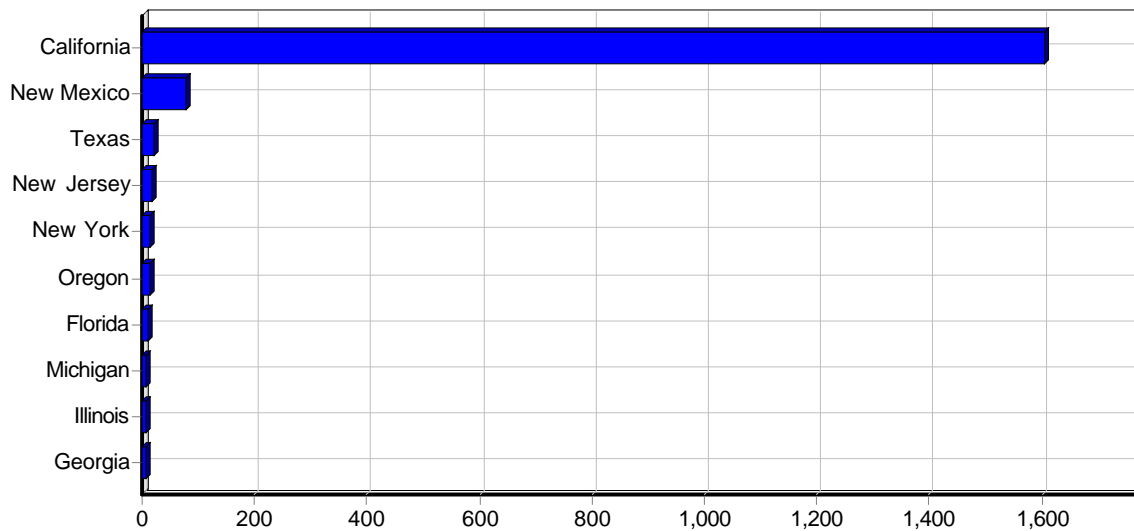
				()
1	php	10,654	0	144,613
2	doc	7,763	33	164,578

3	jpg	6,086	12	165,138
4	css	3,708	0	6,744
5	gif	2,179	0	587
6	js	482	0	551
7	pdf	194	28	18,494
8	html	62	0	6
		31,128	73	500,714



				%	()
1		4,936	1,966	65.51%	86,911
2		20,590	694	23.13%	290,848
3		472	73	2.43%	8,677
4		2,870	52	1.73%	50,989
5		709	32	1.07%	12,809
6		2,509	28	0.93%	28,061
7		22	22	0.73%	248
8		24	16	0.53%	412
9		13	13	0.43%	71
10		257	13	0.43%	3,723
11		63	12	0.40%	759
12		185	8	0.27%	2,413
13		18	6	0.20%	144
14		30	5	0.17%	525

15		134	5	0.17%	3,151
16		168	4	0.13%	3,667
17		4	4	0.13%	22
18		18	4	0.13%	346
19		4	4	0.13%	130
20		3	3	0.10%	16
21		6	3	0.10%	48
22		2	2	0.07%	11
23		2	2	0.07%	5
24		28	2	0.07%	163
25		28	2	0.07%	442
26		2	2	0.07%	11
27		214	2	0.07%	2,682
28		1	1	0.03%	17
29		1	1	0.03%	5
30		1	1	0.03%	5
31		1	1	0.03%	5
32		13	1	0.03%	191
33		1	1	0.03%	5
34		1	1	0.03%	5
35		1	1	0.03%	5
36		1	1	0.03%	5
37		1	1	0.03%	5
38		4	1	0.03%	346
39		2	1	0.03%	322
40		1	1	0.03%	5
41		1	1	0.03%	5
42		38	1	0.03%	553
43		13	1	0.03%	185
44		1	1	0.03%	5
45		1	1	0.03%	5
46		1	1	0.03%	5
47		81	1	0.03%	2,324
48	-	1	1	0.03%	5
49		15	1	0.03%	87
		33,492	3,001	100.00%	501,403

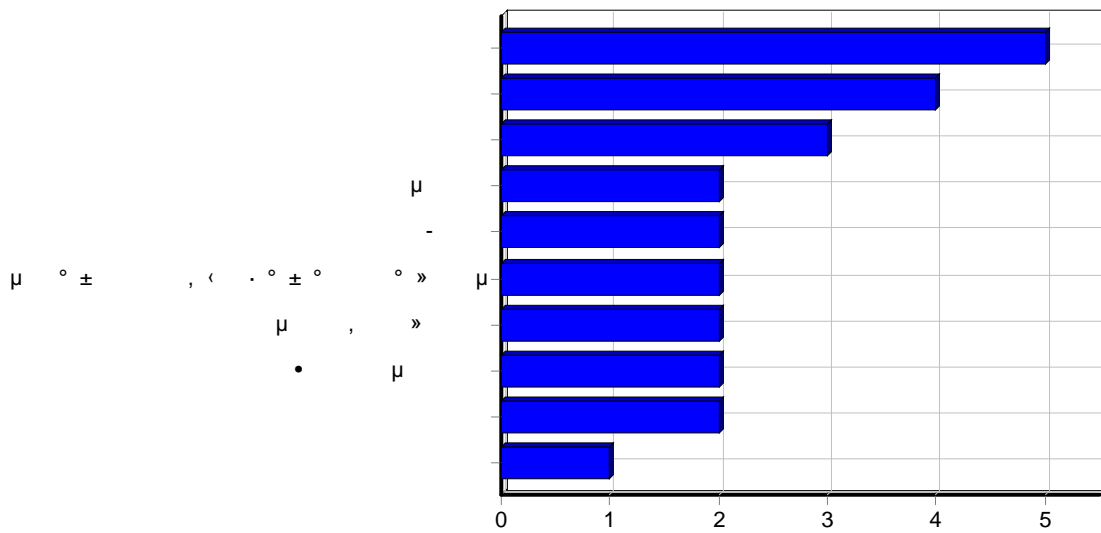
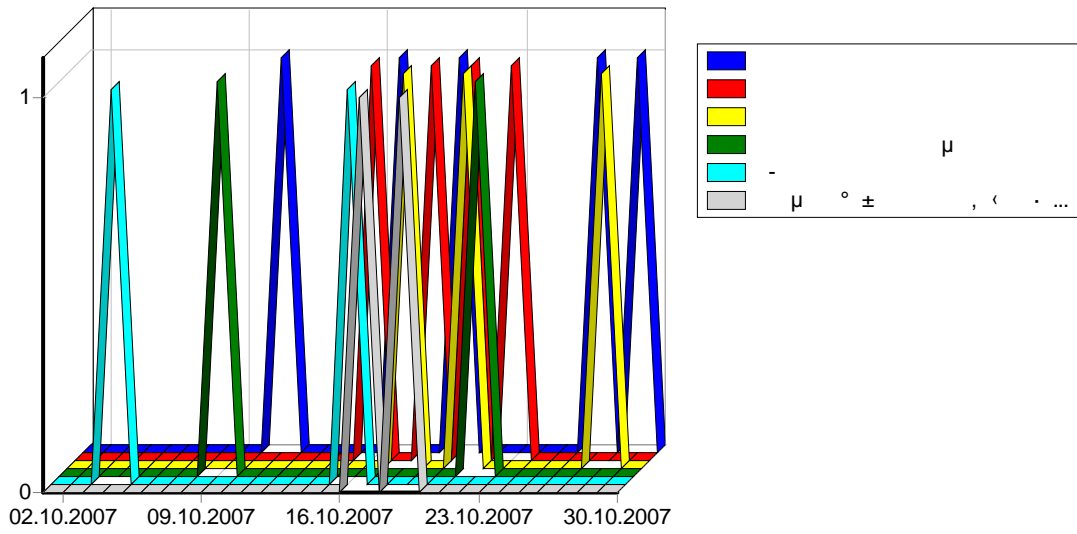


				()
1	California	2,622	1,605	50,979
2	New Mexico	84	80	1,306
3	Texas	1,322	20	21,235
4	New Jersey	17	17	11
5	New York	17	14	107
6	Oregon	32	14	473
7	Florida	13	10	486
8	Michigan	8	8	44
9	Illinois	9	7	173
10	Georgia	79	7	1,172
11	Indiana	6	6	33
12	Virginia	6	5	33
13	District of Columbia	18	5	179
14	Ohio	5	5	27
15	Tennessee	4	4	22
16	Missouri	4	4	22
17	Connecticut	4	4	22
18	Massachusetts	4	4	22
19	Montana	3	3	16
20	Colorado	3	3	16
21	South Carolina	2	2	11
22	Pennsylvania	5	2	237
23	Washington	5	2	21
24	Wisconsin	2	2	11
25	Arkansas	2	2	11
26	Arizona	14	2	191
27	Oklahoma	2	2	37
28	Nebraska	2	2	11
29	Maryland	2	2	11
30	Minnesota	2	2	11
31	Nevada	1	1	5
32	Utah	1	1	5
33	Kansas	1	1	5

34	Delaware	1	1	5
35	Rhode Island	1	1	5
36	Louisiana	1	1	5
37	Kentucky	1	1	5
		4,305	1,852	76,981

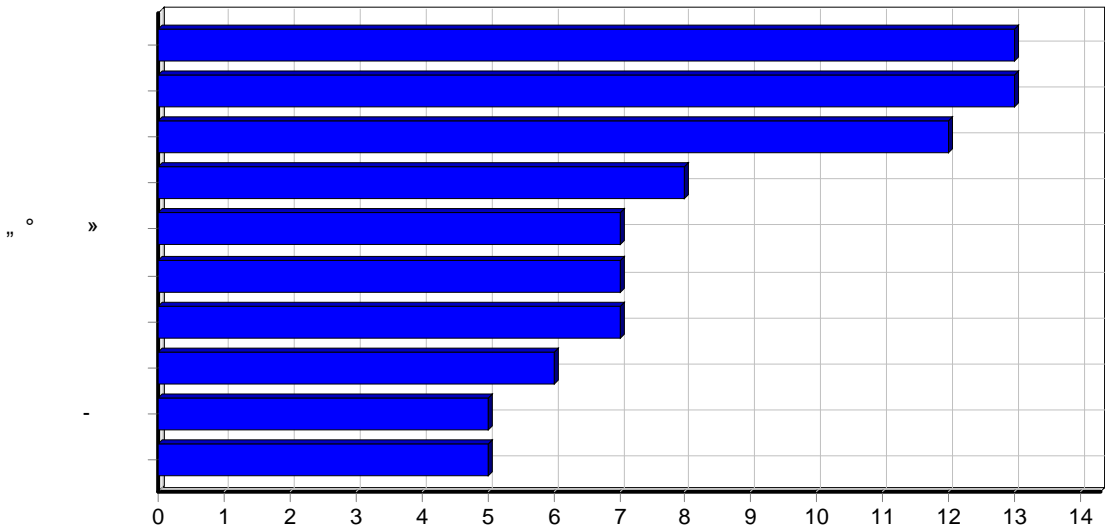
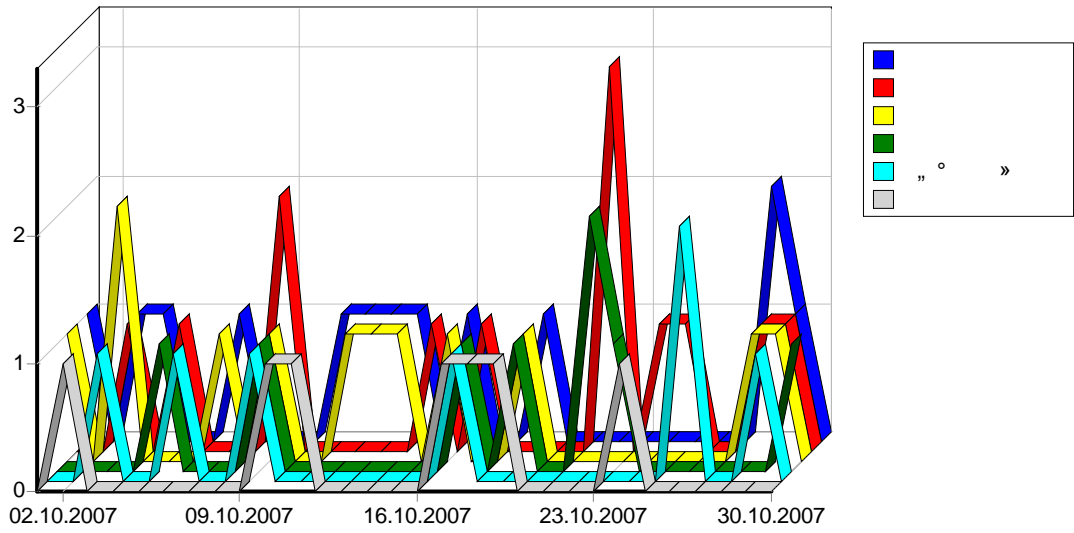
				()
1	Sunnyvale, California,	1,479	1,423	28,833
2	Moscow,	15,345	417	218,107
3	Mountain View, California,	1,106	170	21,728
4	Albuquerque, New Mexico,	84	80	1,306
5	Frankfurt Am Main,	52	50	712
6	Saint Petersburg,	1,116	45	11,494
7	Novosibirsk,	809	36	9,029
8	Chita,	607	27	8,158
9	Tokyo,	2,504	23	28,034
10	Kiev,	527	16	8,539
11	Sayreville, New Jersey,	15	15	0
12	Portland, Oregon,	30	12	462
13	Irkutsk,	102	11	1,601
14	Yekaterinburg,	104	10	1,298
15	Stockholm,	14	10	359
16	Almaty,	232	9	3,191
17	Khabarovsk,	85	8	1,800
18	Perm,	94	8	1,251
19	Penza,	120	7	1,961
20	Krasnoyarsk,	51	7	548
21	Tampa, Florida,	9	6	464
22	Kemerovo,	9	6	762
23	Leipzig,	6	6	47
24	Washington, District of Columbia,	18	5	179
25	San Antonio, Texas,	6	5	1
26	Vladivostok,	157	5	3,387
27	Oslo,	30	5	525
28	Ulan-Ude,	73	5	676
29	New York, New York,	7	4	5
30	Paris,	6	4	20
31	Chelyabinsk,	21	4	847
32	Chisinau,	18	4	346
33	Chicago, Illinois,	4	4	22
34	Rostov,	55	4	933
35	Sollentuna,	8	4	41
36	Amur,	87	4	2,236
37	Donetsk,	17	3	192
38	Novgorod,	43	3	597
39	Glendive, Montana,	3	3	16
40	Dallas, Texas,	1,290	3	20,886
41	Orlando, Florida,	3	3	16
42	Toronto,	3	3	16
43	Tomsk,	22	3	277

44	Gagarina,	13	3	409
45	Winnipeg,	3	3	16
46	West Haven, Connecticut,	3	3	16
47	Borzya,	59	3	1,206
48	Minsk,	113	3	2,919
49	Frisco, Texas,	3	3	116
50	Rivne,	80	3	2,421
		26,645	2,501	388,026
		29,595	2,775	435,055



1		5
2		4
3		3
4	μ	2
5	-	2
6	$\mu \text{ }^\circ \pm$, < . $\text{ }^\circ \pm \text{ }^\circ$ » μ	2
7	μ , »	2
8	• μ	2
9		2
10		1
11	1720	1
12		1
13		1
14		1

15		1
16	..	1
17		1
18		1
19		1
20	3	1
21		1
22	..	1
23		1
24	:	1
25		1
26		1
27	" "	1
28		1
29		1
30		1
31		1
32		1
33	1	1
34		1
35		1
36		1
37		1
38	... » ±	1
39	... ° ± , ° < μ „ , ° „ ... ° ± °	1
40	... ° ± °	1
41	‡ , ° . < ° μ , < ... < ... ° < ... ± € <	1
42	° μ	1
43		1
44	€ °	1
45	„ , ° „ . ± .	1
46	. ° . °	1
47	μ , μ μ ° » μ ° ‡	1
48	° ± ° μ , ° i •	1
49	. ° ° . ° ° ° » μ , μ	1
50	„ , 1916	1
		65
		280



1		13
2		13
3		12
4		8
5	„ ° »	7
6		7
7		7
8		6
9	-	5
10		5
11		5
12	,	4
13		4
14		4
15		4
16		3

17		3
18		3
19		3
20		3
21	± » ° ,	3
22		3
23	” μ ° ± , ‘	3
24		3
25	,	3
26	§ ,	3
27		3
28		3
29		3
30	. ° ± ° ° » μ	3
31	,	3
32		3
33	μ ° ± ,	3
34		3
35		3
36		3
37		3
38	• μ	2
39		2
40		2
41	3	2
42	.	2
43		2
44		2
45	“ μ μ ° » † μ μ	2
46	° . °	2
47		2
48	— ° ± ° ° » μ	2
49	” ° »	2
50		2
		196
		818