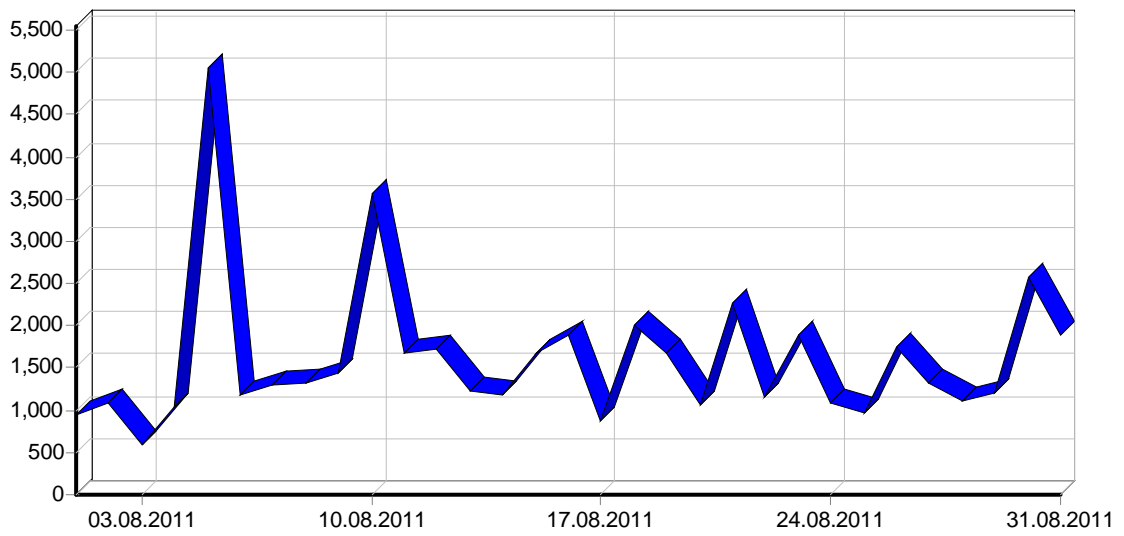
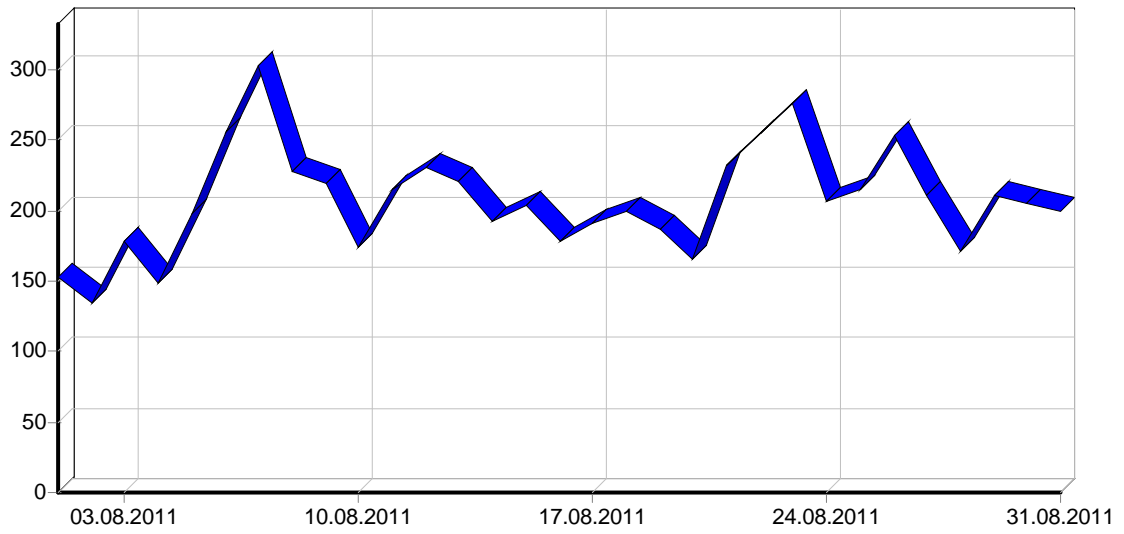
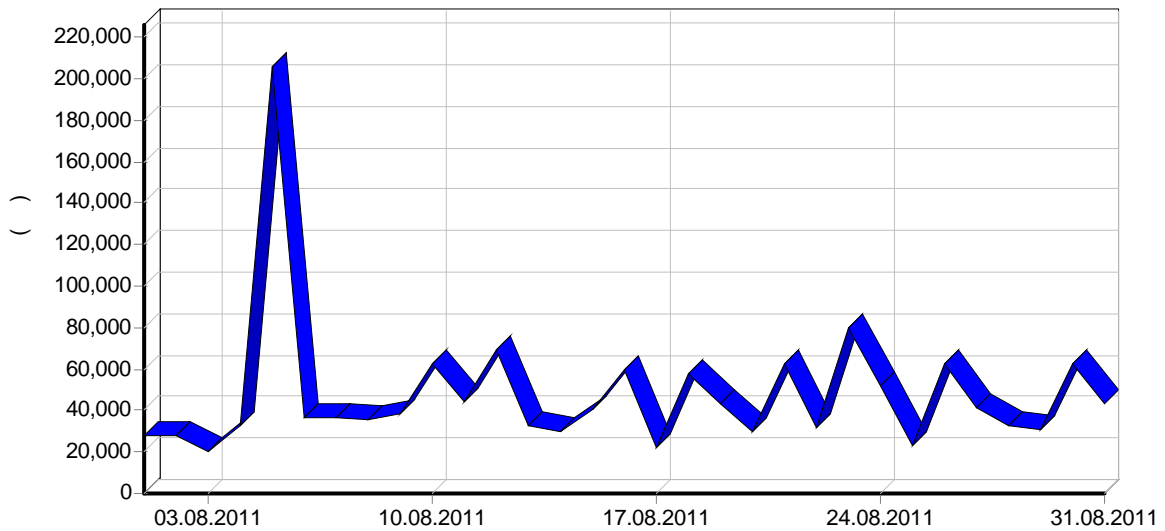
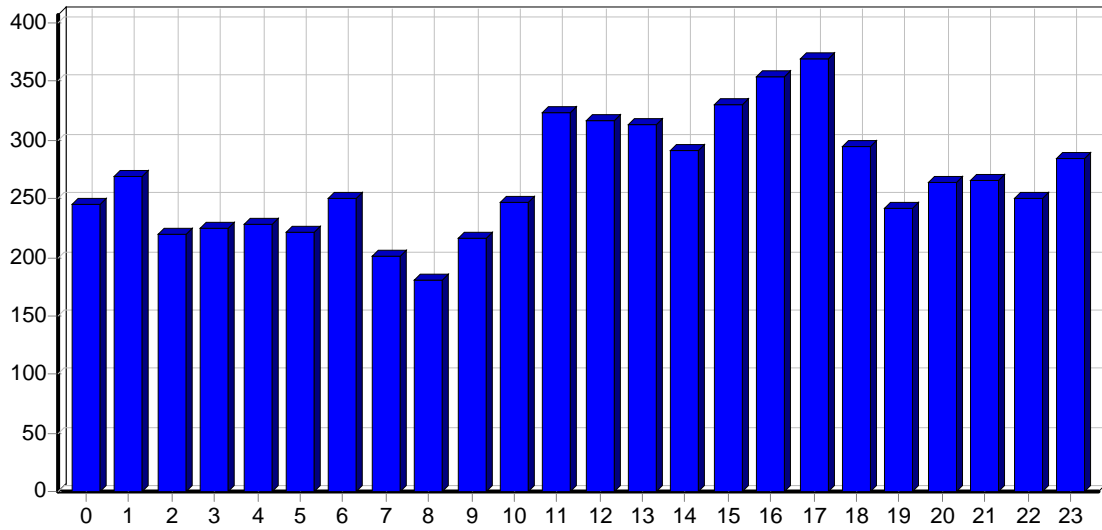


	49,776
	1,605
	7.77
	4,133
	2,825
	16,429
	529
	2.57
	6,404
	206
IP-	2,802
	1.41
	46.46
	29.63
	230.27

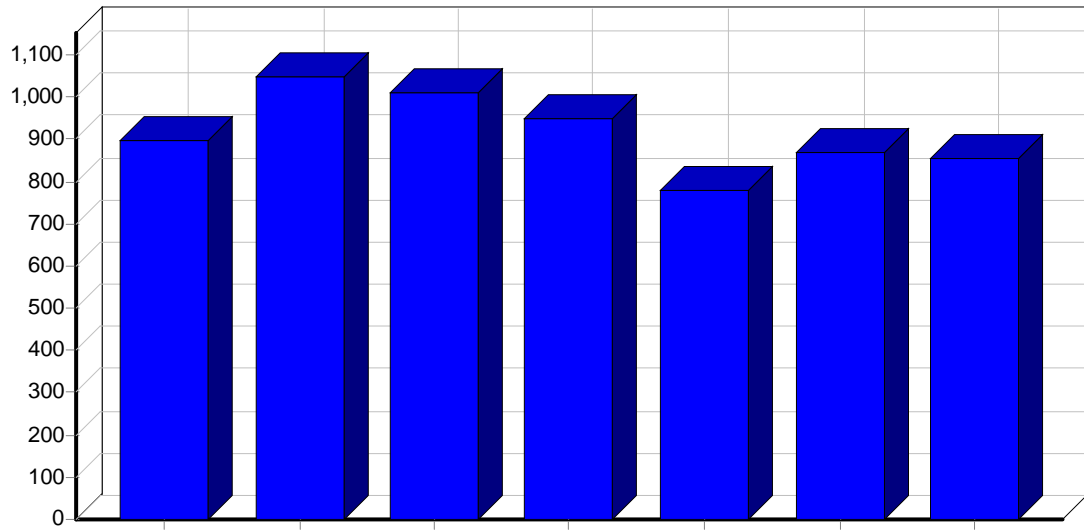




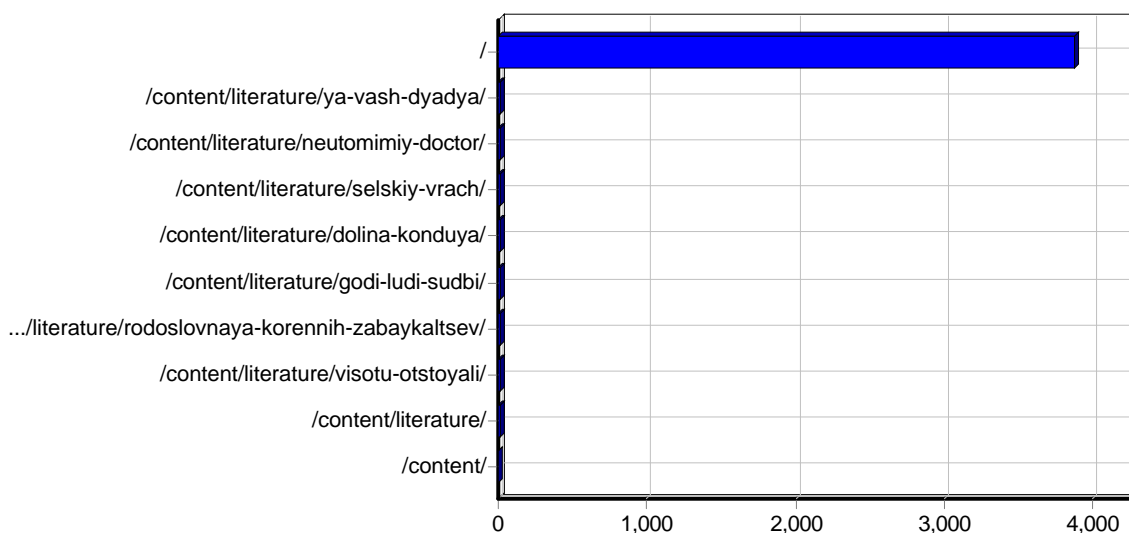
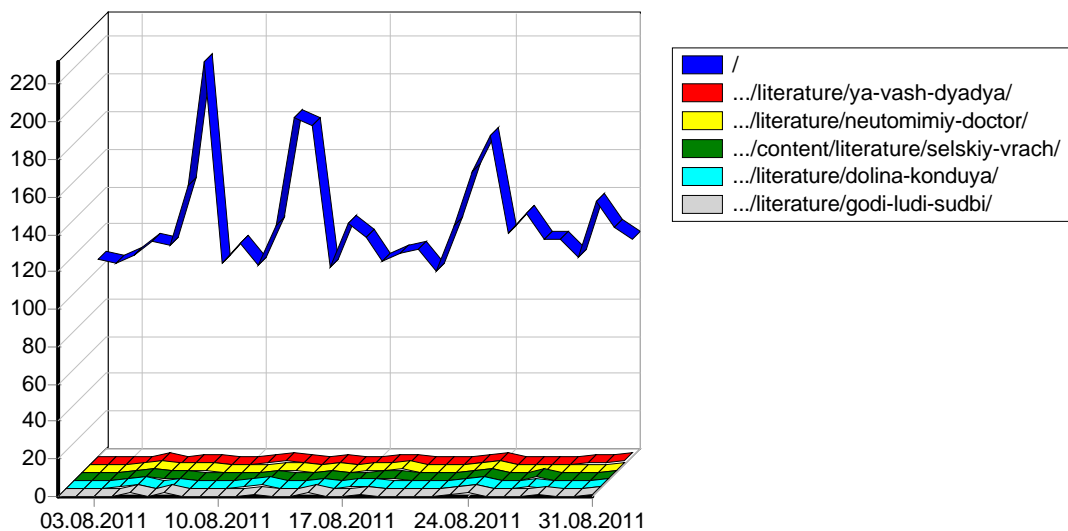
					()
01.08.2011	946	340	152	06:53	28,348
02.08.2011	1,096	334	135	20:25	27,968
03.08.2011	598	180	178	04:22	19,753
04.08.2011	1,046	403	149	19:39	33,088
05.08.2011	5,042	2,191	198	03:01	205,452
06.08.2011	1,183	282	256	06:40	36,676
07.08.2011	1,299	387	302	02:42	36,118
08.08.2011	1,319	360	227	23:07	35,622
09.08.2011	1,448	280	219	19:08	38,633
10.08.2011	3,573	2,189	174	08:29	62,268
11.08.2011	1,671	397	215	03:29	43,770
12.08.2011	1,725	619	230	06:21	69,196
13.08.2011	1,226	372	220	13:15	32,869
14.08.2011	1,188	272	192	04:30	30,200
15.08.2011	1,677	271	203	03:39	40,854
16.08.2011	1,899	640	178	04:28	59,306
17.08.2011	863	247	191	09:48	22,423
18.08.2011	1,998	620	200	04:06	57,546
19.08.2011	1,681	360	187	08:47	43,262
20.08.2011	1,070	245	166	10:25	30,263
21.08.2011	2,263	351	232	09:36	62,777
22.08.2011	1,167	250	254	04:01	31,651
23.08.2011	1,896	610	275	01:37	79,529
24.08.2011	1,097	430	206	47	51,871
25.08.2011	965	260	215	04:48	22,767
26.08.2011	1,751	750	253	09:45	62,937
27.08.2011	1,314	283	211	04:11	41,230
28.08.2011	1,120	255	171	08:00	32,258
29.08.2011	1,195	353	211	18:08	30,390
30.08.2011	2,579	1,029	205	08:06	62,437
31.08.2011	1,881	869	199	06:57	43,201
	49,776	16,429	6,404	08:03	1,474,677



			()
00:00 - 00:59	2,051	246	58,248
01:00 - 01:59	2,260	269	80,168
02:00 - 02:59	993	220	36,676
03:00 - 03:59	1,395	225	43,354
04:00 - 04:59	1,497	228	57,586
05:00 - 05:59	2,358	221	62,994
06:00 - 06:59	1,373	251	53,214
07:00 - 07:59	1,052	201	30,809
08:00 - 08:59	1,767	180	40,967
09:00 - 09:59	2,079	217	80,926
10:00 - 10:59	1,501	247	28,324
11:00 - 11:59	2,352	323	53,111
12:00 - 12:59	2,541	316	66,212
13:00 - 13:59	1,820	313	44,481
14:00 - 14:59	2,319	291	46,937
15:00 - 15:59	2,254	331	69,068
16:00 - 16:59	2,748	354	78,174
17:00 - 17:59	2,291	370	96,866
18:00 - 18:59	3,800	295	128,702
19:00 - 19:59	3,080	242	106,591
20:00 - 20:59	2,664	264	61,618
21:00 - 21:59	1,876	266	50,943
22:00 - 22:59	1,697	250	43,873
23:00 - 23:59	2,008	284	54,825
	49,776	6,404	1,474,677

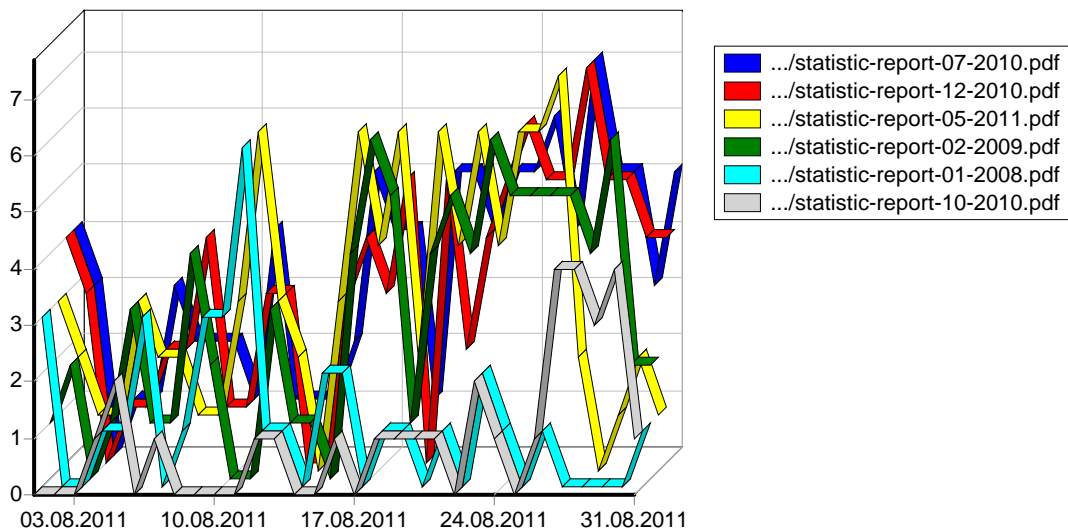


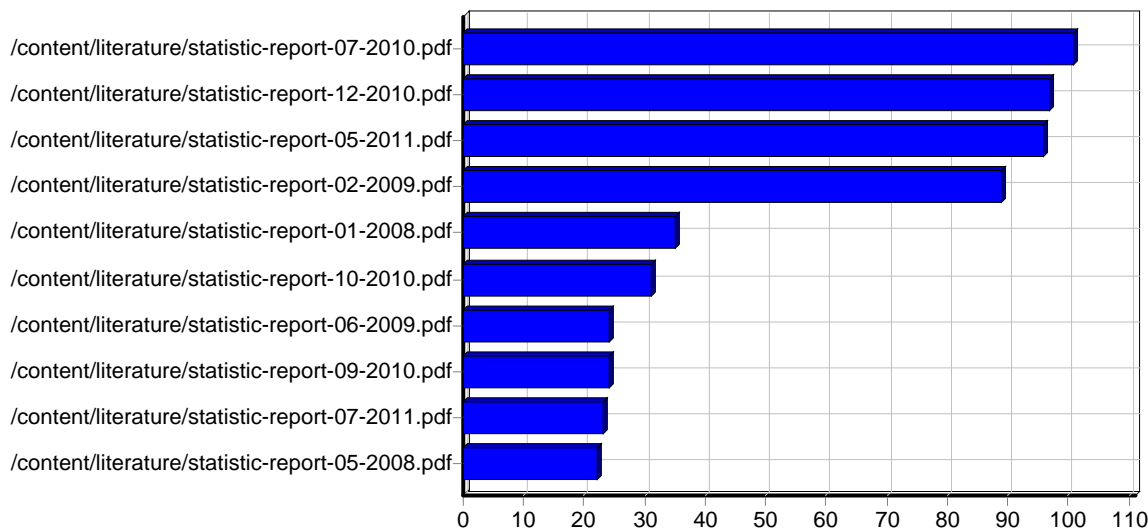
			()
	5,870	897	161,354
	6,304	1,047	166,868
	8,918	1,012	267,874
	8,012	948	199,519
	5,680	779	157,172
	10,199	868	380,848
	4,793	853	141,039
	49,776	6,404	1,474,677



					()
1	http://www.epov.ru/	15,522	0	3,876	501,742
2	http://www.epov.ru/content/literature/ya-vash-dyadya/	18	0	18	376
3	http://www.epov.ru/content/literature/neutomimiy-doctor/	17	0	17	537
4	http://www.epov.ru/content/literature/selskiy-vrach/	15	0	15	371
5	http://www.epov.ru/content/literature/dolina-konduya/	16	0	15	495
6	http://www.epov.ru/content/literature/godi-ludi-sudbi/	13	0	13	270
7	http://www.epov.ru/content/literature/rodoslovnaya-korennih-zabaykaltsev/	12	0	12	297
8	http://www.epov.ru/content/literature/visotu-otstoyali/	11	0	11	319
9	http://www.epov.ru/content/literature/	13	0	9	0
10	http://www.epov.ru/content/	13	0	4	3
11	http://www.epov.ru/admin/common/header.html	3	0	3	0
12	http://www.epov.ru/admin/manage.php	10	0	3	3,976
13	http://www.epov.ru/admin/toc.php	3	0	3	3

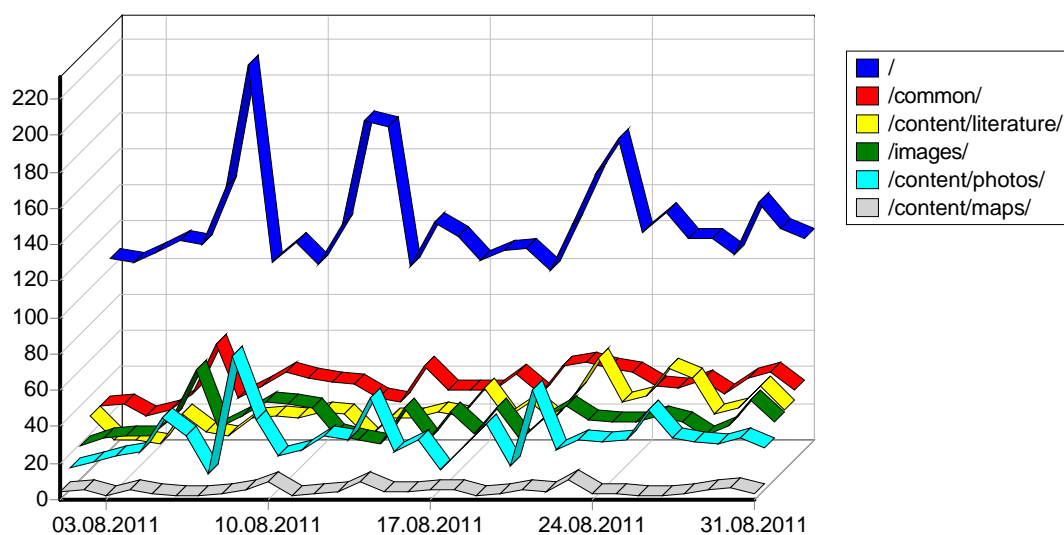
14	http://www.epov.ruhttp://www.epov.ru/	5	0	3	990
15	http://www.epov.ru/admin/	4	0	3	1
16	http://www.epov.ru/admin/common/footer.html	3	0	3	0
17	http://www.epov.ru//	3	0	2	26
18	http://www.epov.ru/./	203	0	2	2,195
19	http://www.epov.ru/content/personalities/0/	1	0	1	0
20	http://www.epov.ru/content/personalities/10vi/	1	0	1	0
21	http://www.epov.ru/content/personalities/10sn/	1	0	1	0
22	http://www.epov.ru/content/personalities/10vs/	1	0	1	0
23	http://www.epov.ru/content/personalities/vetvi/	5	0	1	0
24	http://www.epov.ru/index.php/	1	0	1	10
25	http://www.epov.ru/content/personalities/8sm/	1	0	1	0
26	http://www.epov.ru/content/personalities/8vi/	1	0	1	0
27	http://www.epov.ru/////	2	0	1	18
28	http://www.epov.ru////	2	0	1	15
29	http://www.epov.ru/////	2	0	1	15
30	http://www.epov.ru/////	2	0	1	18
31	http://www.epov.ru///	2	0	1	18
32	http://www.epov.ru/../	269	0	1	3,319
33	http://www.epov.ru/content/personalities/	1	0	1	0
34	http://www.epov.ru/././/	1	0	1	10
35	http://www.epov.ru/.//	23	0	1	294
		16,200	0	-	515,333

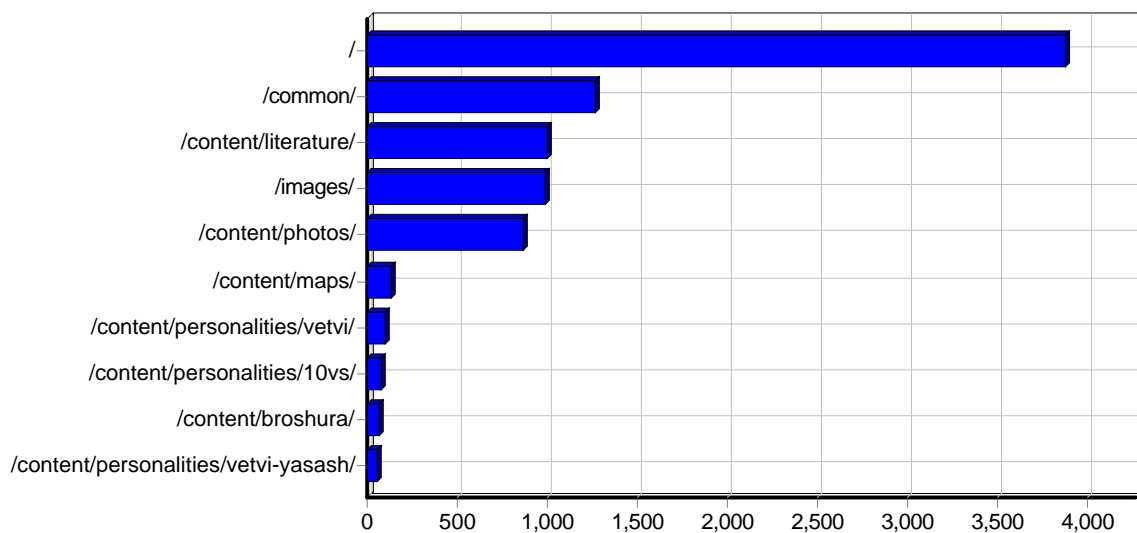




					()
1	http://www.epov.ru/content/literature/statistic-report-07-2010.pdf	105	2	101	13,255
2	http://www.epov.ru/content/literature/statistic-report-12-2010.pdf	98	0	97	13,070
3	http://www.epov.ru/content/literature/statistic-report-05-2011.pdf	97	0	96	11,468
4	http://www.epov.ru/content/literature/statistic-report-02-2009.pdf	91	0	89	9,561
5	http://www.epov.ru/content/literature/statistic-report-01-2008.pdf	35	0	35	5,680
6	http://www.epov.ru/content/literature/statistic-report-10-2010.pdf	31	0	31	4,380
7	http://www.epov.ru/content/literature/statistic-report-06-2009.pdf	24	0	24	3,599
8	http://www.epov.ru/content/literature/statistic-report-09-2010.pdf	25	0	24	3,440
9	http://www.epov.ru/content/literature/statistic-report-07-2011.pdf	29	6	23	3,280
10	http://www.epov.ru/content/literature/statistic-report-05-2008.pdf	22	0	22	3,610
11	http://www.epov.ru/content/literature/statistic-report-07-2009.pdf	22	0	22	3,197
12	http://www.epov.ru/content/literature/statistic-report-06-2011.pdf	28	8	20	3,268
13	http://www.epov.ru/content/literature/statistic-report-04-2009.pdf	19	0	19	2,629
14	http://www.epov.ru/content/literature/galkin-paper-japan.pdf	42	23	19	5,176
15	http://www.epov.ru/content/literature/statistic-report-10-2008.pdf	20	0	19	3,073
16	http://www.epov.ru/content/literature/statistic-report-05-2009.pdf	18	0	18	2,326
17	http://www.epov.ru/content/literature/statistic-report.pdf	20	0	18	3,376
18	http://www.epov.ru/content/literature/statistic-report-06-2008.pdf	18	0	18	2,769
19	http://www.epov.ru/content/literature/statistic-report-03-2009.pdf	17	0	17	2,610
20	http://www.epov.ru/content/literature/statistic-report-03-2008.pdf	16	0	16	2,743
21	http://www.epov.ru/content/literature/statistic-report-05-2010.pdf	16	0	16	2,398
22	http://www.epov.ru/content/literature/statistic-report-11-2008.pdf	16	0	16	2,454
23	http://www.epov.ru/content/literature/statistic-report-03-2010.pdf	16	0	16	2,532
24	http://www.epov.ru/content/literature/statistic-report-02-2011.pdf	16	0	16	2,220
25	http://www.epov.ru/content/literature/statistic-report-01-2009.pdf	16	1	15	2,367
26	http://www.epov.ru/content/literature/statistic-report-04-2011.pdf	18	2	15	2,534
27	http://www.epov.ru/content/literature/statistic-report-12-2008.pdf	15	0	15	2,443
28	http://www.epov.ru/content/literature/statistic-report-08-2009.pdf	15	0	15	2,157
29	http://www.epov.ru/content/literature/statistic-report-08-2008.pdf	15	0	15	2,078
30	http://www.epov.ru/content/literature/statistic-report-02-2008.pdf	14	0	14	2,297
31	http://www.epov.ru/content/literature/statistic-report-10-2009.pdf	14	0	14	1,860
32	http://www.epov.ru/content/literature/statistic-report-03-2011.pdf	14	0	14	1,837
33	http://www.epov.ru/content/literature/statistic-report-02-2010.pdf	13	0	13	2,096
34	http://www.epov.ru/content/literature/statistic-report-06-2010.pdf	13	0	12	2,127

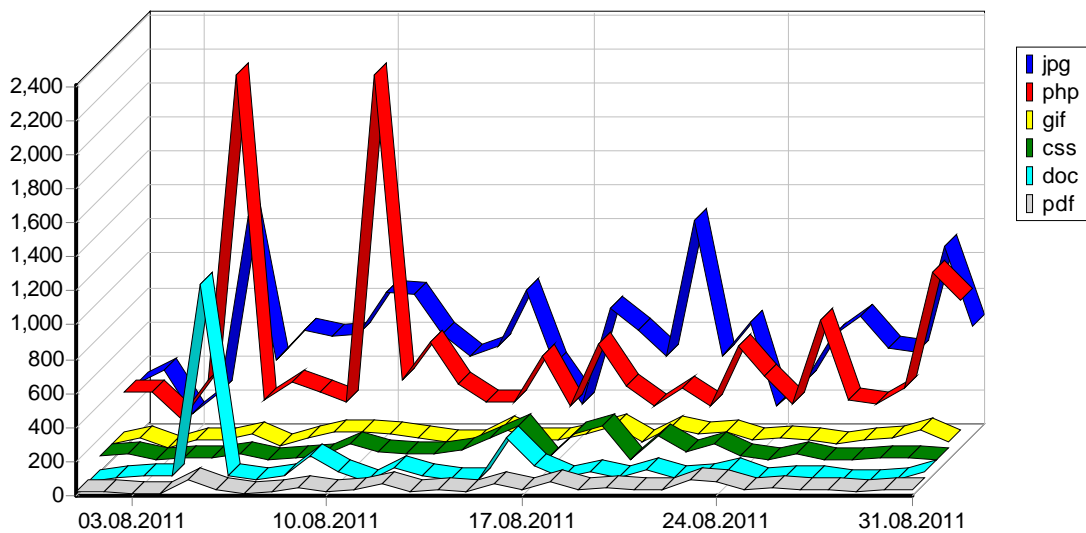
35	http://www.epov.ru/content/literature/statistic-report-07-2008.pdf	12	0	12	1,689
36	http://www.epov.ru/content/literature/statistic-report-08-2010.pdf	13	0	12	1,839
37	http://www.epov.ru/content/literature/statistic-report-04-2010.pdf	11	0	11	1,751
38	http://www.epov.ru/content/literature/statistic-report-08-2007.pdf	11	0	11	1,231
39	http://www.epov.ru/content/literature/statistic-report-11-2010.pdf	10	0	10	1,627
40	http://www.epov.ru/content/literature/statistic-report-09-2007.pdf	10	0	10	1,485
41	http://www.epov.ru/content/literature/statistic-report-09-2009.pdf	10	0	10	1,246
42	http://www.epov.ru/content/literature/statistic-report-01-2010.pdf	11	0	10	1,269
43	http://www.epov.ru/content/literature/mv-broshura.pdf	10	0	10	10,922
44	http://www.epov.ru/content/literature/statistic-report-01-2011.pdf	10	0	10	1,628
45	http://www.epov.ru/content/literature/statistic-report-12-2009.pdf	10	0	10	1,380
46	http://www.epov.ru/content/literature/statistic-report-07-2007.pdf	10	0	10	1,326
47	http://www.epov.ru/content/literature/statistic-report-05-2007.pdf	10	0	10	811
48	http://www.epov.ru/content/literature/statistic-report-09-2008.pdf	9	0	9	1,098
49	http://www.epov.ru/content/literature/statistic-report-10-2007.pdf	9	0	9	1,113
50	http://www.epov.ru/content/literature/statistic-report-06-2007.pdf	9	0	9	744
		1,153	42	-	165,093
		1,219	46	-	286,721

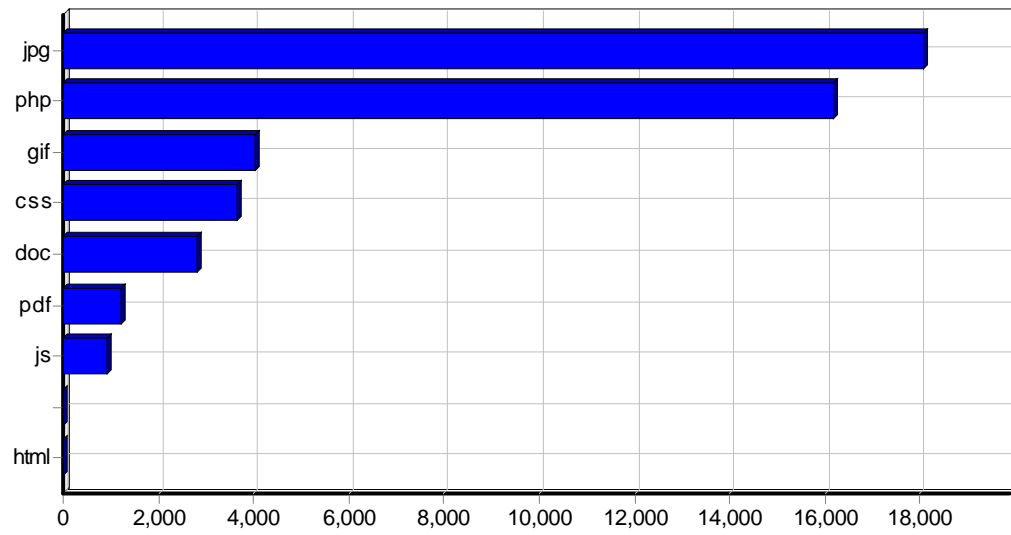




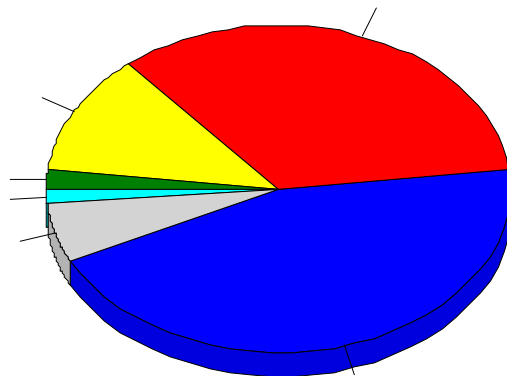
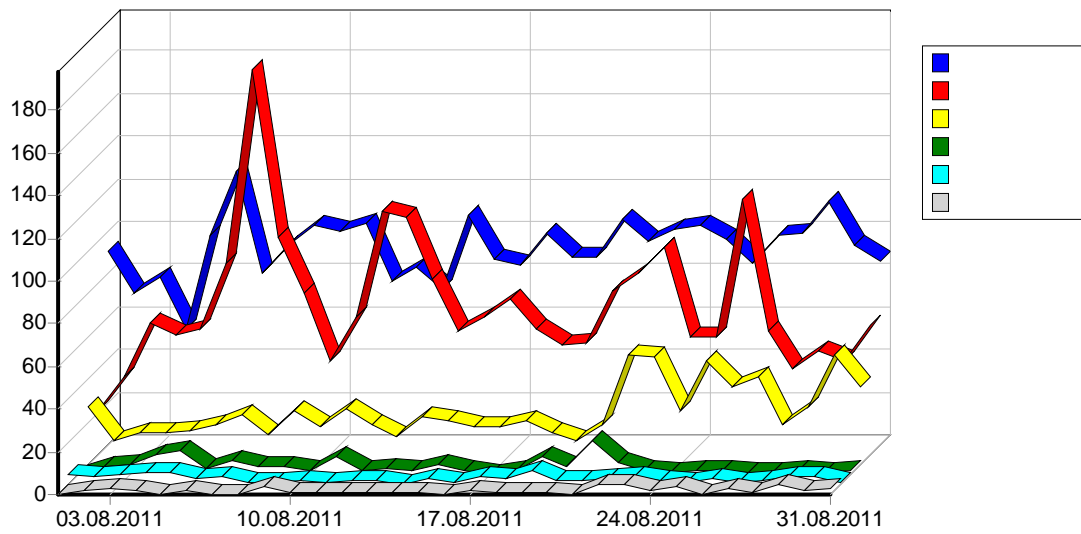
					()
1	http://www.epov.ru/	15,523	0	3,876	501,753
2	http://www.epov.ru/common/	4,572	0	1,271	5,314
3	http://www.epov.ru/content/literature/	2,193	57	1,001	371,944
4	http://www.epov.ru/images/	7,038	3	990	48,881
5	http://www.epov.ru/content/photos/	14,061	12	868	443,561
6	http://www.epov.ru/content/maps/	472	0	136	26,125
7	http://www.epov.ru/content/personalities/vetvi/	226	0	98	4,310
8	http://www.epov.ru/content/personalities/10vs/	380	0	78	10,078
9	http://www.epov.ru/content/broshura/	256	0	70	14,098
10	http://www.epov.ru/content/personalities/vetvi-yasash/	118	0	51	1,973
11	http://www.epov.ru/content/personalities/10vp/	167	0	43	3,875
12	http://www.epov.ru/content/personalities/10sn/	111	0	35	2,625
13	http://www.epov.ru/content/personalities/10vi/	221	0	32	5,518
14	http://www.epov.ru/content/personalities/10vn/	161	0	23	3,515
15	http://www.epov.ru/content/personalities/5/	35	0	23	724
16	http://www.epov.ru/content/personalities/9vi/	93	0	21	2,238
17	http://www.epov.ru/content/personalities/9sn/	49	0	18	990
18	http://www.epov.ru/content/literature/ya-vash-dyadya/	18	0	18	376
19	http://www.epov.ru/content/literature/neutomimiy-doctor/	17	0	17	537
20	http://www.epov.ru/content/personalities/8vn/	30	0	17	616
21	http://www.epov.ru/content/personalities/8sn/	29	0	16	620
22	http://www.epov.ru/content/literature/selskiy-vrach/	15	0	15	371
23	http://www.epov.ru/content/literature/dolina-konduya/	16	0	15	495
24	http://www.epov.ru/content/personalities/8vi/	27	0	15	661
25	http://www.epov.ru/content/personalities/4/	33	0	15	684
26	http://www.epov.ru/content/personalities/9vs/	79	0	14	1,924
27	http://www.epov.ru/content/personalities/6/	27	0	14	535
28	http://www.epov.ru/content/personalities/10vm/	45	0	14	952
29	http://www.epov.ru/content/personalities/10sm/	42	0	13	966
30	http://www.epov.ru/content/personalities/7/	28	0	13	593
31	http://www.epov.ru/content/literature/godi-ludi-sudbi/	13	0	13	270
32	http://www.epov.ru/content/personalities/9vn/	62	0	12	1,222
33	http://www.epov.ru/content/literature/rodoslovnaya-korennih-zabaykalt-sev/	12	0	12	297
34	http://www.epov.ru/content/literature/visotu-otstoyali/	11	0	11	319

35	http://www.epov.ru/content/personalities/0/	12	0	11	225
36	http://www.epov.ru/content/personalities/7sm/	14	0	10	273
37	http://www.epov.ru/content/personalities/9vp/	38	0	10	824
38	http://www.epov.ru/content/personalities/8sm/	15	0	9	262
39	http://www.epov.ru/content/personalities/3/	17	0	8	305
40	http://www.epov.ru/content/personalities/8vp/	13	0	8	277
41	http://www.epov.ru/content/personalities/8vs/	16	0	7	341
42	http://www.epov.ru/content/personalities/7ss/	11	0	7	216
43	http://www.epov.ru/content/personalities/1/	6	0	6	120
44	http://www.epov.ru/content/personalities/9sm/	20	0	6	418
45	http://www.epov.ru/content/personalities/2/	10	0	6	218
46	http://www.epov.ru/content/personalities/9vm/	6	0	5	121
47	http://www.epov.ru/content/personalities/7sn/	12	0	5	234
48	http://www.epov.ru/content/	13	0	4	3
49	http://www.epov.ru/content/personalities/8vm/	3	0	3	67
50	http://www.epov.ru http://www.epov.ru/	5	0	3	990
		46,391	72	-	1,463,867
		46,951	72	-	1,473,884



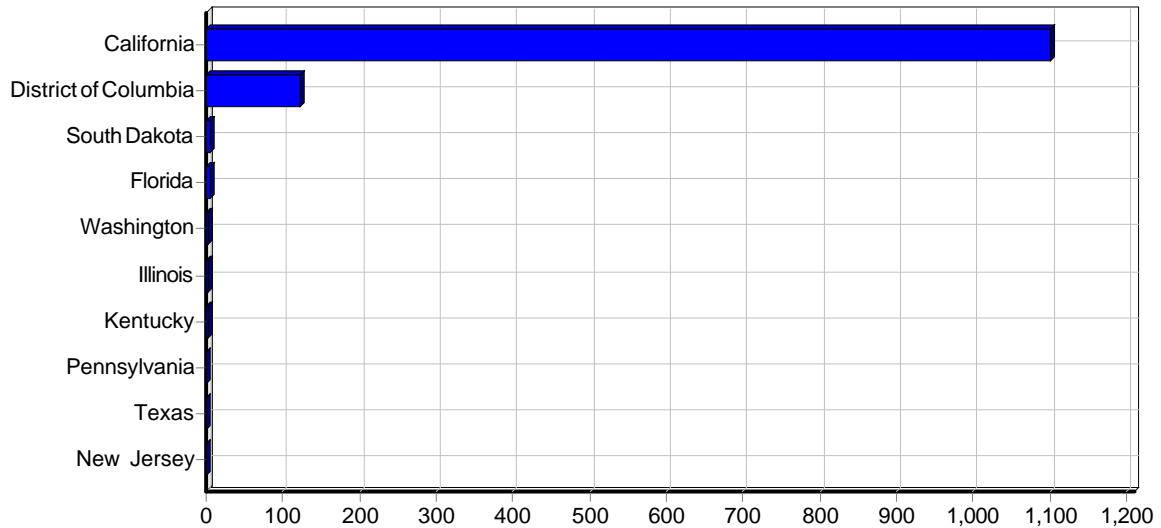


				()
1	jpg	18,070	15	543,638
2	php	16,194	0	515,332
3	gif	4,049	0	1,129
4	css	3,647	0	3,916
5	doc	2,817	11	121,648
6	pdf	1,219	46	286,721
7	js	942	0	1,418
8		7	0	76
9	html	6	0	1
		46,951	72	1,473,884



				%	()
1		26,929	2,862	44.69%	851,841
2		6,124	2,195	34.28%	155,360
3		11,039	771	12.04%	281,794
4		286	121	1.89%	8,095
5		271	89	1.39%	10,105
6		93	54	0.84%	4,881
7		298	50	0.78%	12,115
8		521	47	0.73%	16,449
9		1,143	39	0.61%	35,437
10		902	29	0.45%	39,762
11		614	18	0.28%	17,980
12		69	18	0.28%	5,741
13		59	13	0.20%	880
14		32	12	0.19%	642

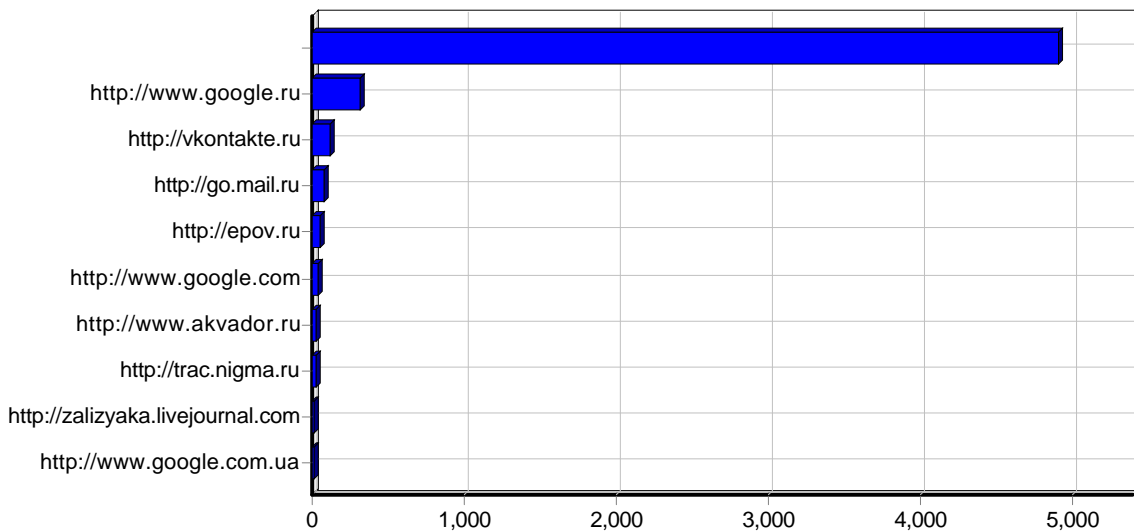
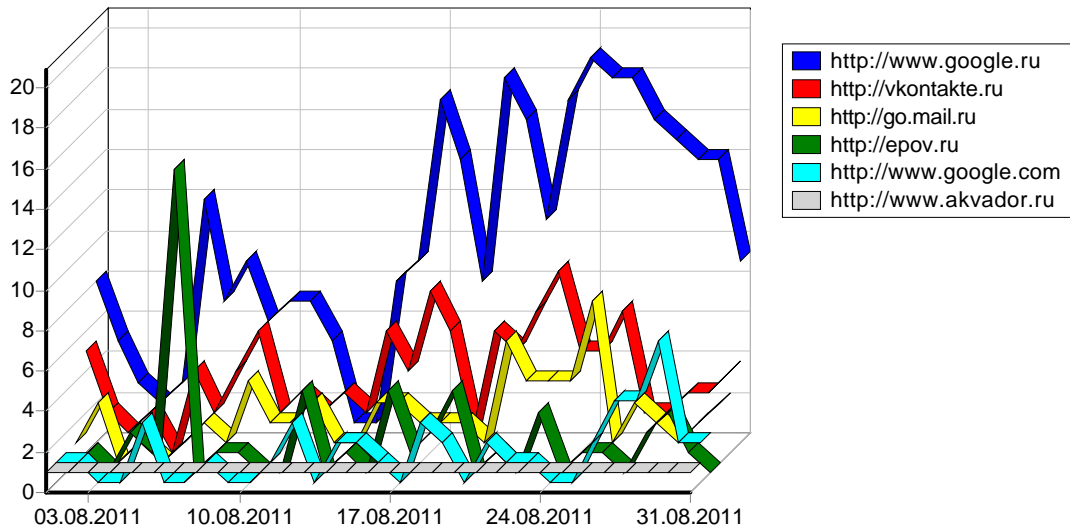
15		47	8	0.12%	1,549
16		21	8	0.12%	1,119
17		16	7	0.11%	137
18		482	7	0.11%	11,806
19		82	5	0.08%	637
20		60	4	0.06%	1,615
21		30	4	0.06%	658
22		51	4	0.06%	2,263
23		21	3	0.05%	700
24		13	2	0.03%	164
25		17	2	0.03%	1,042
26		18	2	0.03%	105
27		24	2	0.03%	542
28		15	2	0.03%	1,041
29		362	2	0.03%	5,081
30		2	2	0.03%	551
31		2	2	0.03%	493
32		3	2	0.03%	504
33		15	1	0.02%	559
34		1	1	0.02%	482
35		5	1	0.02%	54
36		1	1	0.02%	192
37		16	1	0.02%	102
38		38	1	0.02%	21
39		16	1	0.02%	174
40		1	1	0.02%	482
41		14	1	0.02%	83
42		1	1	0.02%	482
43		1	1	0.02%	154
44		1	1	0.02%	70
45		1	1	0.02%	10
46		1	1	0.02%	96
47		1	1	0.02%	10
48		13	1	0.02%	76
49		1	1	0.02%	10
50		3	1	0.02%	504
		49,776	6,404	100.00%	1,474,677



				()
1	California	2,816	1,100	82,908
2	District of Columbia	123	123	104
3	South Dakota	56	4	620
4	Florida	7	4	58
5	Washington	5	3	22
6	Illinois	9	3	1,091
7	Kentucky	15	2	98
8	Pennsylvania	1	1	0
9	Texas	1	1	10
10	New Jersey	556	1	4,098
11	Michigan	3	1	504
12	North Dakota	4	1	22
13	New York	45	1	1,161
		3,641	1,245	90,703

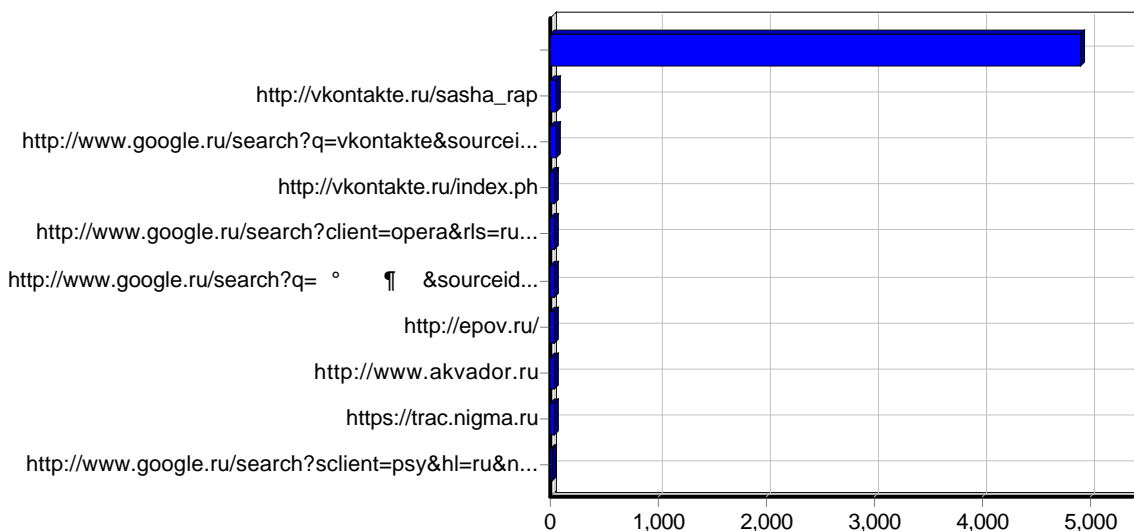
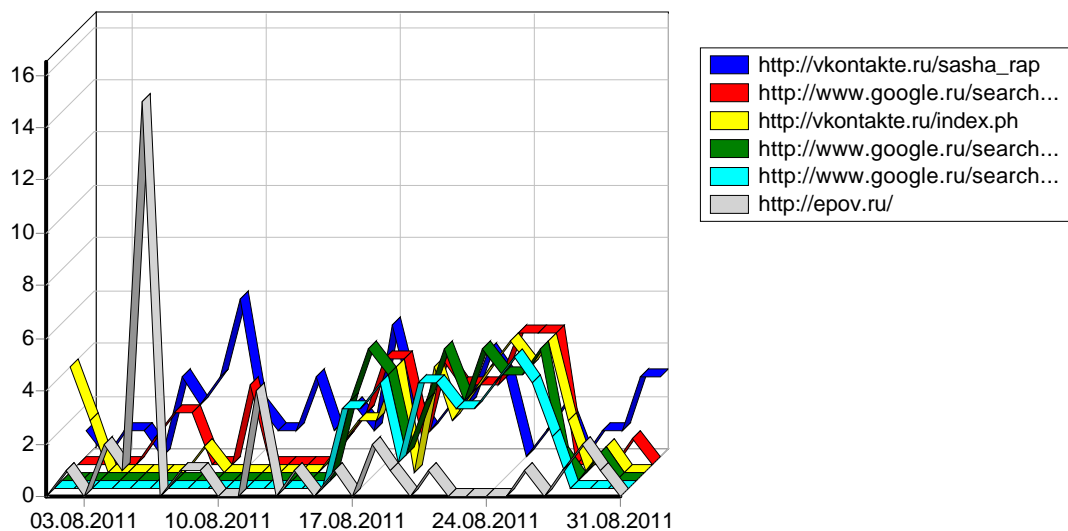
				()
1	Mountain View, California,	2,790	1,092	82,324
2	Moscow,	6,737	612	184,602
3	Washington, District of Columbia,	123	123	104
4	Sollentuna,	149	97	1,247
5	Paris,	269	87	9,945
6	Beijing,	45	42	1,157
7	Novosibirsk,	396	21	10,330
8	Saint Petersburg,	234	20	7,033
9	Krasnoyarsk,	760	18	20,745
10	Kiev,	93	17	3,437
11	Stockholm,	19	15	508
12	Redditch,	43	15	175
13	Vladivostok,	328	14	5,624

14	Milano,	43	11	5,086
15	Norwich,	27	9	4,541
16	Frankfurt Am Main,	501	8	29,553
17	Khabarovsk,	221	7	4,073
18	Minsk,	482	7	11,806
19	Odessa,	31	7	2,641
20	Munich,	88	6	1,950
21	Perm,	851	5	12,583
22	Amsterdam,	8	5	92
23	Madrid,	17	4	350
24	Krasnodar,	44	4	332
25	Chita,	34	4	2,180
26	Settimo,	4	4	1
27	Sioux Falls, South Dakota,	56	4	620
28	Kaliningrad,	132	4	3,161
29	Shanghai,	34	4	2,041
30	Tallinn,	51	4	2,263
31	Poznan,	31	3	554
32	Guangzhou,	4	3	508
33	Fort Lauderdale, Florida,	6	3	26
34	Donetsk,	7	3	1,042
35	Yekaterinburg,	3	3	352
36	Almaty,	66	3	549
37	Bila Tserkva,	7	3	1,020
38	Bellevue, Washington,	5	3	22
39	Borzya,	17	3	181
40	Novokuznetsk,	57	3	298
41	Voronezh,	6	3	515
42	London,	17	3	185
43	San Francisco, California,	6	3	1
44	Ural,	16	3	553
45	Irkutsk,	33	3	412
46	Warszawa,	16	3	1,052
47	Chicago, Illinois,	9	3	1,091
48	Hopkinsville, Kentucky,	15	2	98
49	Pavlograd,	127	2	3,249
50	Pavlikeni,	18	2	180
		15,076	2,327	422,417
		17,394	2,459	469,782



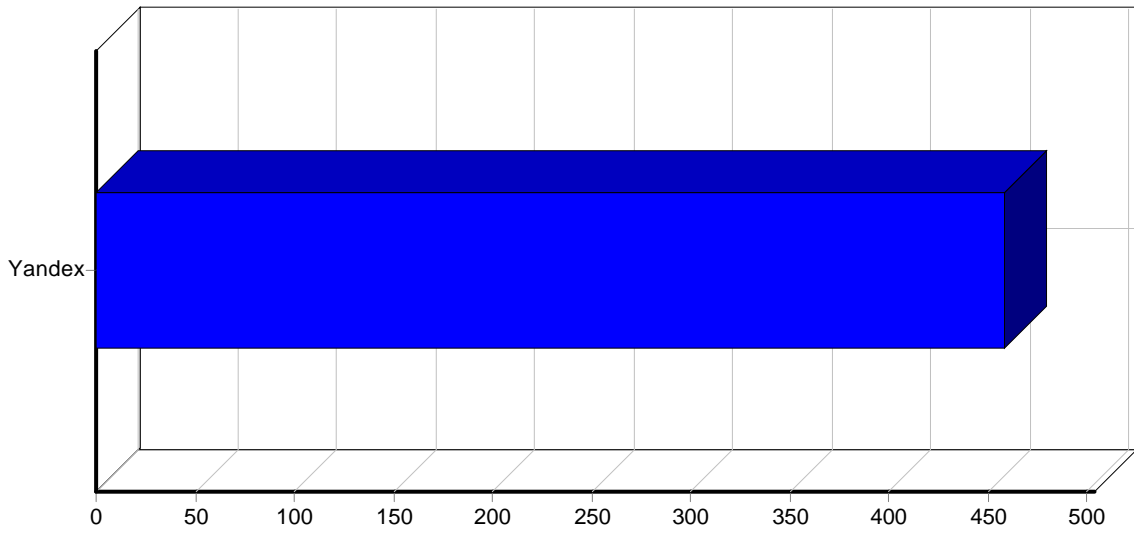
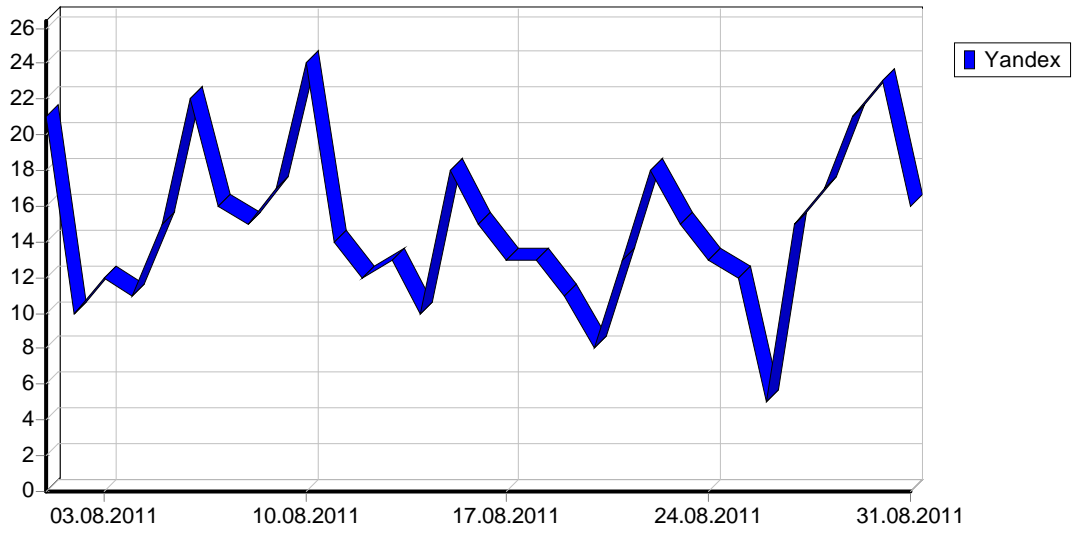
Rank	URL	Traffic Volume
1		4,904
2	http://www.google.ru	317
3	http://vkontakte.ru	121
4	http://go.mail.ru	73
5	http://epov.ru	49
6	http://www.google.com	45
7	http://www.akvador.ru	31
8	http://trac.nigma.ru	30
9	http://zalizyaka.livejournal.com	19
10	http://www.google.com.ua	18
11	http://mail.google.com	15
12	http://www.yandex.ru	14
13	http://yandex.ua	13
14	http://nova.rambler.ru	13

15	http://www.ubound.info	8
16	http://ru.wikipedia.org	8
17	http://www.priorovod.ru	8
18	http://magna.qip.ru	8
19	http://content.mail.ru	8
20	http://www.bing.com	7
21	http://www.predistoria.org	6
22	http://www.ofsi.ru	5
23	http://images.yandex.ua	5
24	http://psdshka.ru	5
25	http://vk.com	5
26	http://www.rospromptest.ru	4
27	http://streetlife.uz	4
28	http://search.livejournal.ru	4
29	http://magazin.interlot.ru	4
30	http://www.rating21.ru	4
31	http://hghld.yandex.net	4
32	http://m.go.mail.ru	3
33	http://www.43shina.ru	3
34	http://www.google.lv	3
35	http://webcache.googleusercontent.com	3
36	http://drive-stores.ru	3
37	http://predistoria.org	3
38	http://senauka.ru	3
39	http://search.ukr.net	3
40	http://symbian-blog.com	3
41	http://bamc-entertainment.tk	3
42	http://images.yandex.kz	3
43	http://lameaw.ru	3
44	http://ranive.ru	2
45	http://www.kolesa.kz	2
46	http://rubanke.ru	2
47	http://www.google.by	2
48	http://www.google.az	2
49	http://www.novaget.ru	2
50	http://proekt-gaz.ru	2
		5,809
		5,946

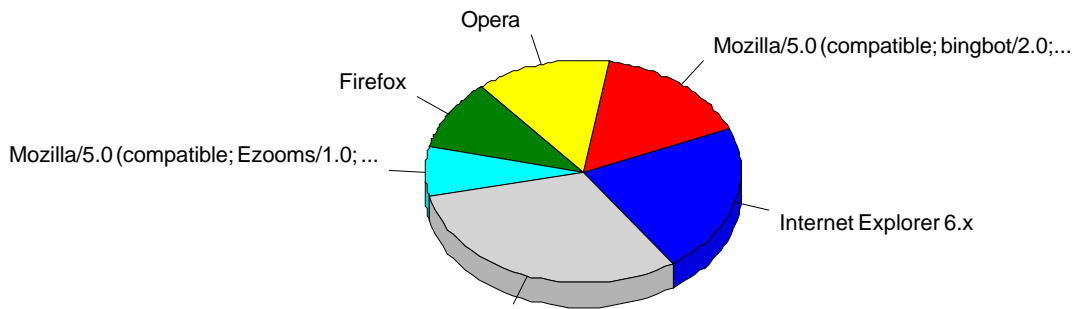
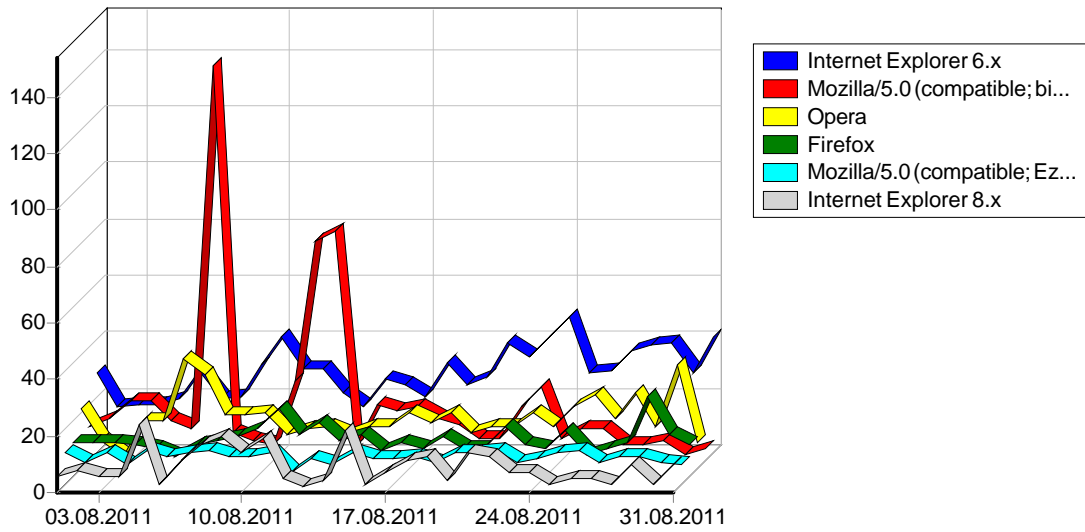


	URL	
1		4,904
2	http://vkontakte.ru/sasha_rap	58
3	http://www.google.ru/search?q=vkontakte&sourceid=opera&ie=utf-8&oe=utf-8&channel=suggest	49
4	http://vkontakte.ru/index.ph	46
5	http://www.google.ru/search?client=opera&rls=ru&q=g&sourceid=opera&ie=utf-8&oe=utf-8&channel=suggest	44
6	http://www.google.ru/search?q= ° ¶ &sourceid=opera&num=0&ie=utf-8&oe=utf-8&channel=suggest	40
7	http://epov.ru/	36
8	http://www.akvador.ru	31
9	https://trac.nigma.ru	30
10	http://www.google.ru/search?sclient=psy&hl=ru&newwindow=1&client=opera&hs=2ku&rls=ru&channel=suggest&source=hp&q= ± ° € μ , ° + μ ° , μ ° &aq=f&aqi=&aql=&oq=&pbx=1&bav=on.2,or.r_gc.r_pw.&biw=1280&bih=912&ech=1&psi=vcfktps6g8_xsgapso37bg.1313481064202.3&emsg=ncsr&noj=1&ei=4yfktv_6ccrcswbpp4ggbw	17
11	http://www.google.ru/search?hl=ru&newwindow=1&client=opera&hs=7c2&rls=ru&channel=suggest&sa=x&ei=gjhtssfhmxnswai1jykbw&ved=0cbyqbsga&q= ± ° + » ° + »&spell=1&biw=1440&bih=710&bav=on.2,or.r_gc.r_pw.&cad=b&emsg=ncsr&noj=1&ei=dzhtqx6pmtfsgbj7-ddbw	16
12	http://www.google.com/search?client=opera&rls=ru&q=facebook&sourceid=opera&ie=utf-8&oe=utf-8&channel=suggest	15
13	http://mail.google.com/?hl=ru	15
14	http://www.yandex.ru/	14

15	http://zalizyaka.livejournal.com/tag/	14
16	http://www.ubound.info/Top/World/Russian/	8
17	http://ru.wikipedia.org/wiki/	6
18	http://www.ofsi.ru/	5
19	http://vkontakte.ru/id5767376	5
20	http://www.priorovod.ru/showthread.php?p=995908	5
21	http://psdshka.ru/	5
22	http://www.rating21.ru/index.php?option=com_content&view=article&id=57&Itemid=79	4
23	http://www.rospromtest.ru/	4
24	http://www.google.ru/search?client=opera&rls=ru&q=&sourceid=opera&ie=utf-8&oe=utf-8&channel=suggest	4
25	http://streetlife.uz/	4
26	http://magazin.interlot.ru/	4
27	http://search.livejournal.ru/search?query=&ie=utf-8	4
28	http://www.google.ru/search?q=€&sourceid=opera&ie=utf-8&oe=utf-8&channel=suggest	4
29	http://nova.rambler.ru/search?query=drjynfrnt	4
30	http://senauka.ru/	3
31	http://www.google.ru/search?q=vkontakte.ru&sourceid=opera&ie=utf-8&oe=utf-8&channel=suggest	3
32	http://content.mail.ru/redirect?url=http://www.epov.ru/content/literature/statistic-report-06-2011.pdf	3
33	http://www.google.ru/search?client=opera&rls=ru&q=+&sourceid=opera&ie=utf-8&oe=utf-8&channel=suggest	3
34	http://vk.com/sasha_rap	3
35	http://symbian-blog.com/	3
36	http://www.priorovod.ru/showthread.php?t=1732&page=25	3
37	http://drive-stores.ru/	3
38	http://lameaw.ru/	3
39	http://epov.ru/?section=gbook	3
40	http://content.mail.ru/redirect?url=http://www.epov.ru/index.php?section=gbook	3
41	http://www.google.ru/search?q=+&sourceid=opera&ie=utf-8&oe=utf-8&channel=suggest	3
42	http://www.google.ru/	3
43	http://www.43shina.ru/tyres/Pirelli	3
44	http://www.google.com/search?q=m.ok.ru&sourceid=opera&ie=utf-8&oe=utf-8&channel=suggest	3
45	http://zalizyaka.livejournal.com/tag/	3
46	http://www.google.ru/search?q=&sourceid=opera&ie=utf-8&oe=utf-8&channel=suggest	2
47	http://www.google.ru/search?sclient=psy&hl=ru&newwindow=1&site=&source=hp&q=&btng=	2
48	http://deportal.tk	2
49	http://onkoleted.mybb.ru/	2
50	http://dansite.ru/	2
		5,453
		5,946

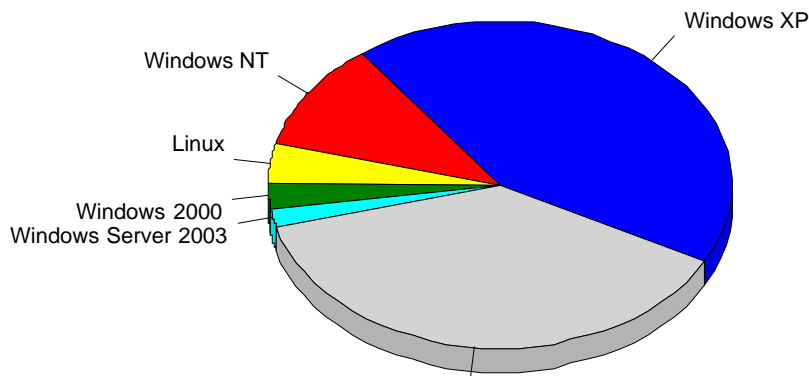
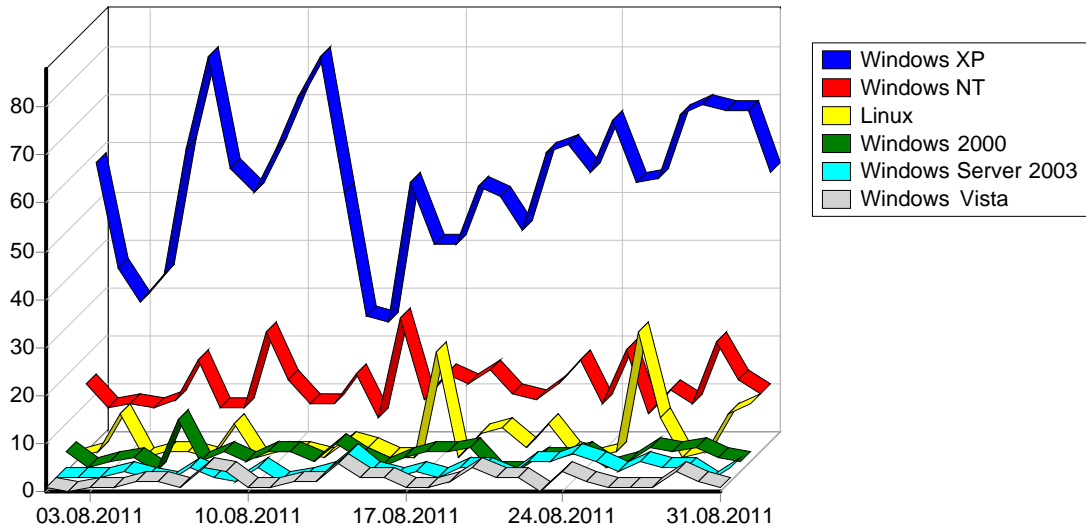


1	Yandex	458
		458



				%
1	Internet Explorer 6.x	4,793	888	21.72%
2	Mozilla/5.0 (compatible; bingbot/2.0; +http://www.bing.com/bingbot.htm)	1,061	650	15.90%
3	Opera	8,156	570	13.94%
4	Firefox	6,788	409	10.00%
5	Mozilla/5.0 (compatible; Ezooms/1.0; ezooms.bot@gmail.com)	540	297	7.26%
6	Internet Explorer 8.x	5,196	285	6.97%
7	Safari	3,672	267	6.53%
8	Internet Explorer 7.x	1,452	176	4.30%
9	Mozilla/5.0 (compatible; discobot/1.1; +http://discoveryengine.com/discobot.html)	121	121	2.96%
10	Internet Explorer 5.x	148	87	2.13%
11	Mozilla/5.0 (compatible; MJ12bot/v1.4.0; http://www.majestic12.co.uk/bot.php?+)	225	39	0.95%
12	Internet Explorer 9.x	1,837	36	0.88%
13		720	32	0.78%
14	searchsite.akvador allsite	31	31	0.76%

15	TestNutch/Nutch-1.2 (testing Nutch; http://nutch.apache.org ; info@nutch.apache.org)	834	20	0.49%
16	Netscape 4.x	594	16	0.39%
17	Internet Explorer 2.x	29	14	0.34%
18	Microsoft Office Protocol Discovery	16	14	0.34%
19	Mozilla/5.0 (compatible; stat.cctld.ru/Bot; + http://stat.cctld.ru/bot.html)	13	13	0.32%
20	Gecko; Google Web Preview) Version/4.0 Mobile Sa	18	12	0.29%
21	Internet Explorer 4.x	24	12	0.29%
22	Netscape 0.x	20	9	0.22%
23	Microsoft Office Existence Discovery	10	8	0.20%
24	Mozilla/4.7 (compatible; OffByOne; Windows 2000) Webster Pro V3.4	19	7	0.17%
25	Netscape 5.x	34	6	0.15%
26	Microsoft Data Access Internet Publishing Provider Protocol Discovery	8	4	0.10%
27	Nokia6230i/2.0 (03.30) Profile/MIDP-2.0 Configuration/CLDC-1.1	5	4	0.10%
28	Microsoft-WebDAV-MiniRedir/5.1.2600	28	3	0.07%
29	RankurBot/Rankur2.1 (http://rankur.com ; info at rankur dot com)	6	3	0.07%
30	FlightDeckReportsBot/2.0 (http://www.flightdeckreports.com/pages/bot)	5	3	0.07%
31	Gecko) Version/5.0.2 Mobile/8L1 Safa	41	3	0.07%
32	Mozilla/5.0 (compatible; NerdByNature.Bot; http://www.nerdbynature.net/bot)	210	2	0.05%
33	UC Browser7.4.0.65/28/400	17	2	0.05%
34	Mozilla/5.0 (compatible; Google Desktop/5.9.1005.12335; http://desktop.google.com/)	2	2	0.05%
35	Mozilla/5.0 (compatible)	10	2	0.05%
36	Internet Explorer 3.x	4	2	0.05%
37	Mail.RU/2.0	3	2	0.05%
38	360se	4	2	0.05%
39	Lynx	2	2	0.05%
40	Download Master	9	2	0.05%
41	http://yandos.ru -BOT(v.1.9)	28	2	0.05%
42	Dillo/0.8.6	1	1	0.02%
43	PycURL/7.19.4	1	1	0.02%
44	Dillo/2.0	1	1	0.02%
45	SAMSUNG-GT-S3550/1.0 NetFront/3.5 Profile/MIDP-2.0 Configuration/CLDC-1.1	4	1	0.02%
46	Dillo/0.8.6-i18n-misc	1	1	0.02%
47	DavClnt	1	1	0.02%
48	http://www.sexyshoph24.it /sexyshop (sexy shop - sexy toys, BDSM, vibratori, falli, vagine, lubrificanti, dvd porno, film hard,	2	1	0.02%
49	http://yandos.ru (BOT-V1.3) (82084)	1	1	0.02%
50	multi_get	1	1	0.02%
		36,746	4,068	99.49%
		38,039	4,089	100.00%



				%
1	Windows XP	18,420	1,694	42.93%
2		8,089	1,345	34.09%
3	Windows NT	7,069	427	10.82%
4	Linux	979	156	3.95%
5	Windows 2000	284	97	2.46%
6	Windows Server 2003	219	68	1.72%
7	Windows Vista	2,699	66	1.67%
8	Windows ME	58	33	0.84%
9	Windows 98	52	31	0.79%
10	Windows 95	35	12	0.30%
11	Mac OS	107	7	0.18%
12	Windows 3.x	16	4	0.10%
13	Windows Win32s	3	3	0.08%
14	Windows CE	5	2	0.05%
15	Sun OS	4	1	0.03%
		38,039	3,946	100.00%