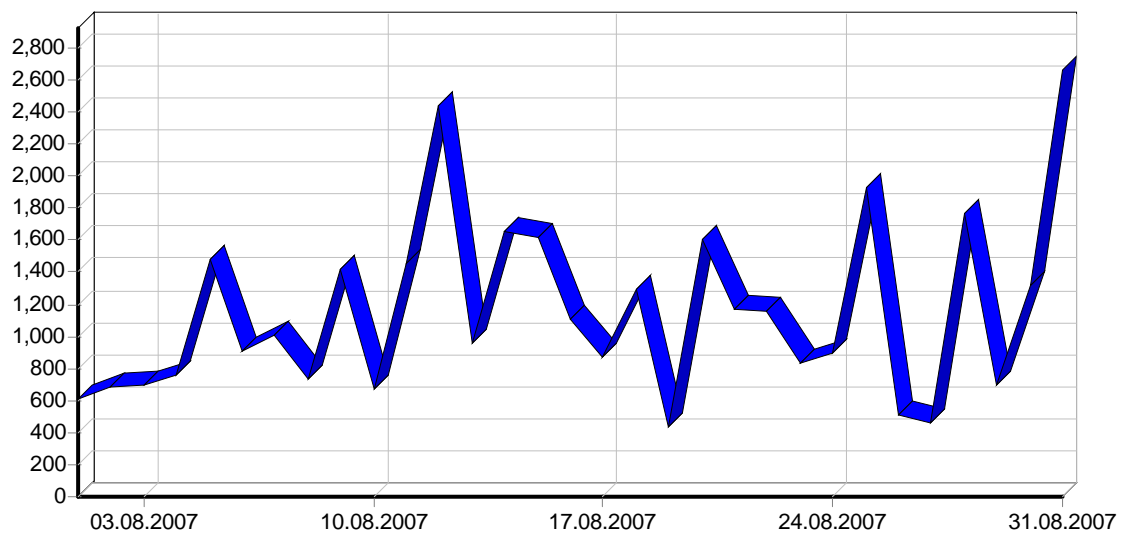
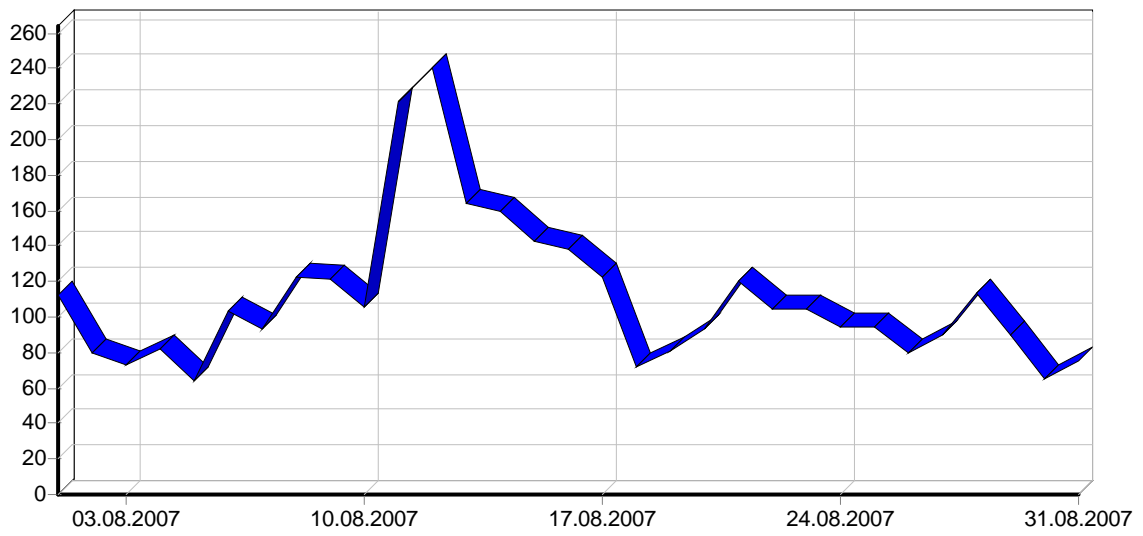
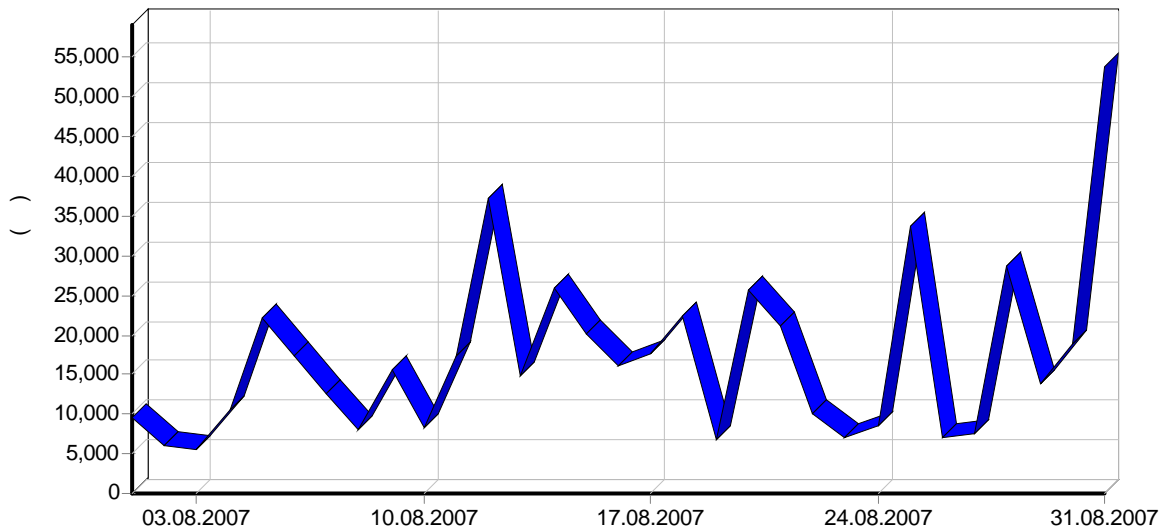
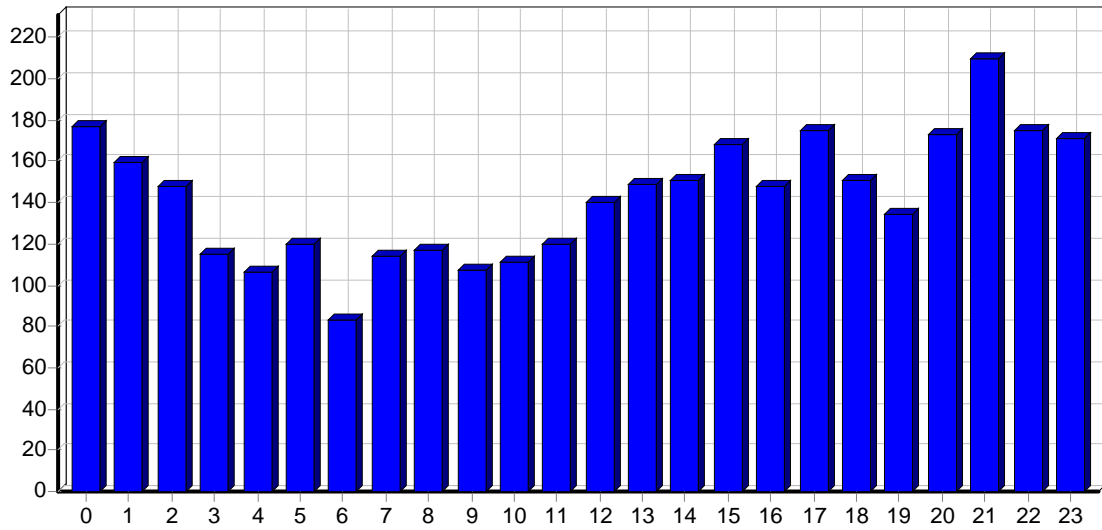


	35,789
	1,154
	10,46
	3,841
	4,179
	10,486
	338
	3.06
	3,422
	110
IP-	1,551
	517.17
	16.68
	14.80
	154.76

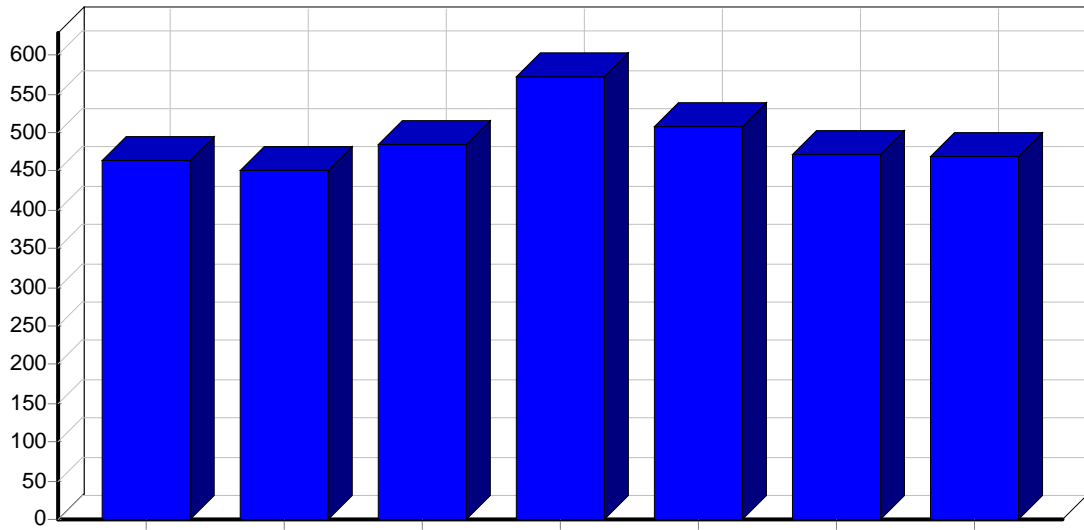




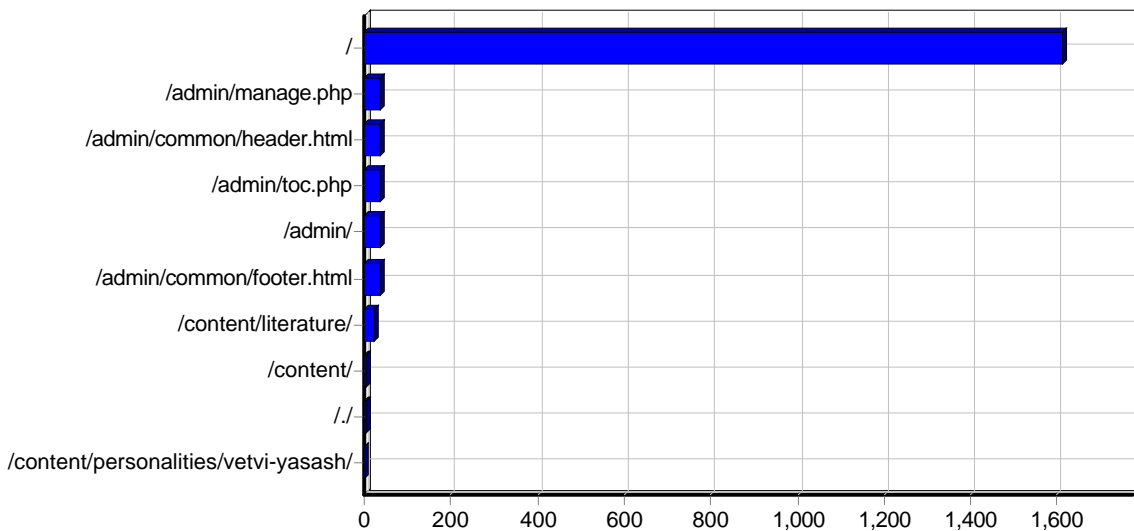
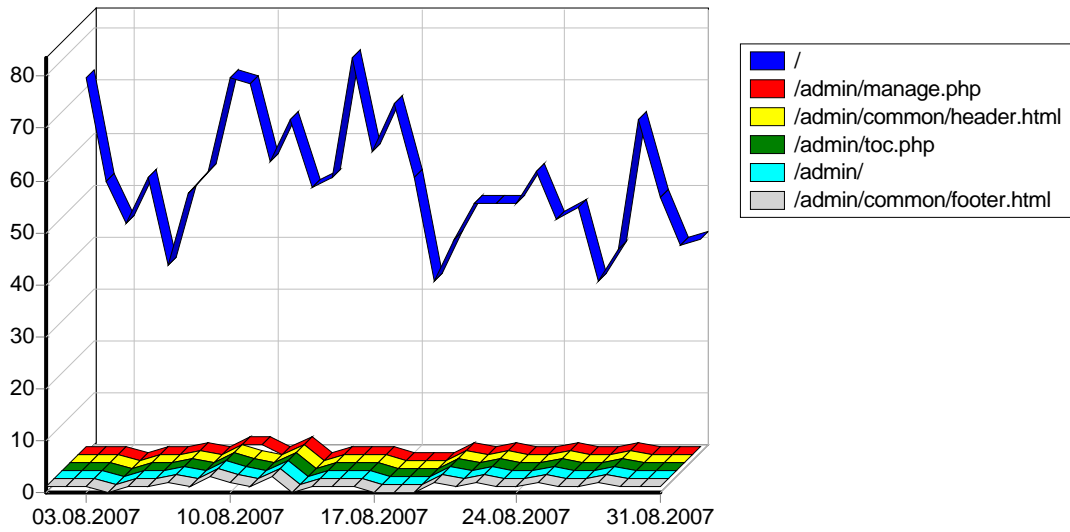
					( )
01.08.2007	604	235	112	07:13	9,471
02.08.2007	683	392	80	04:09	5,934
03.08.2007	699	528	73	04:07	5,532
04.08.2007	753	141	82	08:24	10,682
05.08.2007	1,481	635	64	07:52	22,185
06.08.2007	902	204	103	03:05	17,310
07.08.2007	1,002	242	93	04:12	12,690
08.08.2007	739	192	122	01:56	7,954
09.08.2007	1,423	345	121	02:40	15,487
10.08.2007	669	144	106	04:55	8,211
11.08.2007	1,450	331	221	05:13	17,359
12.08.2007	2,440	319	240	03:07	37,208
13.08.2007	959	108	164	03:03	14,743
14.08.2007	1,656	725	159	04:42	26,017
15.08.2007	1,623	305	143	08:52	20,172
16.08.2007	1,105	309	138	09:53	16,093
17.08.2007	876	117	123	04:16	17,502
18.08.2007	1,292	602	72	06:19	22,478
19.08.2007	436	125	81	04:28	6,772
20.08.2007	1,607	700	93	05:46	25,707
21.08.2007	1,167	234	120	11:31	21,152
22.08.2007	1,161	151	105	09:33	9,996
23.08.2007	837	180	105	09:13	7,164
24.08.2007	894	166	94	05:19	8,441
25.08.2007	1,927	646	94	12:37	33,622
26.08.2007	504	147	80	06:24	6,948
27.08.2007	459	128	90	06:09	7,486
28.08.2007	1,762	693	114	06:16	28,764
29.08.2007	699	80	90	11:16	13,868
30.08.2007	1,323	424	65	08:55	18,843
31.08.2007	2,657	938	75	05:00	53,774
	<b>35,789</b>	<b>10,486</b>	<b>3,422</b>	<b>06:06</b>	<b>529,580</b>



			( )
00:00 - 00:59	1,099	177	17,999
01:00 - 01:59	1,602	159	21,055
02:00 - 02:59	1,015	148	12,427
03:00 - 03:59	792	115	12,173
04:00 - 04:59	719	106	10,257
05:00 - 05:59	797	120	9,624
06:00 - 06:59	622	83	9,647
07:00 - 07:59	1,134	114	16,431
08:00 - 08:59	994	117	15,370
09:00 - 09:59	2,017	107	30,640
10:00 - 10:59	835	111	9,405
11:00 - 11:59	1,417	120	19,875
12:00 - 12:59	1,068	140	16,214
13:00 - 13:59	1,263	149	15,951
14:00 - 14:59	1,222	151	14,558
15:00 - 15:59	1,624	168	23,779
16:00 - 16:59	1,553	148	22,474
17:00 - 17:59	3,009	175	46,554
18:00 - 18:59	2,887	151	47,591
19:00 - 19:59	1,143	134	22,581
20:00 - 20:59	2,330	173	35,159
21:00 - 21:59	1,651	210	15,971
22:00 - 22:59	3,330	175	64,005
23:00 - 23:59	1,666	171	19,826
	<b>35,789</b>	<b>3,422</b>	<b>529,580</b>

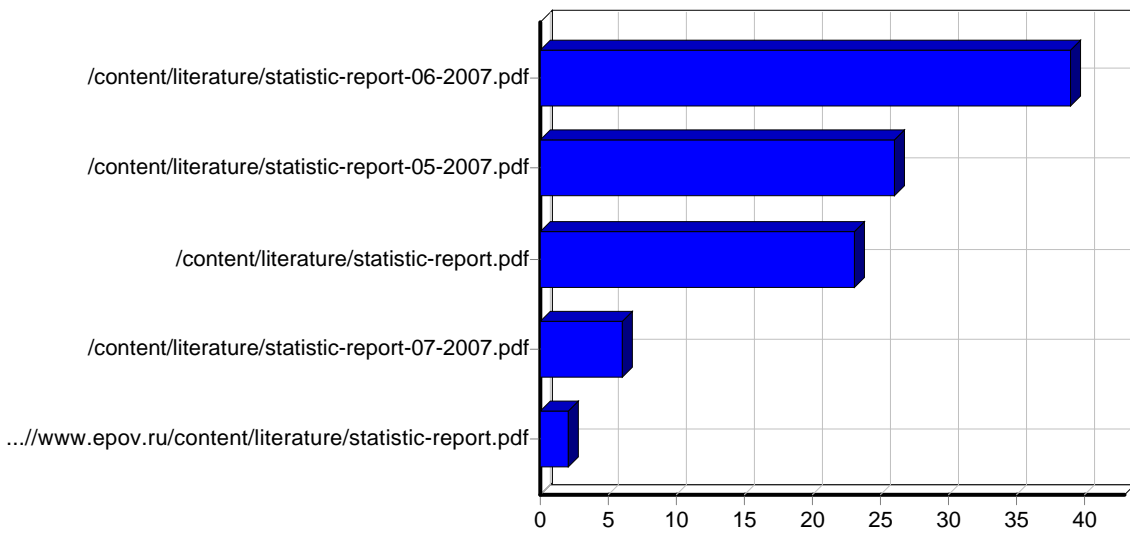
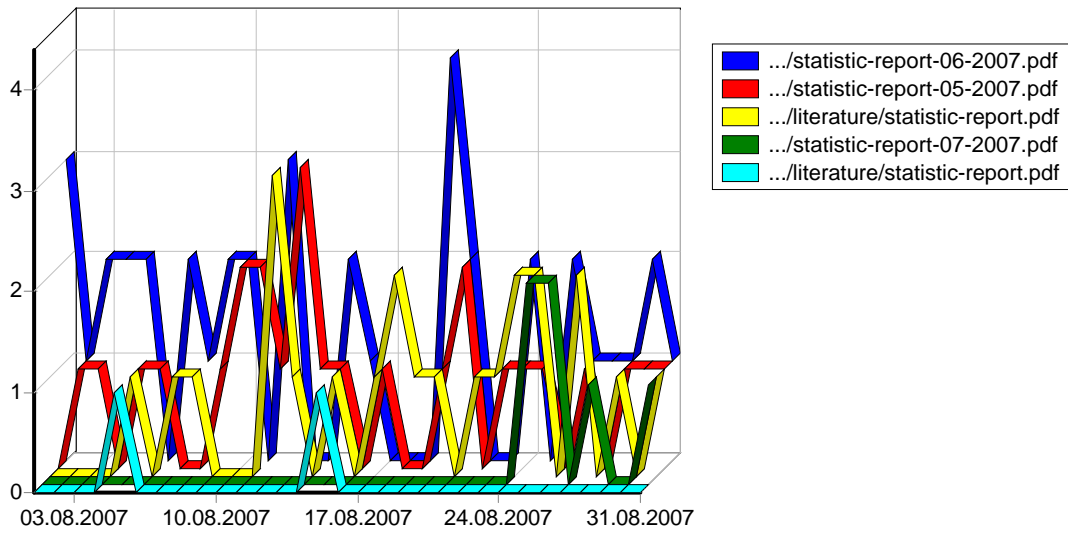


			( )
	4,861	465	73,114
	3,927	450	65,248
	5,587	486	88,624
	4,826	572	61,464
	5,371	509	63,523
	5,795	471	93,461
	5,422	469	84,144
	<b>35,789</b>	<b>3,422</b>	<b>529,580</b>

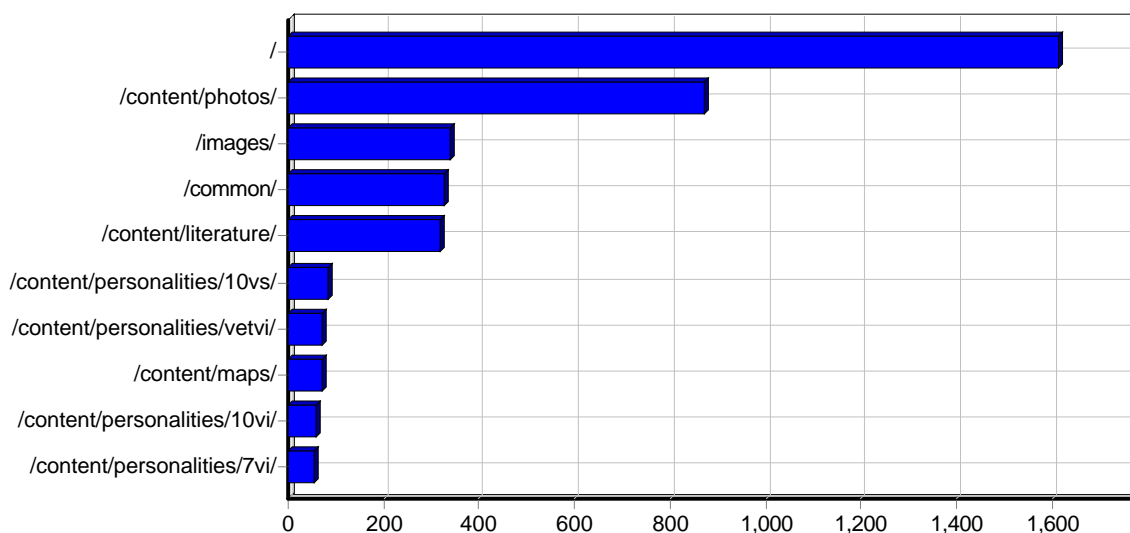
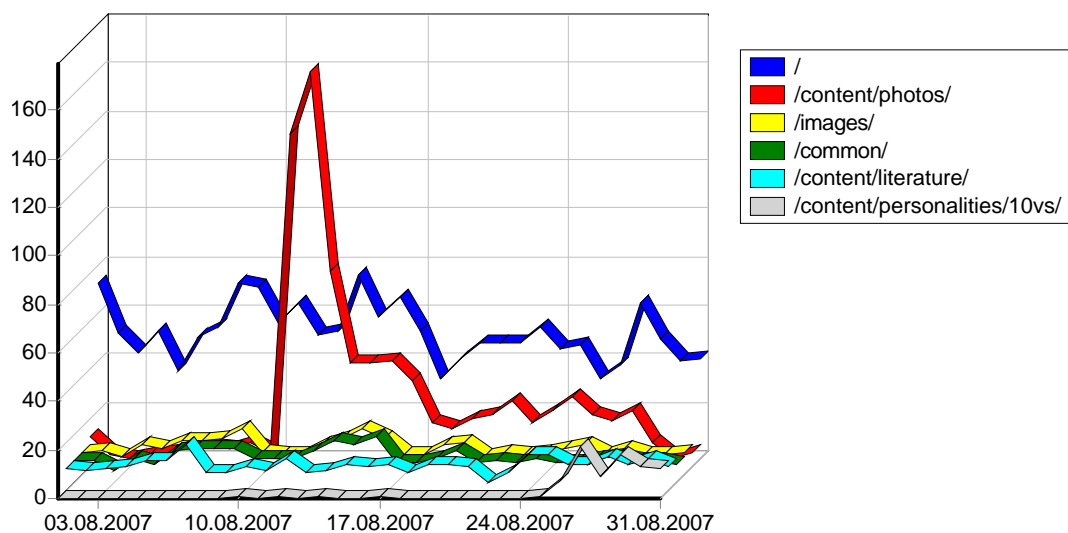


					( )
1	http://www.epov.ru/	10,058	0	1,612	105,174
2	http://www.epov.ru/admin/manage.php	130	0	37	9,689
3	http://www.epov.ru/admin/common/header.html	37	0	36	2
4	http://www.epov.ru/admin/toc.php	42	0	36	44
5	http://www.epov.ru/admin/	64	0	36	28
6	http://www.epov.ru/admin/common/footer.html	37	0	36	3
7	http://www.epov.ru/content/literature/	21	0	21	0
8	http://www.epov.ru/content/	14	0	6	4
9	http://www.epov.ru/./	3	0	3	32
10	http://www.epov.ru/content/personalities/vetvi-yasash/	2	0	2	0
11	http://www.epov.ru/content/personalities/vetvi/	2	0	2	0
12	http://www.epov.ru/content/personalities/10vs/	2	0	2	0
13	http://www.epov.ru/content/personalities/1/	2	0	2	0

14	<a href="http://www.epov.ru/content/personalities/0/">http://www.epov.ru/content/personalities/0/</a>	2	0	2	0
15	<a href="http://www.epov.ru">http://www.epov.ru</a> <a href="http://www.epov.ru/">http://www.epov.ru/</a>	1	0	1	97
16	<a href="http://www.epov.ru/content/personalities/9vs/">http://www.epov.ru/content/personalities/9vs/</a>	1	0	1	0
17	<a href="http://www.epov.ru/content/personalities/7vs/">http://www.epov.ru/content/personalities/7vs/</a>	1	0	1	0
18	<a href="http://www.epov.ru/content/personalities/8sn/">http://www.epov.ru/content/personalities/8sn/</a>	1	0	1	0
19	<a href="http://www.epov.ru/content/personalities/8vs/">http://www.epov.ru/content/personalities/8vs/</a>	1	0	1	0
		<b>10,421</b>	<b>0</b>	-	<b>115,077</b>



					( )
1	<a href="http://www.epov.ru/content/literature/statistic-report-06-2007.pdf">http://www.epov.ru/content/literature/statistic-report-06-2007.pdf</a>	53	11	39	3,198
2	<a href="http://www.epov.ru/content/literature/statistic-report-05-2007.pdf">http://www.epov.ru/content/literature/statistic-report-05-2007.pdf</a>	34	6	26	1,650
3	<a href="http://www.epov.ru/content/literature/statistic-report.pdf">http://www.epov.ru/content/literature/statistic-report.pdf</a>	35	11	23	4,367
4	<a href="http://www.epov.ru/content/literature/statistic-report-07-2007.pdf">http://www.epov.ru/content/literature/statistic-report-07-2007.pdf</a>	10	2	6	1,040
5	<a href="http://www.epov.ru">http://www.epov.ru</a> <a href="http://www.epov.ru/content/literature/statistic-report.pdf">http://www.epov.ru/content/literature/statistic-report.pdf</a>	2	0	2	397
		<b>134</b>	<b>30</b>	-	<b>10,654</b>



					( )
1	<a href="http://www.epov.ru/">http://www.epov.ru/</a>	10,058	0	1,612	105,174
2	<a href="http://www.epov.ru/content/photos/">http://www.epov.ru/content/photos/</a>	6,977	27	870	188,445
3	<a href="http://www.epov.ru/images/">http://www.epov.ru/images/</a>	3,818	3	338	17,941
4	<a href="http://www.epov.ru/common/">http://www.epov.ru/common/</a>	3,428	1	326	5,273
5	<a href="http://www.epov.ru/content/literature/">http://www.epov.ru/content/literature/</a>	1,091	44	320	65,979
6	<a href="http://www.epov.ru/content/personalities/10vs/">http://www.epov.ru/content/personalities/10vs/</a>	837	0	85	20,353
7	<a href="http://www.epov.ru/content/personalities/vetvi/">http://www.epov.ru/content/personalities/vetvi/</a>	469	0	73	6,149
8	<a href="http://www.epov.ru/content/maps/">http://www.epov.ru/content/maps/</a>	271	1	72	16,915
9	<a href="http://www.epov.ru/content/personalities/10vi/">http://www.epov.ru/content/personalities/10vi/</a>	544	0	57	12,740
10	<a href="http://www.epov.ru/content/personalities/7vi/">http://www.epov.ru/content/personalities/7vi/</a>	94	0	55	1,477
11	<a href="http://www.epov.ru/content/personalities/10vn/">http://www.epov.ru/content/personalities/10vn/</a>	400	0	50	8,706
12	<a href="http://www.epov.ru/content/personalities/vetvi-yasash/">http://www.epov.ru/content/personalities/vetvi-yasash/</a>	120	0	46	1,529
13	<a href="http://www.epov.ru/content/personalities/10vp/">http://www.epov.ru/content/personalities/10vp/</a>	375	0	42	8,270
14	<a href="http://www.epov.ru/admin/common/">http://www.epov.ru/admin/common/</a>	305	0	37	54
15	<a href="http://www.epov.ru/admin/">http://www.epov.ru/admin/</a>	236	0	37	9,762
16	<a href="http://www.epov.ru/content/personalities/9vi/">http://www.epov.ru/content/personalities/9vi/</a>	235	0	33	5,022

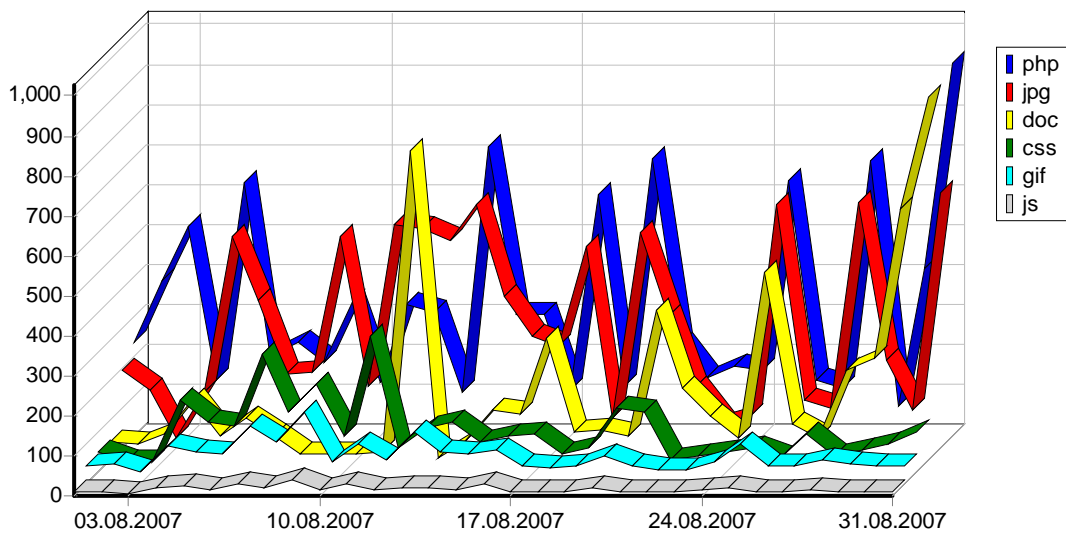


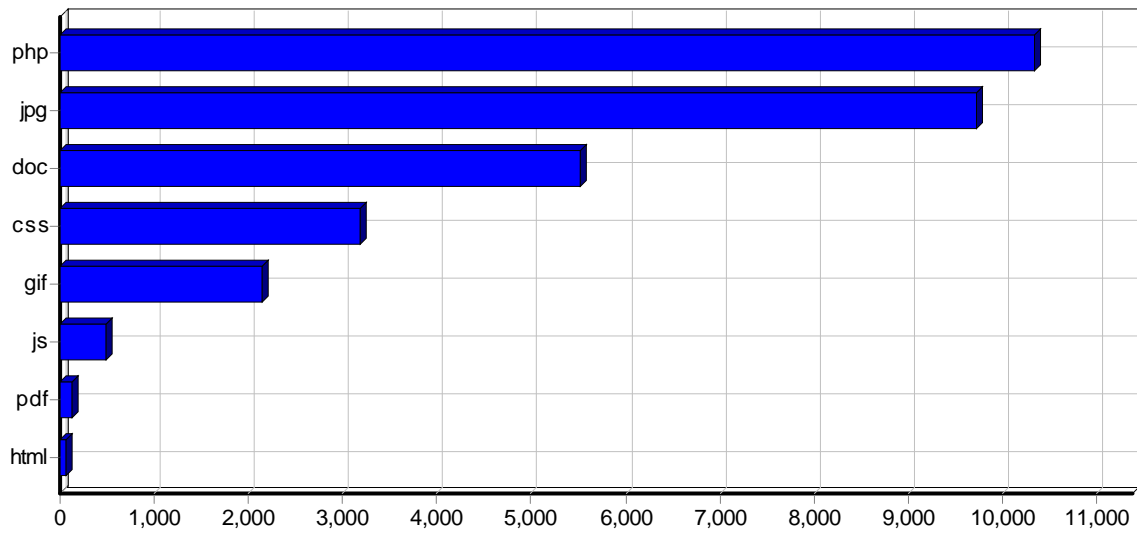
17	http://www.epov.ru/content/personalities/9vs/	223	0	27	4,875
18	http://www.epov.ru/content/personalities/10sn/	257	0	24	5,700
19	http://www.epov.ru/content/personalities/4/	89	0	23	1,797
20	http://www.epov.ru/content/personalities/9vn/	179	0	22	3,571
21	http://www.epov.ru/content/personalities/9vp/	126	0	22	2,691
22	http://www.epov.ru/admin/images/	22	0	22	1
23	http://www.epov.ru/content/personalities/9sn/	124	0	18	2,532
24	http://www.epov.ru/content/broshura/	450	0	18	15,905
25	http://www.epov.ru/content/personalities/10vm/	108	0	17	2,232
26	http://www.epov.ru/content/personalities/3/	64	0	16	1,348
27	http://www.epov.ru/content/personalities/6/	74	0	15	1,509
28	http://www.epov.ru/content/personalities/7vm/	21	0	14	309
29	http://www.epov.ru/content/personalities/8vs/	40	0	13	791
30	http://www.epov.ru/content/personalities/5/	63	0	13	1,288
31	http://www.epov.ru/content/personalities/7vs/	71	0	13	1,288
32	http://www.epov.ru/content/personalities/8sn/	52	0	12	1,024
33	http://www.epov.ru/content/personalities/2/	21	0	12	451
34	http://www.epov.ru/content/personalities/7vn/	12	0	11	182
35	http://www.epov.ru/content/personalities/1/	15	0	11	220
36	http://www.epov.ru/content/personalities/8vn/	54	0	11	1,101
37	http://www.epov.ru/content/personalities/8vi/	30	0	10	663
38	http://www.epov.ru/content/personalities/9vm/	16	0	9	324
39	http://www.epov.ru/content/personalities/0/	13	0	9	184
40	http://www.epov.ru/content/personalities/8vp/	24	0	9	492
41	http://www.epov.ru/content/personalities/7vp/	16	0	8	304
42	http://www.epov.ru/content/personalities/8vm/	6	0	6	120
43	http://www.epov.ru/content/personalities/6vs/	17	0	6	216
44	http://www.epov.ru/content/personalities/6vi/	8	0	6	169
45	http://www.epov.ru/content/	14	0	6	4
46	http://www.epov.ru/content/personalities/7/	52	0	6	1,091
47	http://www.epov.ru/content/personalities/7sn/	26	0	6	512
48	http://www.epov.ru/content/personalities/7ss/	20	0	5	392
49	http://www.epov.ru/content/personalities/7sm/	15	0	5	292
50	http://www.epov.ru/content/personalities/6sn/	6	0	4	135
		<b>31,586</b>	<b>76</b>	-	<b>527,516</b>
		<b>31,610</b>	<b>76</b>	-	<b>528,351</b>



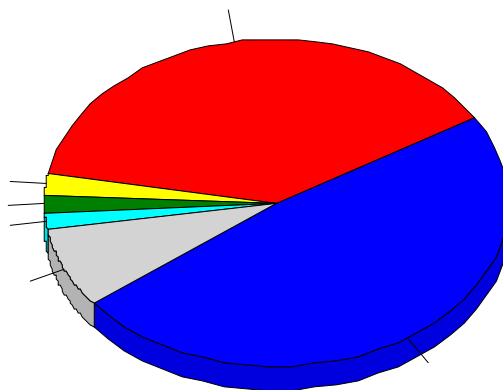
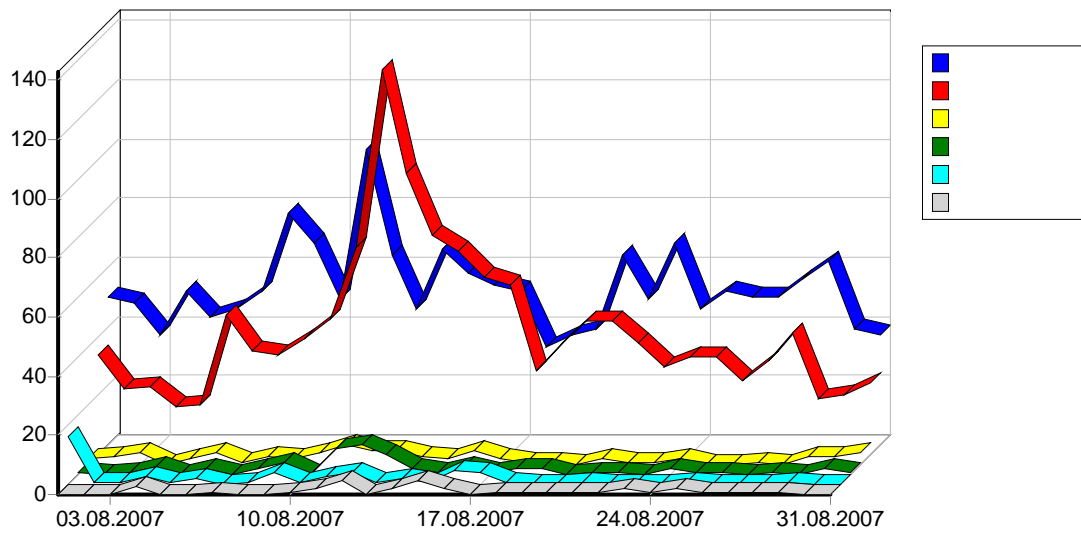
			%
1	/	1,574	95.45%
2	/admin/ -> /admin/common/header.html -> /admin/toc.php -> /admin/manage.php -> /admin/common/footer.html -> /admin/manage.php	14	0.85%
3	/admin/ -> /admin/common/header.html -> /admin/toc.php -> /admin/common/footer.html -> /admin/manage.php	11	0.67%
4	/content/literature/ -> /	9	0.55%
5	/content/literature/	4	0.24%
6	/ -> /content/literature/ -> /	4	0.24%
7	/content/ -> / -> /content/	3	0.18%
8	/admin/ -> /admin/common/header.html -> /admin/toc.php -> /admin/manage.php -> /admin/common/footer.html -> /admin/manage.php -> /admin/toc.php	3	0.18%
9	/ -> /./ -> /	2	0.12%
10	/content/literature/ -> /content/ -> /	2	0.12%

11	/admin/ -> /admin/common/header.html -> /admin/toc.php -> /admin/manage.php -> /admin/common/footer.html -> /admin/manage.php -> /	1	0.06%
12	/admin/ -> /admin/common/header.html -> /admin/toc.php -> /admin/manage.php -> /admin/common/footer.html	1	0.06%
13	http://www.epov.ru/ -> /	1	0.06%
14	/content/personalities/vetvi-yasash/ -> /	1	0.06%
15	/content/personalities/7vs/ -> /	1	0.06%
16	/content/ -> /	1	0.06%
17	/admin/ -> /admin/toc.php -> /admin/common/header.html -> /admin/manage.php -> /admin/common/footer.html -> /admin/manage.php	1	0.06%
18	/admin/manage.php	1	0.06%
19	/admin/ -> /admin/common/header.html -> /admin/toc.php -> /admin/common/footer.html -> /admin/manage.php -> /admin/toc.php -> / -> /content/literature/ -> /	1	0.06%
20	/ -> /content/personalities/0/ -> /	1	0.06%
21	/ -> /content/personalities/1/ -> /	1	0.06%
22	/ -> /content/personalities/10vs/ -> /	1	0.06%
23	/ -> /content/literature/ -> / -> /content/personalities/0/ -> / -> /content/personalities/1/ -> /	1	0.06%
24	/ -> /admin/ -> /admin/common/header.html -> /admin/toc.php -> /admin/common/footer.html -> /admin/manage.php	1	0.06%
25	/ -> /admin/ -> /admin/common/header.html -> /admin/toc.php -> /admin/common/footer.html -> /admin/manage.php -> /admin/toc.php -> /admin/ -> /admin/common/header.html -> /admin/toc.php -> /admin/manage.php -> /admin/common/footer.html	1	0.06%
26	/ -> /admin/ -> /admin/common/header.html -> /admin/toc.php -> /admin/manage.php -> /admin/common/footer.html -> /admin/manage.php	1	0.06%
27	/ -> /content/personalities/vetvi/ -> /	1	0.06%
28	./	1	0.06%
29	/admin/ -> /admin/common/header.html -> /admin/manage.php -> /admin/toc.php -> /admin/common/footer.html -> /admin/manage.php	1	0.06%
30	/ -> /content/personalities/vetvi-yasash/ -> /	1	0.06%
31	/ -> /content/personalities/8sn/ -> /	1	0.06%
32	/ -> /content/personalities/8vs/ -> / -> /content/personalities/10vs/ -> /	1	0.06%
33	/ -> /content/personalities/9vs/ -> / -> /content/personalities/vetvi/ -> /	1	0.06%
		<b>1,649</b>	<b>100.00%</b>



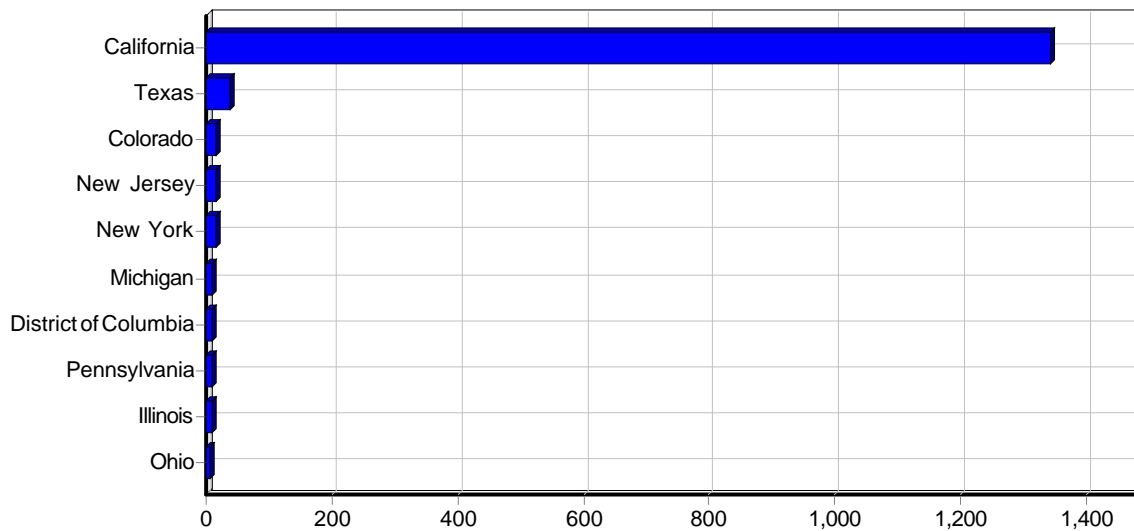


				( )
1	php	10,347	0	115,072
2	jpg	9,728	31	250,661
3	doc	5,513	14	146,050
4	css	3,177	1	4,836
5	gif	2,155	0	584
6	js	482	0	486
7	pdf	134	30	10,654
8	html	74	0	5
		<b>31,610</b>	<b>76</b>	<b>528,351</b>



				%	( )
1		3,584	1,645	48.07%	54,373
2		27,008	1,319	38.54%	401,109
3		409	73	2.13%	5,991
4		1,078	60	1.75%	17,121
5		1,301	54	1.58%	10,232
6		455	35	1.02%	8,399
7		29	28	0.82%	281
8		29	22	0.64%	323
9		20	20	0.58%	283
10		37	14	0.41%	462
11		305	14	0.41%	6,698
12		22	10	0.29%	441
13		596	10	0.29%	7,782
14		69	8	0.23%	815

15		257	8	0.23%	6,274
16		7	7	0.20%	28
17		185	7	0.20%	3,906
18		8	7	0.20%	76
19		60	6	0.18%	579
20		54	6	0.18%	898
21		7	6	0.18%	38
22		5	5	0.15%	27
23		6	4	0.12%	19
24		13	4	0.12%	652
25		4	4	0.12%	90
26		24	4	0.12%	516
27		3	3	0.09%	112
28		163	3	0.09%	1,115
29		3	3	0.09%	28
30		17	3	0.09%	226
31		3	3	0.09%	16
32		3	3	0.09%	16
33		2	2	0.06%	34
34		2	2	0.06%	34
35		2	2	0.06%	332
36		2	2	0.06%	28
37		2	2	0.06%	11
38		1	1	0.03%	5
39		2	1	0.03%	10
40		1	1	0.03%	5
41		1	1	0.03%	5
42		1	1	0.03%	28
43		1	1	0.03%	5
44		1	1	0.03%	28
45		1	1	0.03%	28
46		1	1	0.03%	28
47		1	1	0.03%	5
48		1	1	0.03%	28
49		1	1	0.03%	5
50		1	1	0.03%	5
		<b>35,788</b>	<b>3,421</b>	<b>99.97%</b>	<b>529,574</b>
		<b>35,789</b>	<b>3,422</b>	<b>100.00%</b>	<b>529,580</b>



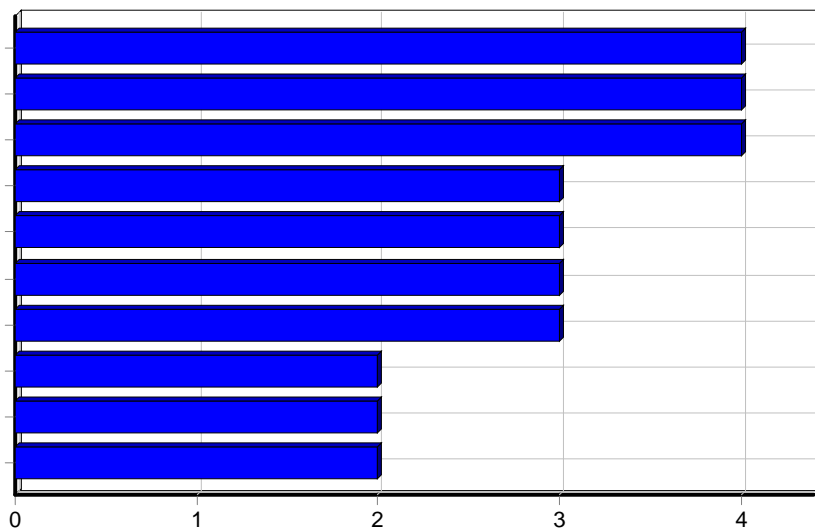
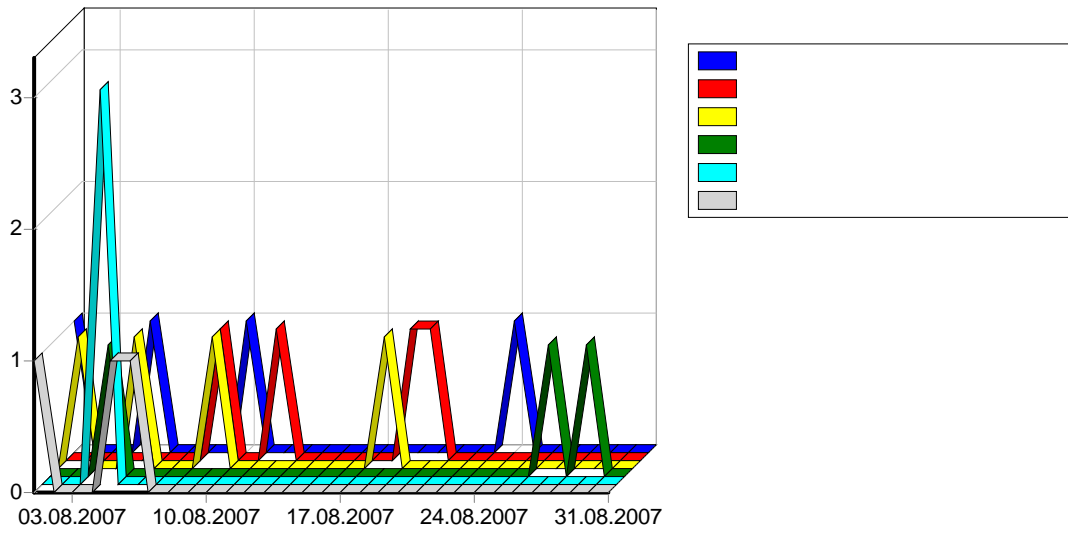
				( )
1	California	2,894	1,342	43,269
2	Texas	51	38	621
3	Colorado	35	17	334
4	New Jersey	16	16	28
5	New York	201	16	4,688
6	Michigan	10	10	78
7	District of Columbia	32	10	526
8	Pennsylvania	10	10	124
9	Illinois	10	8	139
10	Ohio	7	7	61
11	Georgia	21	7	141
12	Washington	9	6	85
13	Indiana	5	5	27
14	Florida	6	5	44
15	Oregon	11	3	137
16	Connecticut	3	3	62
17	North Carolina	4	3	21
18	Wisconsin	3	3	16
19	Oklahoma	2	2	11
20	New Mexico	2	2	56
21	Kansas	2	2	34
22	Tennessee	2	2	11
23	Arizona	2	2	34
24	Virginia	2	2	34
25	Missouri	2	2	11
26	Nebraska	2	2	34
27	Massachusetts	5	2	213
28	South Carolina	1	1	28
29	Iowa	1	1	28
30	Arkansas	1	1	5
31	Alabama	1	1	5
32	Maine	1	1	5
33	New Hampshire	1	1	28

34	Mississippi	1	1	5
35	Maryland	1	1	28
		<b>3,357</b>	<b>1,535</b>	<b>50,985</b>

				( )
1	Sunnyvale, California,	1,109	950	15,243
2	Moscow,	20,978	932	312,947
3	Mountain View, California,	1,647	375	24,819
4	Saint Petersburg,	955	70	10,820
5	Novosibirsk,	1,829	56	20,913
6	Kiev,	485	42	6,314
7	Leipzig,	35	35	565
8	San Antonio, Texas,	24	21	128
9	Tokyo,	277	19	5,053
10	Kaluga,	36	19	123
11	Sayreville, New Jersey,	15	15	0
12	Littleton, Colorado,	15	15	164
13	Irkutsk,	153	14	2,544
14	Chita,	214	14	2,851
15	Togliatti,	12	12	256
16	Oslo,	200	11	3,937
17	Penza,	48	11	540
18	Krasnoyarsk,	196	10	2,965
19	Washington, District of Columbia,	32	10	526
20	Vladivostok,	211	9	4,512
21	Kemerovo,	59	9	1,966
22	Stockholm,	8	8	67
23	Tallinn,	185	7	3,906
24	Minsk,	65	7	680
25	Lenin,	10	7	104
26	Halmstad,	14	7	76
27	Yekaterinburg,	53	6	417
28	Paris,	25	6	216
29	Riga,	54	6	898
30	Amur,	171	5	4,723
31	New York, New York,	190	5	4,489
32	Amsterdam,	17	5	402
33	Rostov,	11	5	426
34	Tomsk,	153	5	863
35	Cupertino, California,	5	5	98
36	Almaty,	58	4	453
37	Chelyabinsk,	22	4	407
38	Santiago,	4	4	22
39	Frisco, Texas,	14	4	381
40	Krasnodar,	10	4	561
41	Ochakovo,	4	4	114
42	Toronto,	4	4	90
43	Houston, Texas,	4	4	51
44	Lipetsk,	4	4	191
45	Columbus, Ohio,	4	4	45

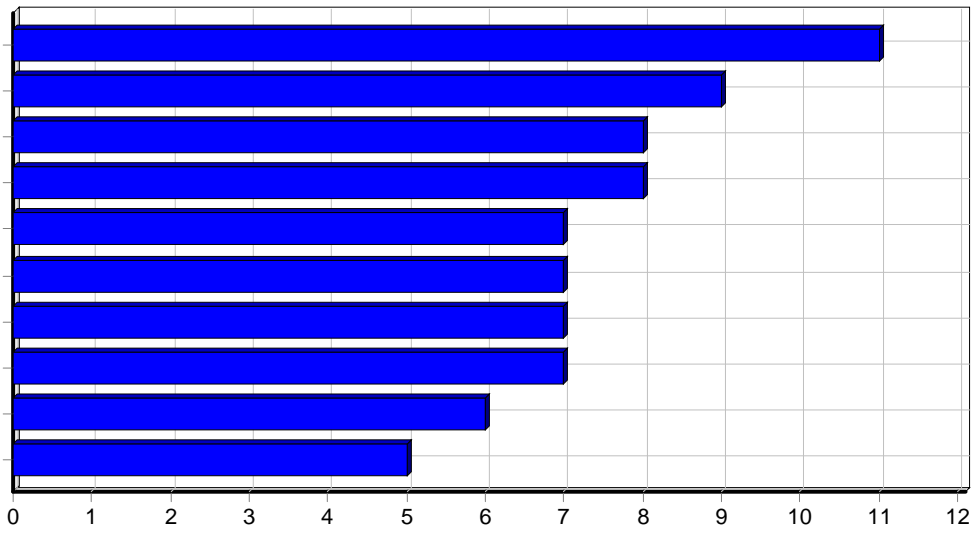
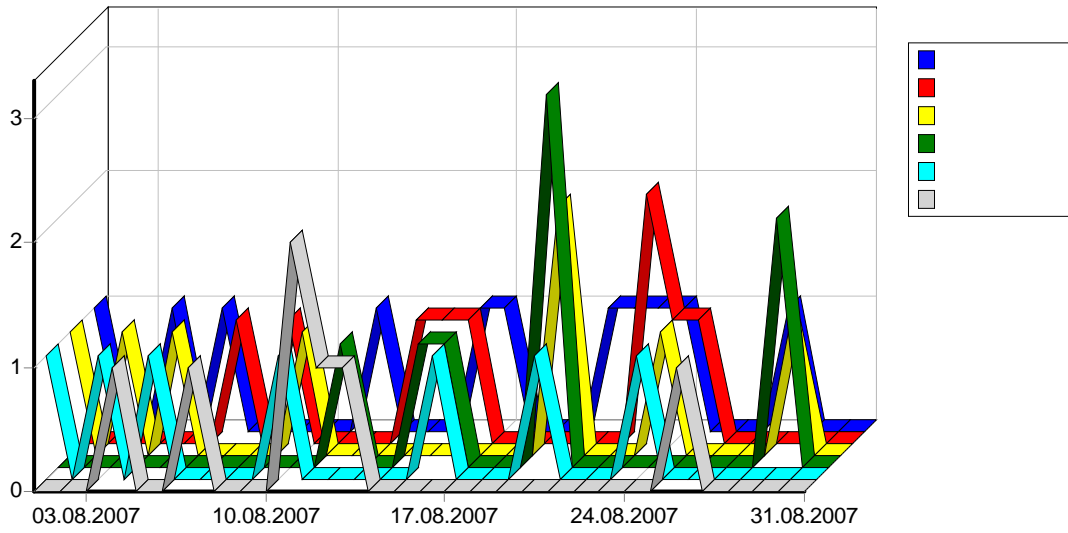
46	Odessa,	293	4	5,108
47	Cologne,	4	4	100
48	Saratov,	5	4	297
49	Buenos Aires,	5	4	27
50	Karlskrona,	4	4	116
		<b>29,930</b>	<b>2,793</b>	<b>442,539</b>
		<b>33,287</b>	<b>3,168</b>	<b>501,897</b>





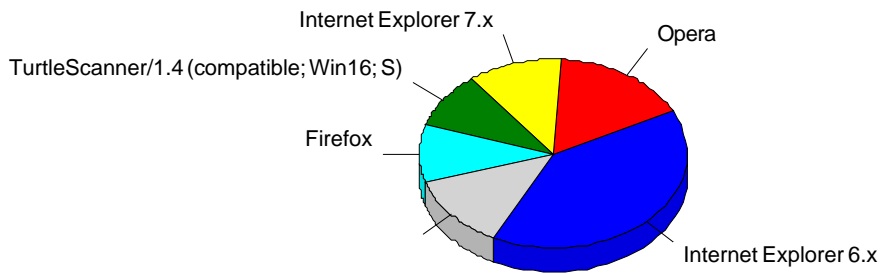
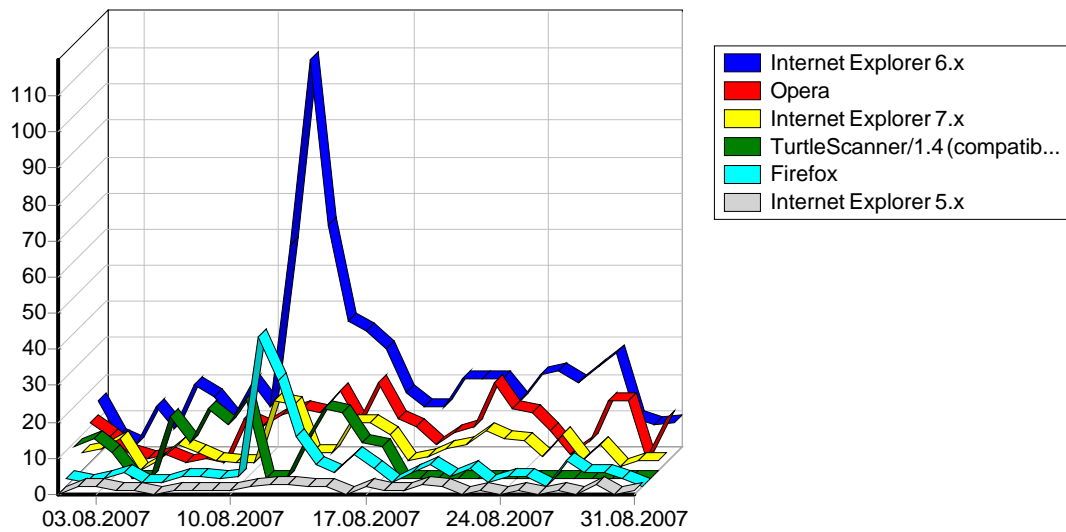
1		4
2		4
3		4
4		3
5		3
6		3
7		3
8		2
9		2
10		2
11	"	2
12		2
13		2
14		2

15	www.epov.ru	2
16		2
17		1
18		1
19		1
20		1
21	05.08.2007	1
22		1
23		1
24		1
25	-	1
26		1
27		1
28		1
29		1
30		1
31		1
32		1
33		1
34	.	1
35		1
36		1
37		1
38	-	1
39		1
40		1
41		1
42		1
43		1
44		1
45		1
46		1
47	.	1
48		1
49		1
50		1
		<b>76</b>
		<b>237</b>



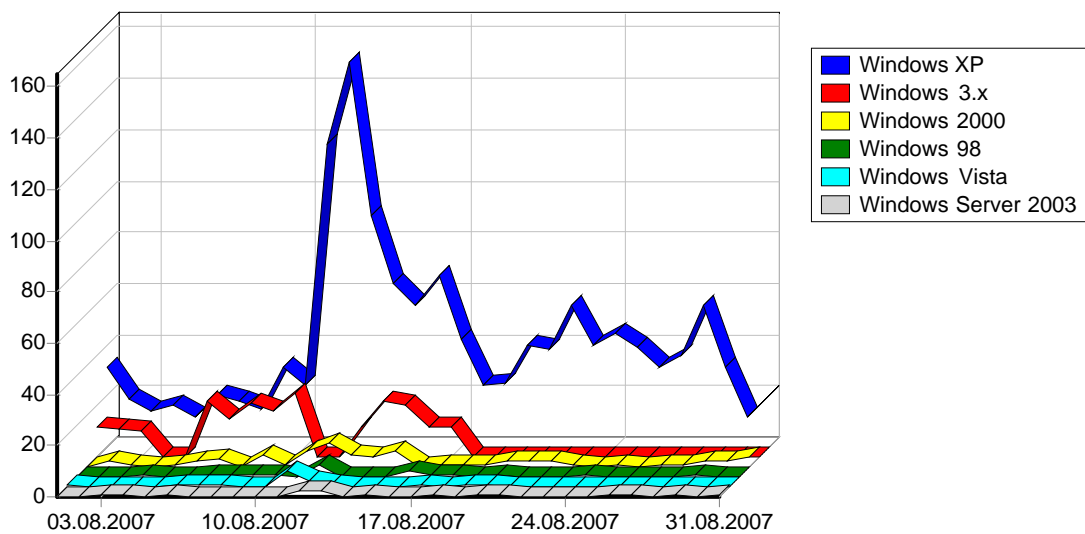
1		11
2		9
3		8
4		8
5		7
6		7
7		7
8		7
9		6
10		5
11		5
12		5
13		5
14		4
15		4
16		4

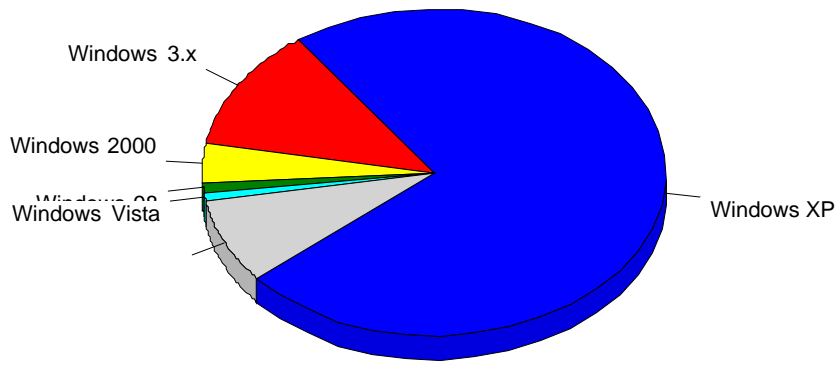
17		4
18		4
19		3
20		3
21		3
22		3
23		3
24		3
25		3
26		3
27		3
28		3
29		3
30		3
31		3
32	.	3
33		3
34		3
35		3
36		3
37		2
38		2
39		2
40		2
41		2
42		2
43		2
44		2
45		2
46		2
47		2
48	' °	2
49		2
50		2
		<b>192</b>
		<b>597</b>



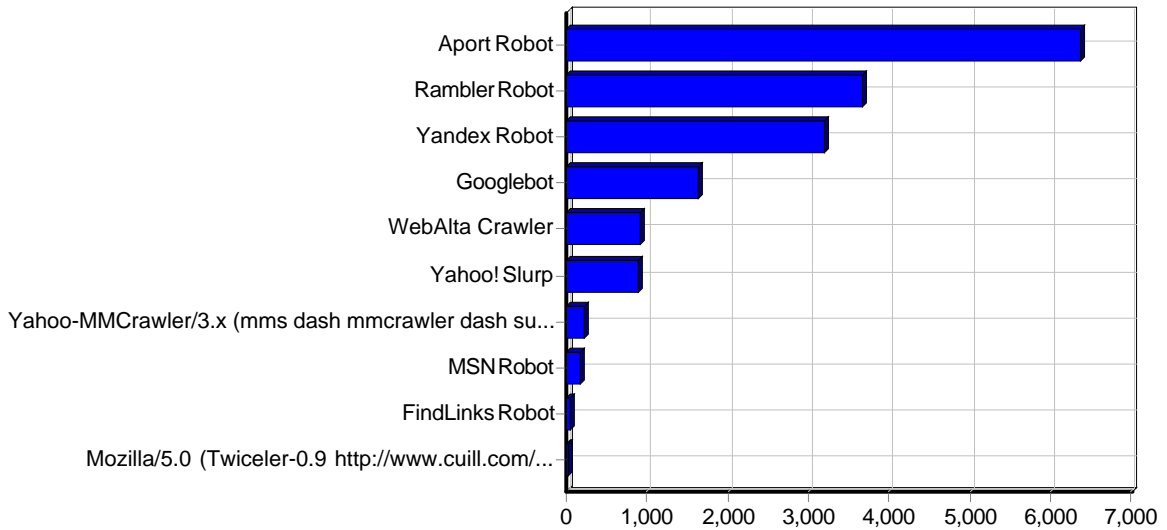
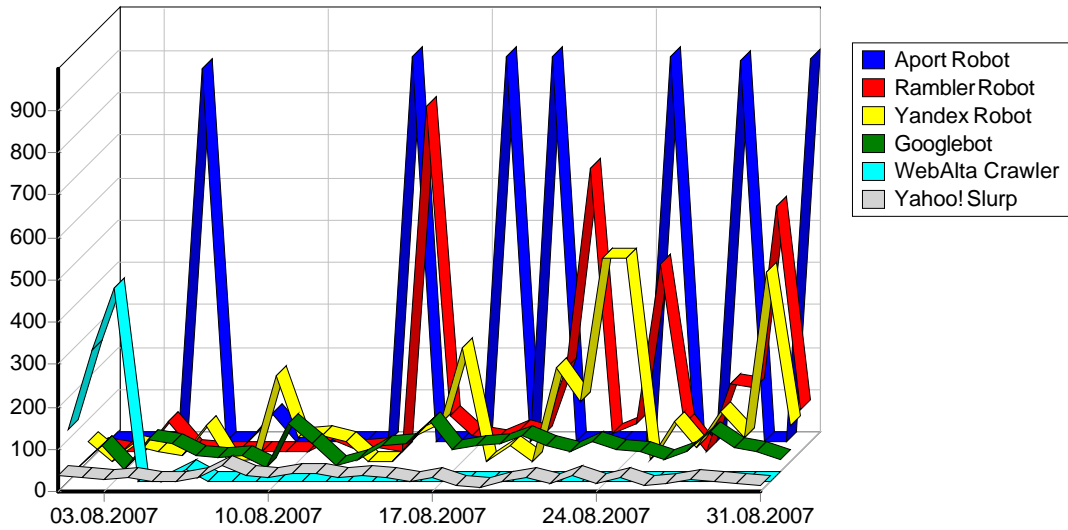
				%
1	Internet Explorer 6.x	9,780	716	39.80%
2	Opera	1,155	302	16.79%
3	Internet Explorer 7.x	2,338	204	11.34%
4	TurtleScanner/1.4 (compatible; Win16; S)	238	176	9.78%
5	Firefox	1,576	173	9.62%
6	Internet Explorer 5.x	321	38	2.11%
7	TurtleScanner/1.5 (compatible; Win16; S)	51	36	2.00%
8	Microsoft Data Access Internet Publishing Provider Protocol Discovery	84	29	1.61%
9	Microsoft Office Protocol Discovery	33	29	1.61%
10	Safari	75	12	0.67%
11	;	31	10	0.56%
12	Konqueror	7	7	0.39%
13		187	7	0.39%
14	Mozilla/5.0 (compatible; Google Desktop)	5	5	0.28%

15	Mozilla/3.0 (compatible; Indy Library)	5	5	0.28%
16	Microsoft-WebDAV-MiniRedir/5.1.2600	28	4	0.22%
17	compatible; MSIE 6.0; Windows NT 5.1	4	4	0.22%
18	Internet Explorer 4.x	13	4	0.22%
19	Mail.Ru/1.0	2,593	4	0.22%
20	WWW-Mechanize/1.24	3	3	0.17%
21	Mozilla	3	3	0.17%
22	Microsoft Office Existence Discovery	3	3	0.17%
23	Netscape 7.x	2	2	0.11%
24	webcollage/1.129	2	2	0.11%
25	PHP version tracker ( <a href="http://www.nexen.net/phpversion/bot.php">http://www.nexen.net/phpversion/bot.php</a> )	2	2	0.11%
26	Gecko/20050716 Thunderbird/1.0.6	6	2	0.11%
27	Netscape 5.x	2	2	0.11%
28	Download Master	2	1	0.06%
29	Avant Browser	1	1	0.06%
30	WasaBot 0.11 (+ <a href="http://www.wasalive.com/">http://www.wasalive.com/</a> )	1	1	0.06%
31	webcollage/1.133	1	1	0.06%
32	webcollage/1.135	1	1	0.06%
33	libwww-perl/5.803	1	1	0.06%
34	webcollage/1.127	1	1	0.06%
35	Netscape 8.x	2	1	0.06%
36	OmniWeb	4	1	0.06%
37	Mozilla/4.0 (compatible;)	7	1	0.06%
38	Internet Explorer/6.0	2	1	0.06%
39	Gecko/20060206 Songbird/0.1	4	1	0.06%
40	Gecko/20031016 K-Meleon/0.8	2	1	0.06%
41	Gecko/20060516 Thunderbird/1.5.0.4	1	1	0.06%
42	Runpad Shell Downloader	5	1	0.06%
		<b>18,582</b>	<b>1,799</b>	<b>100.00%</b>





				%
1	Windows XP	13,486	1,276	73.84%
2	Windows 3.x	289	212	12.27%
3		3,201	80	4.63%
4	Windows 2000	707	66	3.82%
5	Windows 98	206	17	0.98%
6	Windows Vista	164	16	0.93%
7	Windows Server 2003	211	15	0.87%
8	Mac OS	101	15	0.87%
9	Linux	13	13	0.75%
10	Windows NT	16	7	0.41%
11	Windows 95	16	4	0.23%
12	FreeBSD	42	3	0.17%
13	Windows ME	127	2	0.12%
14	Windows CE	3	2	0.12%
		<b>18,582</b>	<b>1,728</b>	<b>100.00%</b>



1	Aport Robot	6,381
2	RamblerRobot	3,664
3	Yandex Robot	3,202
4	Googlebot	1,646
5	WebAlta Crawler	919
6	Yahoo! Slurp	896
7	Yahoo-MMCrawler/3.x (mms dash mmcrawler dash support at yahoo dash inc dot com)	213
8	MSNRobot	178
9	FindLinks Robot	38
10	Mozilla/5.0 (Twiceler-0.9 http://www.cuill.com/twiceler/robot.html)	22
11	Entireweb Robot	14
12	Gigablast Robot	6
13	CazoodleBot/CazoodleBot-0.1 (CazoodleBot Crawler; http://www.cazoodle.com/cazoodlebot; cazoodlebot@cazoodle.com)	4
14	Yeti/0.01i (nhn/1noon, yetibot@naver.com, check robots.txt daily and follow it)	4
15	Search4free Robot	4
16	Perl LWP	4



17	Picsearch Robot	4
18	MSIE Crawler	4
19	Alexa Robot	2
20	AskJeeves Robot	2
		<b>17,207</b>