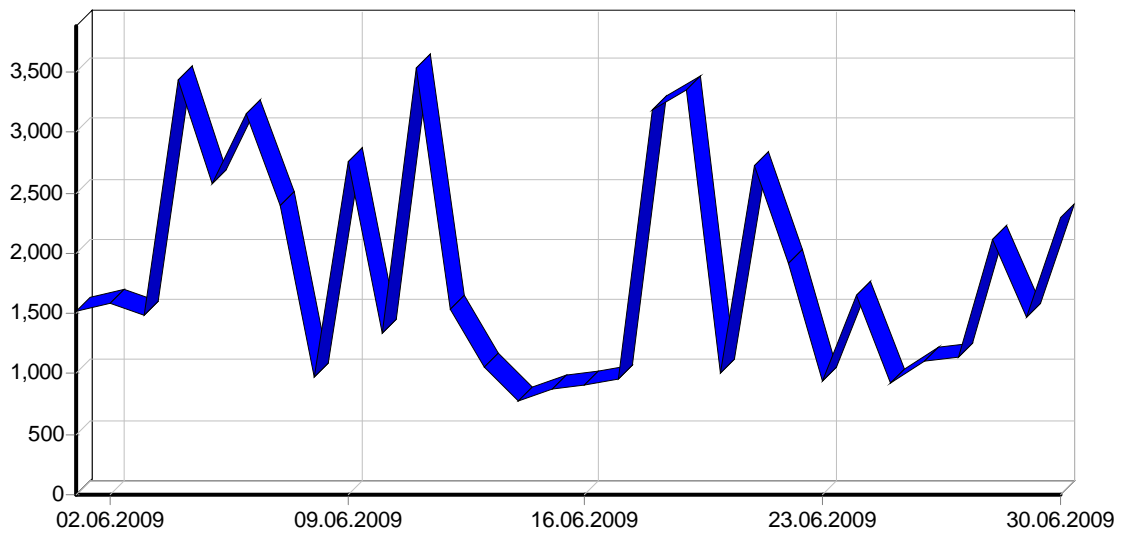
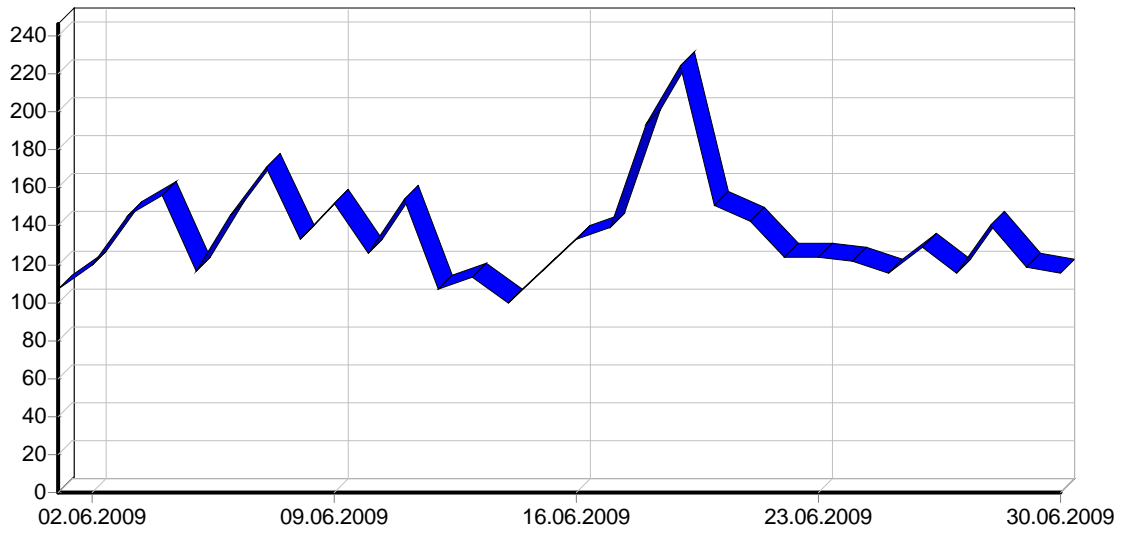
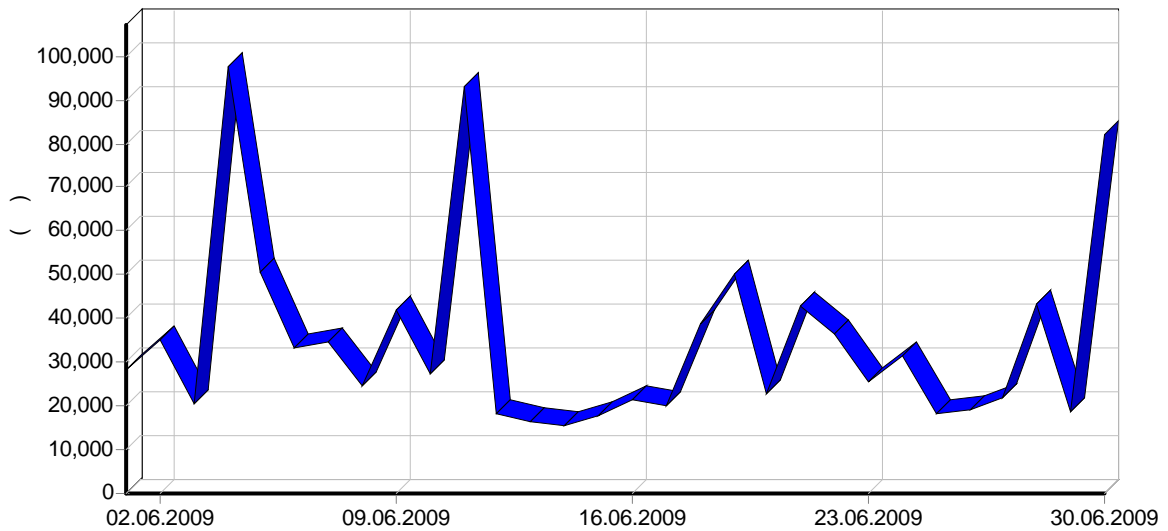
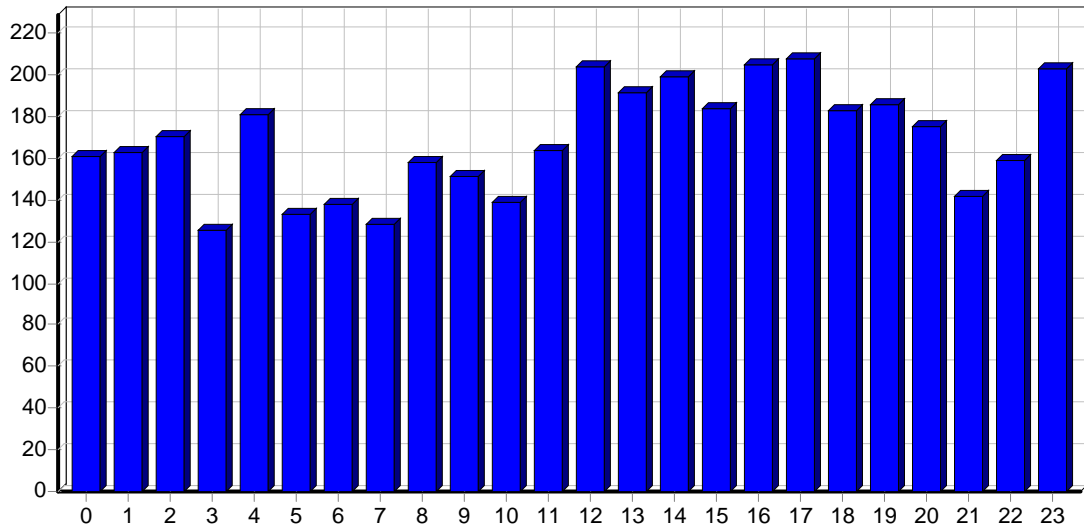


| | |
|-----|---------|
| | |
| | 54,763 |
| | 1,825 |
| | 13.52 |
| | 10,173 |
| | 2,663 |
| | |
| | 16,711 |
| | 557 |
| | 4.13 |
| | |
| | 4,050 |
| | 135 |
| IP- | 1,419 |
| | |
| | 1023.69 |
| | 34.12 |
| | 19.14 |
| | 258.83 |

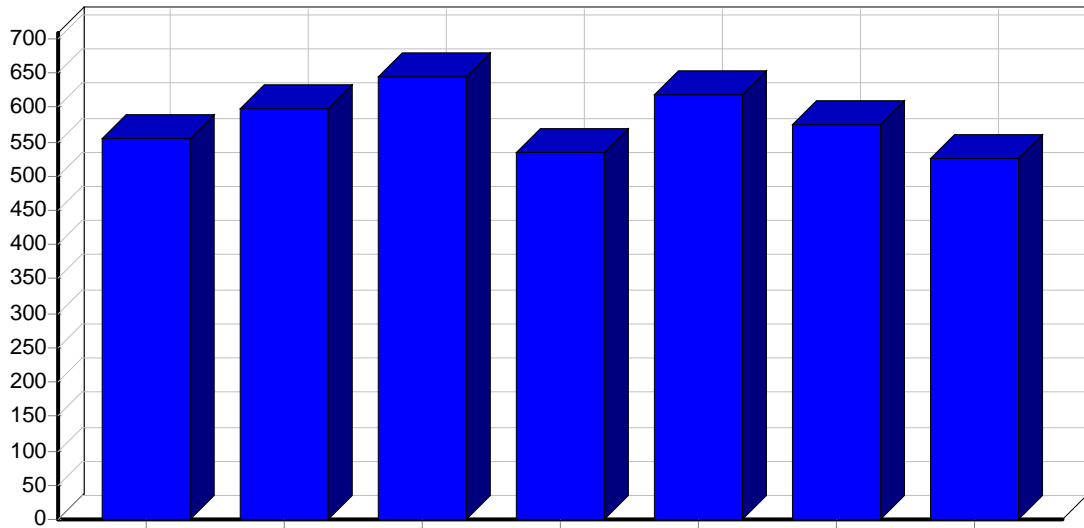




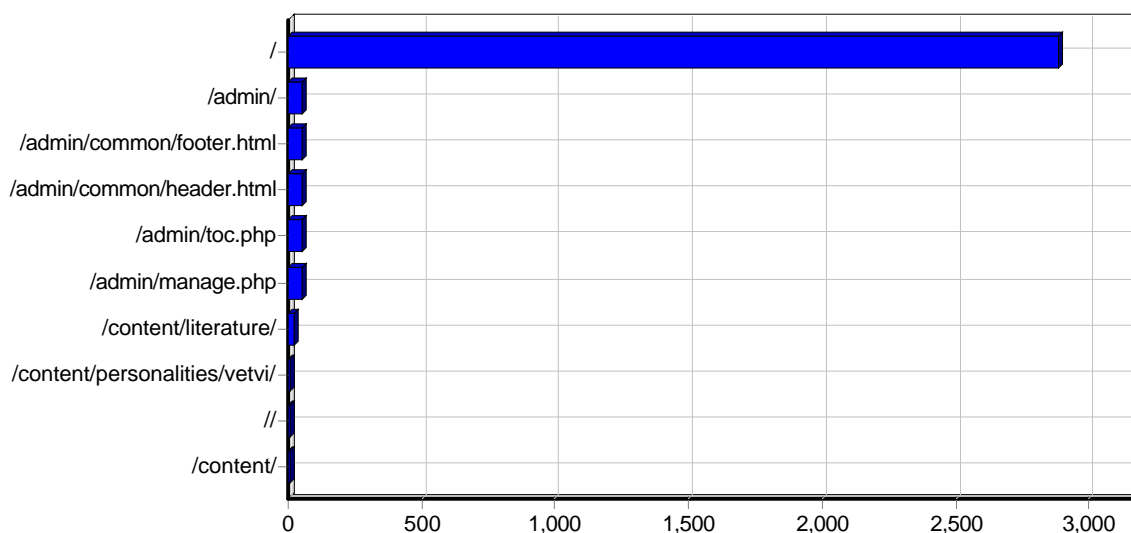
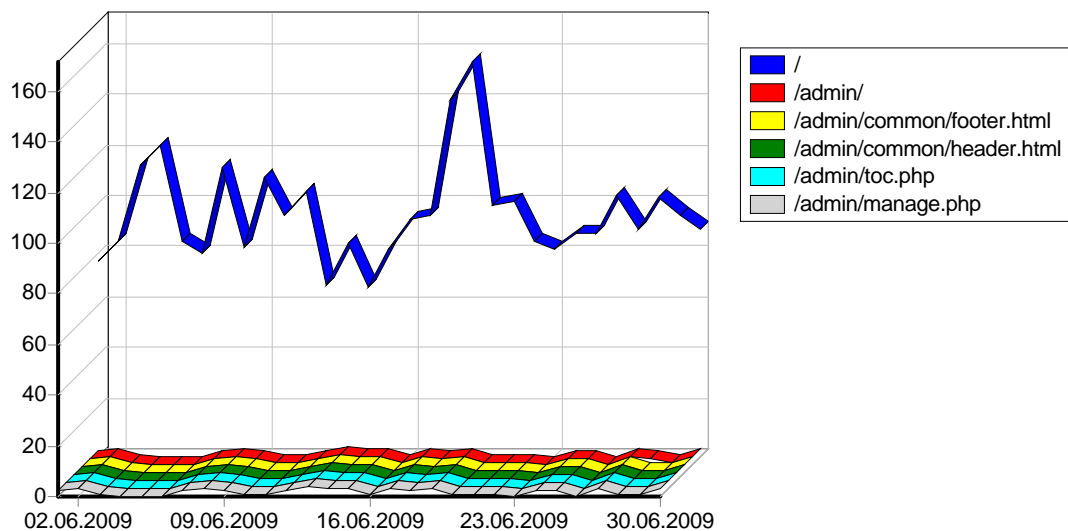
| | | | | | () |
|------------|---------------|---------------|--------------|--------------|------------------|
| 01.06.2009 | 1,525 | 519 | 107 | 04:26 | 28,365 |
| 02.06.2009 | 1,589 | 427 | 120 | 04:31 | 35,050 |
| 03.06.2009 | 1,486 | 570 | 146 | 14:24 | 20,743 |
| 04.06.2009 | 3,436 | 1,069 | 156 | 12:37 | 97,400 |
| 05.06.2009 | 2,581 | 645 | 116 | 07:04 | 50,513 |
| 06.06.2009 | 3,153 | 464 | 146 | 14:28 | 33,276 |
| 07.06.2009 | 2,403 | 598 | 171 | 06:00 | 34,867 |
| 08.06.2009 | 972 | 223 | 133 | 12:08 | 24,491 |
| 09.06.2009 | 2,763 | 788 | 152 | 08:02 | 42,118 |
| 10.06.2009 | 1,336 | 402 | 126 | 06:17 | 27,372 |
| 11.06.2009 | 3,531 | 1,100 | 154 | 08:24 | 93,031 |
| 12.06.2009 | 1,545 | 311 | 107 | 05:35 | 18,445 |
| 13.06.2009 | 1,054 | 289 | 113 | 05:27 | 16,373 |
| 14.06.2009 | 772 | 132 | 100 | 05:47 | 15,510 |
| 15.06.2009 | 877 | 245 | 116 | 06:19 | 17,774 |
| 16.06.2009 | 901 | 209 | 133 | 10:37 | 21,275 |
| 17.06.2009 | 958 | 351 | 139 | 11:31 | 19,876 |
| 18.06.2009 | 3,187 | 1,201 | 194 | 07:10 | 38,690 |
| 19.06.2009 | 3,362 | 1,259 | 224 | 07:05 | 50,088 |
| 20.06.2009 | 1,015 | 522 | 151 | 15:25 | 22,994 |
| 21.06.2009 | 2,735 | 1,090 | 143 | 23:03 | 42,974 |
| 22.06.2009 | 1,912 | 574 | 124 | 10:00 | 36,689 |
| 23.06.2009 | 948 | 169 | 124 | 16:59 | 25,321 |
| 24.06.2009 | 1,661 | 720 | 122 | 10:20 | 31,605 |
| 25.06.2009 | 922 | 342 | 115 | 06:54 | 18,073 |
| 26.06.2009 | 1,108 | 348 | 129 | 11:03 | 18,970 |
| 27.06.2009 | 1,141 | 530 | 115 | 17:33 | 22,007 |
| 28.06.2009 | 2,114 | 651 | 141 | 10:42 | 43,332 |
| 29.06.2009 | 1,471 | 464 | 118 | 12:39 | 18,775 |
| 30.06.2009 | 2,305 | 499 | 115 | 08:12 | 82,251 |
| | 54,763 | 16,711 | 4,050 | 10:06 | 1,048,261 |



| | | | () |
|---------------|---------------|--------------|------------------|
| 00:00 - 00:59 | 3,335 | 161 | 52,881 |
| 01:00 - 01:59 | 2,004 | 163 | 34,442 |
| 02:00 - 02:59 | 2,485 | 170 | 38,389 |
| 03:00 - 03:59 | 1,734 | 125 | 26,214 |
| 04:00 - 04:59 | 1,219 | 181 | 22,798 |
| 05:00 - 05:59 | 1,459 | 133 | 25,251 |
| 06:00 - 06:59 | 1,631 | 138 | 26,410 |
| 07:00 - 07:59 | 1,771 | 128 | 25,672 |
| 08:00 - 08:59 | 2,952 | 158 | 80,098 |
| 09:00 - 09:59 | 1,907 | 151 | 29,506 |
| 10:00 - 10:59 | 2,000 | 139 | 27,414 |
| 11:00 - 11:59 | 2,736 | 164 | 46,580 |
| 12:00 - 12:59 | 2,451 | 204 | 46,192 |
| 13:00 - 13:59 | 2,125 | 191 | 44,780 |
| 14:00 - 14:59 | 2,219 | 199 | 34,453 |
| 15:00 - 15:59 | 2,578 | 184 | 38,663 |
| 16:00 - 16:59 | 2,151 | 205 | 37,639 |
| 17:00 - 17:59 | 2,777 | 208 | 84,899 |
| 18:00 - 18:59 | 3,069 | 183 | 104,069 |
| 19:00 - 19:59 | 2,477 | 186 | 48,939 |
| 20:00 - 20:59 | 2,382 | 175 | 42,307 |
| 21:00 - 21:59 | 1,716 | 142 | 27,758 |
| 22:00 - 22:59 | 2,086 | 159 | 41,821 |
| 23:00 - 23:59 | 3,499 | 203 | 61,075 |
| | 54,763 | 4,050 | 1,048,261 |

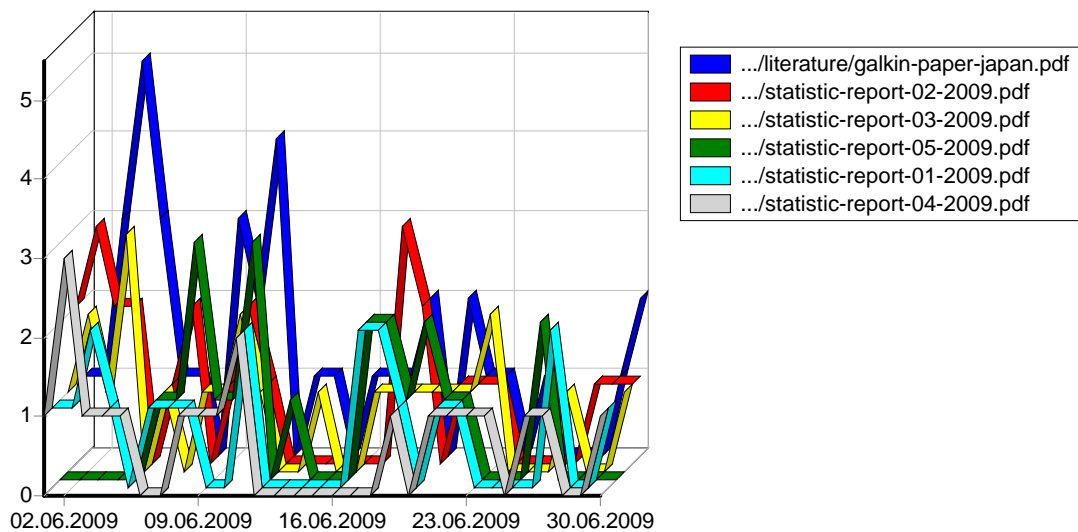


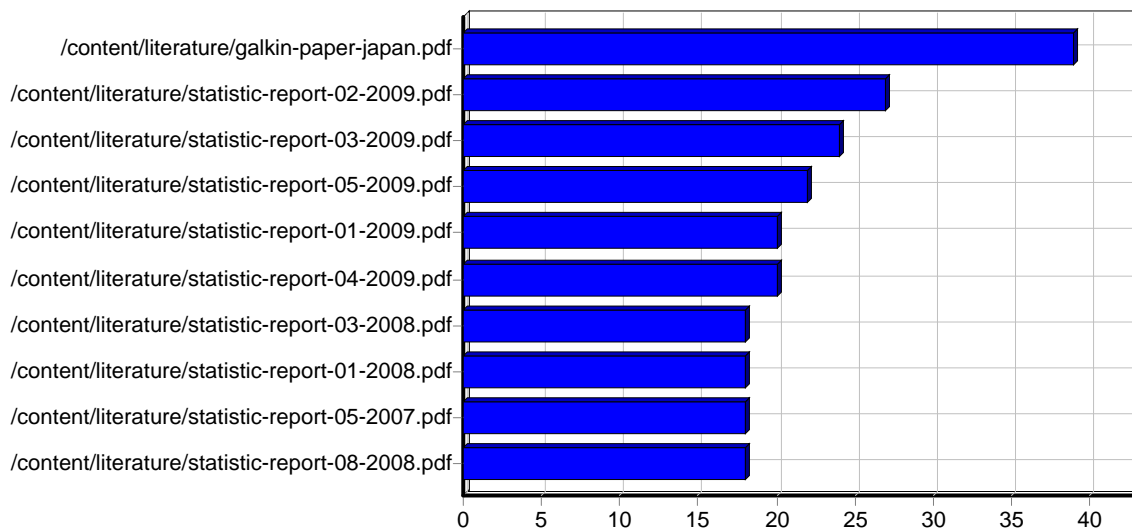
| | | | () |
|--|---------------|--------------|------------------|
| | 8,024 | 555 | 136,684 |
| | 6,757 | 598 | 126,097 |
| | 8,506 | 644 | 206,016 |
| | 5,441 | 533 | 99,597 |
| | 11,076 | 619 | 247,195 |
| | 8,596 | 576 | 138,018 |
| | 6,363 | 525 | 94,651 |
| | 54,763 | 4,050 | 1,048,261 |



| | | | | | () |
|----|---|--------|---|-------|---------|
| 1 | http://www.epov.ru/ | 16,043 | 0 | 2,882 | 267,398 |
| 2 | http://www.epov.ru/admin/ | 95 | 0 | 52 | 41 |
| 3 | http://www.epov.ru/admin/common/footer.html | 51 | 0 | 51 | 9 |
| 4 | http://www.epov.ru/admin/common/header.html | 51 | 0 | 51 | 7 |
| 5 | http://www.epov.ru/admin/toc.php | 53 | 0 | 51 | 56 |
| 6 | http://www.epov.ru/admin/manage.php | 163 | 0 | 51 | 33,475 |
| 7 | http://www.epov.ru/content/literature/ | 22 | 0 | 22 | 0 |
| 8 | http://www.epov.ru/content/personalities/vetvi/ | 7 | 0 | 7 | 0 |
| 9 | http://www.epov.ru// | 13 | 0 | 6 | 80 |
| 10 | http://www.epov.ru/content/ | 12 | 0 | 5 | 3 |
| 11 | http://www.epov.ru/content/personalities/vetvi-yasash/ | 4 | 0 | 4 | 0 |
| 12 | http://www.epov.ru/content/personalities/3/ | 2 | 0 | 2 | 0 |
| 13 | http://www.epov.ru/content/personalities/5/ | 2 | 0 | 2 | 0 |

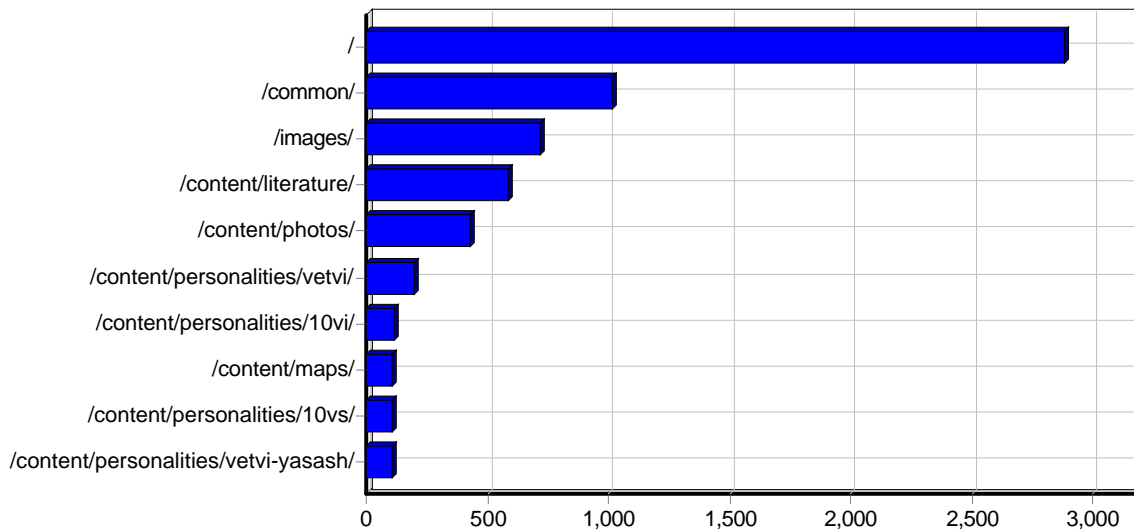
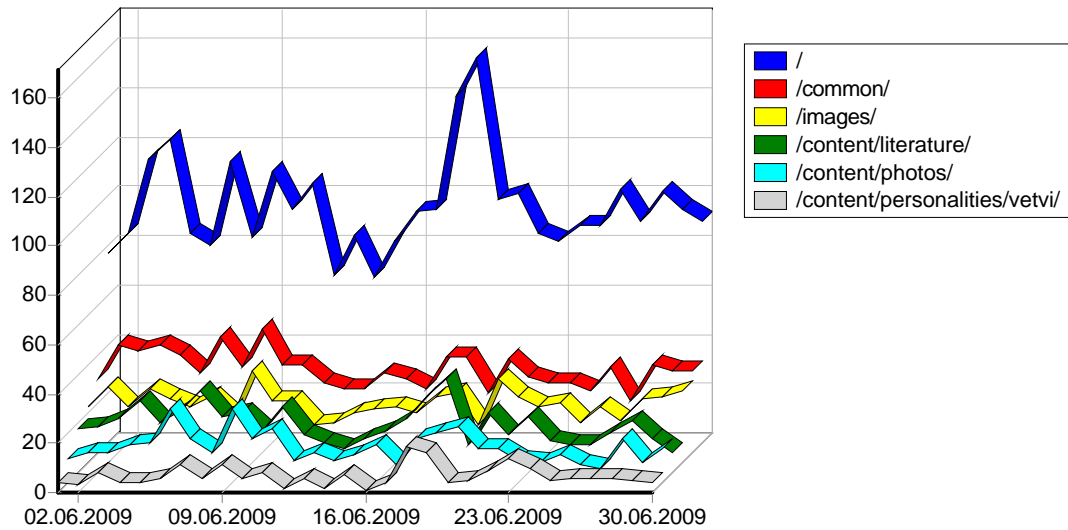
| | | | | | |
|----|---|---------------|----------|---|----------------|
| 14 | http://www.epov.ru/content/personalities/0/ | 2 | 0 | 2 | 0 |
| 15 | http://www.epov.ru/content/personalities/8vn/ | 1 | 0 | 1 | 0 |
| 16 | http://www.epov.ru/content/personalities/8vp/ | 1 | 0 | 1 | 0 |
| 17 | http://www.epov.ru/content/personalities/8sm/ | 1 | 0 | 1 | 0 |
| 18 | http://www.epov.ru/content/personalities/8sn/ | 1 | 0 | 1 | 0 |
| 19 | http://www.epov.ru/content/personalities/8vi/ | 1 | 0 | 1 | 0 |
| 20 | http://www.epov.ru/ | 1 | 0 | 1 | 10 |
| 21 | http://www.epov.ru http://www.epov.ru/ | 3 | 0 | 1 | 409 |
| 22 | http://www.epov.ru// | 2 | 0 | 1 | 16 |
| 23 | http://www.epov.ru/content/personalities/9sn/ | 1 | 0 | 1 | 0 |
| 24 | http://www.epov.ru/content/personalities/9vi/ | 1 | 0 | 1 | 0 |
| 25 | http://www.epov.ru/content/personalities/4/ | 1 | 0 | 1 | 0 |
| 26 | http://www.epov.ru/// | 2 | 0 | 1 | 15 |
| 27 | http://www.epov.ru/content/personalities/2/ | 1 | 0 | 1 | 0 |
| 28 | http://www.epov.ru/content/personalities/1/ | 1 | 0 | 1 | 0 |
| 29 | http://www.epov.ru/content/personalities/10vi/ | 1 | 0 | 1 | 0 |
| 30 | http://www.epov.ru/content/personalities/7sn/ | 1 | 0 | 1 | 0 |
| 31 | http://www.epov.ru/content/personalities/7ss/ | 1 | 0 | 1 | 0 |
| 32 | http://www.epov.ru/content/personalities/7sm/ | 1 | 0 | 1 | 0 |
| 33 | http://www.epov.ru/content/personalities/6/ | 1 | 0 | 1 | 0 |
| 34 | http://www.epov.ru/content/personalities/7/ | 1 | 0 | 1 | 0 |
| | | 16,544 | 0 | - | 301,524 |





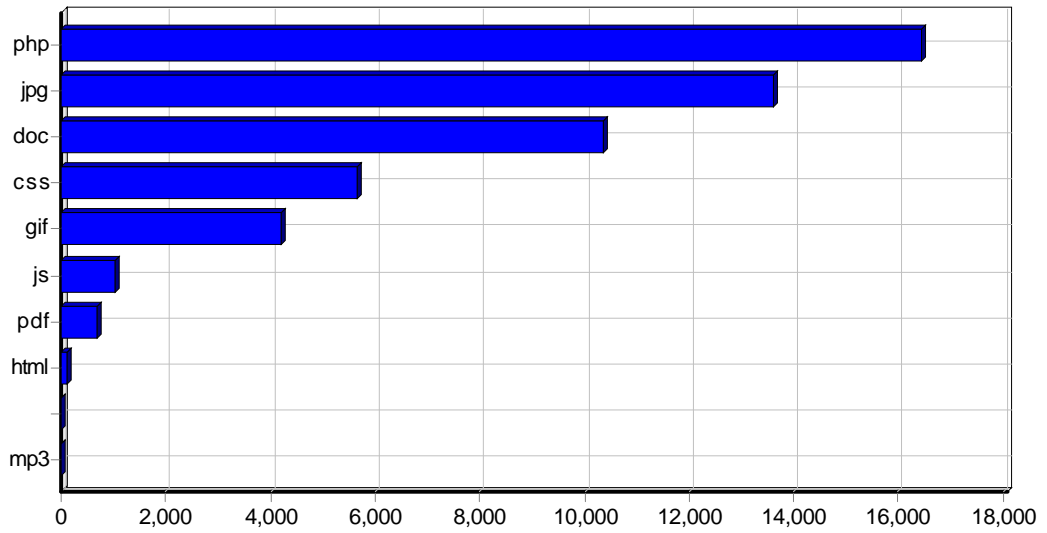
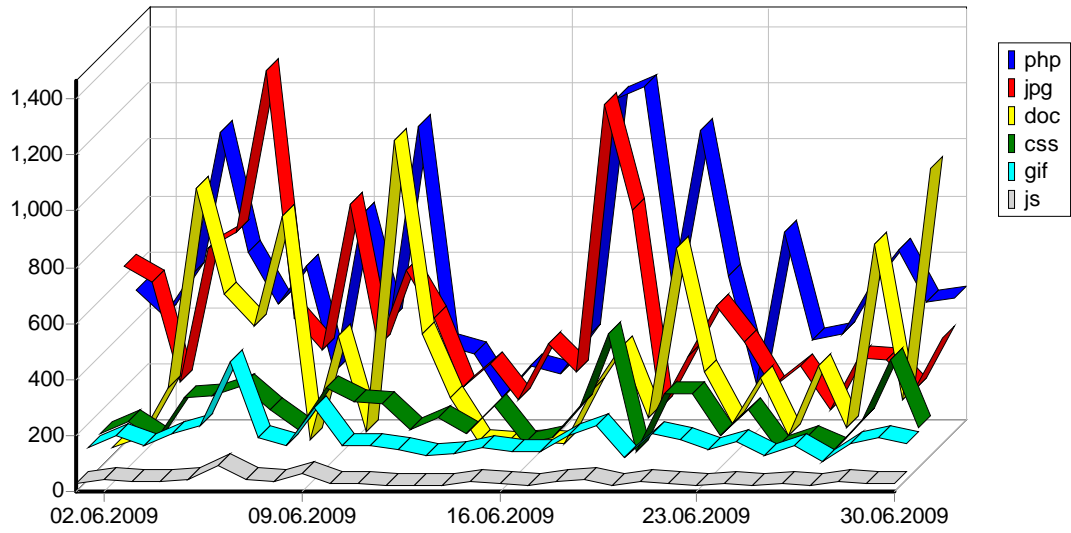
| | | | | | () |
|----|---|----|----|----|--------|
| 1 | http://www.epov.ru/content/literature/galkin-paper-japan.pdf | 98 | 58 | 39 | 10,915 |
| 2 | http://www.epov.ru/content/literature/statistic-report-02-2009.pdf | 27 | 0 | 27 | 1,381 |
| 3 | http://www.epov.ru/content/literature/statistic-report-03-2009.pdf | 24 | 1 | 24 | 1,997 |
| 4 | http://www.epov.ru/content/literature/statistic-report-05-2009.pdf | 24 | 1 | 22 | 3,016 |
| 5 | http://www.epov.ru/content/literature/statistic-report-01-2009.pdf | 20 | 0 | 20 | 1,548 |
| 6 | http://www.epov.ru/content/literature/statistic-report-04-2009.pdf | 20 | 0 | 20 | 1,502 |
| 7 | http://www.epov.ru/content/literature/statistic-report-03-2008.pdf | 19 | 0 | 18 | 1,296 |
| 8 | http://www.epov.ru/content/literature/statistic-report-01-2008.pdf | 18 | 0 | 18 | 1,959 |
| 9 | http://www.epov.ru/content/literature/statistic-report-05-2007.pdf | 18 | 0 | 18 | 858 |
| 10 | http://www.epov.ru/content/literature/statistic-report-08-2008.pdf | 18 | 0 | 18 | 1,308 |
| 11 | http://www.epov.ru/content/literature/statistic-report-06-2008.pdf | 18 | 0 | 18 | 1,480 |
| 12 | http://www.epov.ru/content/literature/statistic-report.pdf | 18 | 0 | 18 | 1,883 |
| 13 | http://www.epov.ru/content/literature/statistic-report-12-2008.pdf | 17 | 0 | 17 | 1,236 |
| 14 | http://www.epov.ru/content/literature/statistic-report-10-2007.pdf | 17 | 0 | 17 | 1,086 |
| 15 | http://www.epov.ru/content/literature/statistic-report-08-2007.pdf | 17 | 0 | 17 | 1,103 |
| 16 | http://www.epov.ru/content/literature/statistic-report-10-2008.pdf | 17 | 0 | 17 | 1,268 |
| 17 | http://www.epov.ru/content/literature/statistic-report-02-2008.pdf | 18 | 1 | 17 | 1,376 |
| 18 | http://www.epov.ru/content/literature/statistic-report-11-2008.pdf | 17 | 0 | 17 | 1,226 |
| 19 | http://www.epov.ru/content/literature/statistic-report-11-2007.pdf | 16 | 0 | 16 | 928 |
| 20 | http://www.epov.ru/content/literature/statistic-report-07-2008.pdf | 16 | 0 | 16 | 1,382 |
| 21 | http://www.epov.ru/content/literature/statistic-report-09-2007.pdf | 16 | 0 | 16 | 1,039 |
| 22 | http://www.epov.ru/content/literature/astrahantsev-1.pdf | 17 | 2 | 15 | 12,200 |
| 23 | http://www.epov.ru/content/literature/astrahantsev-10.pdf | 15 | 0 | 15 | 2,174 |
| 24 | http://www.epov.ru/content/literature/astrahantsev-5.pdf | 15 | 0 | 15 | 22,442 |
| 25 | http://www.epov.ru/content/literature/statistic-report-09-2008.pdf | 17 | 1 | 15 | 1,323 |
| 26 | http://www.epov.ru/content/literature/statistic-report-12-2007.pdf | 15 | 0 | 15 | 714 |
| 27 | http://www.epov.ru/content/literature/statistic-report-05-2008.pdf | 14 | 0 | 14 | 1,080 |
| 28 | http://www.epov.ru/content/literature/astrahantsev-8.pdf | 14 | 0 | 14 | 2,624 |
| 29 | http://www.epov.ru/content/literature/astrahantsev-2.pdf | 13 | 0 | 13 | 20,881 |
| 30 | http://www.epov.ru/content/literature/astrahantsev-3.pdf | 13 | 0 | 13 | 12,875 |
| 31 | http://www.epov.ru/content/literature/achik-tash.pdf | 13 | 0 | 13 | 20,296 |
| 32 | http://www.epov.ru/content/literature/statistic-report-07-2007.pdf | 13 | 0 | 13 | 992 |
| 33 | http://www.epov.ru/content/literature/statistic-report-06-2007.pdf | 13 | 0 | 13 | 413 |
| 34 | http://www.epov.ru/content/literature/astrahantsev-7.pdf | 12 | 0 | 12 | 10,061 |

| | | | | | |
|----|---|------------|-----------|----|----------------|
| 35 | http://www.epov.ru/content/literature/astrahantsev-6.pdf | 12 | 0 | 12 | 9,982 |
| 36 | http://www.epov.ru/content/literature/astrahantsev-4.pdf | 12 | 0 | 12 | 23,760 |
| 37 | http://www.epov.ru/content/literature/astrahantsev-9.pdf | 11 | 0 | 11 | 3,202 |
| | | 692 | 64 | - | 184,825 |

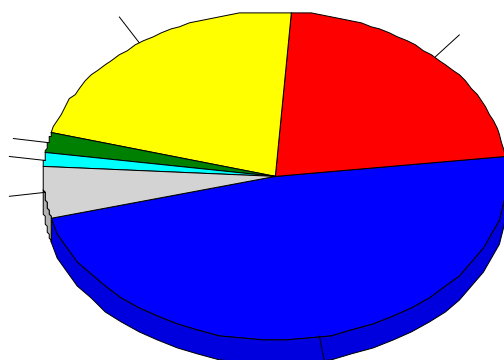
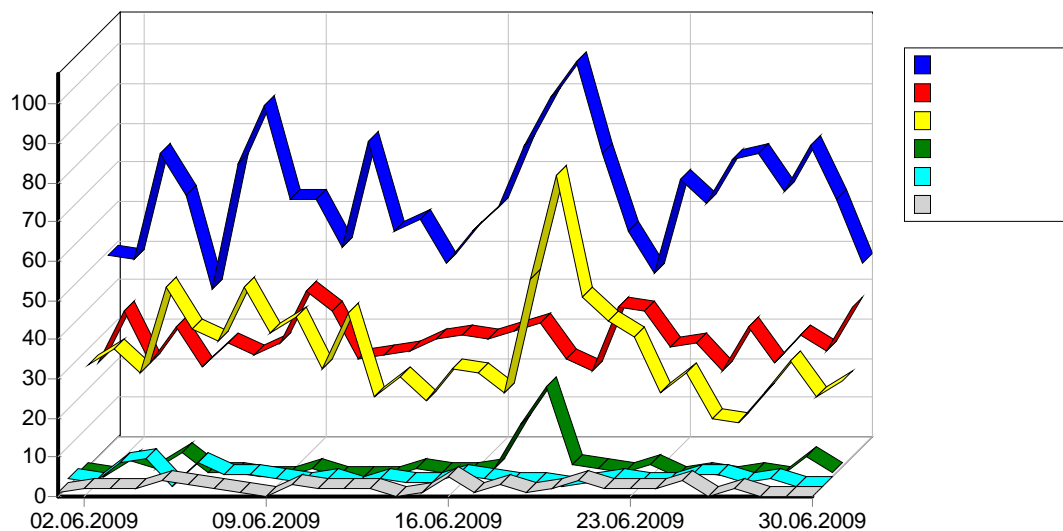


| | | | | | () |
|----|---|--------|----|-------|---------|
| 1 | http://www.epov.ru/ | 16,044 | 0 | 2,882 | 267,409 |
| 2 | http://www.epov.ru/common/ | 6,437 | 0 | 1,013 | 7,635 |
| 3 | http://www.epov.ru/images/ | 7,199 | 10 | 721 | 42,609 |
| 4 | http://www.epov.ru/content/literature/ | 2,086 | 74 | 583 | 296,603 |
| 5 | http://www.epov.ru/content/photos/ | 9,644 | 8 | 428 | 254,084 |
| 6 | http://www.epov.ru/content/personalities/vetvi/ | 1,440 | 0 | 202 | 22,712 |
| 7 | http://www.epov.ru/content/personalities/10vi/ | 998 | 0 | 113 | 11,758 |
| 8 | http://www.epov.ru/content/maps/ | 617 | 0 | 111 | 31,822 |
| 9 | http://www.epov.ru/content/personalities/10vs/ | 1,322 | 0 | 107 | 16,450 |
| 10 | http://www.epov.ru/content/personalities/vetvi-yasash/ | 551 | 0 | 104 | 9,938 |

| | | | | | |
|----|--|---------------|-----------|----|------------------|
| 11 | http://www.epov.ru/content/personalities/10sn/ | 475 | 0 | 78 | 5,122 |
| 12 | http://www.epov.ru/content/personalities/10vn/ | 726 | 0 | 72 | 7,514 |
| 13 | http://www.epov.ru/content/personalities/10vp/ | 706 | 0 | 61 | 7,514 |
| 14 | http://www.epov.ru/admin/ | 311 | 0 | 52 | 33,572 |
| 15 | http://www.epov.ru/admin/common/ | 354 | 0 | 51 | 137 |
| 16 | http://www.epov.ru/admin/images/ | 51 | 0 | 51 | 4 |
| 17 | http://www.epov.ru/content/personalities/9vi/ | 345 | 0 | 48 | 3,515 |
| 18 | http://www.epov.ru/content/personalities/9vs/ | 291 | 0 | 39 | 2,956 |
| 19 | http://www.epov.ru/content/personalities/10sm/ | 179 | 0 | 35 | 1,739 |
| 20 | http://www.epov.ru/content/personalities/10vm/ | 176 | 0 | 34 | 1,925 |
| 21 | http://www.epov.ru/content/personalities/3/ | 140 | 0 | 32 | 1,525 |
| 22 | http://www.epov.ru/content/personalities/7/ | 159 | 0 | 30 | 1,531 |
| 23 | http://www.epov.ru/content/personalities/9sn/ | 189 | 0 | 30 | 1,927 |
| 24 | http://www.epov.ru/content/personalities/9vn/ | 239 | 0 | 30 | 2,213 |
| 25 | http://www.epov.ru/content/personalities/5/ | 108 | 0 | 30 | 1,105 |
| 26 | http://www.epov.ru/content/personalities/6/ | 162 | 0 | 30 | 1,657 |
| 27 | http://www.epov.ru/content/personalities/9vp/ | 152 | 0 | 26 | 1,576 |
| 28 | http://www.epov.ru/content/personalities/7ss/ | 64 | 0 | 25 | 510 |
| 29 | http://www.epov.ru/content/personalities/8sn/ | 92 | 0 | 24 | 935 |
| 30 | http://www.epov.ru/content/personalities/8vn/ | 83 | 0 | 23 | 853 |
| 31 | http://www.epov.ru/content/personalities/7sn/ | 75 | 0 | 23 | 702 |
| 32 | http://www.epov.ru/content/personalities/4/ | 131 | 0 | 23 | 1,306 |
| 33 | http://www.epov.ru/content/personalities/7sm/ | 60 | 0 | 21 | 682 |
| 34 | http://www.epov.ru/content/personalities/9sm/ | 85 | 0 | 21 | 753 |
| 35 | http://www.epov.ru/content/personalities/2/ | 42 | 0 | 19 | 467 |
| 36 | http://www.epov.ru/content/personalities/8vs/ | 53 | 0 | 17 | 576 |
| 37 | http://www.epov.ru/content/personalities/8vi/ | 48 | 0 | 16 | 489 |
| 38 | http://www.epov.ru/content/personalities/8vp/ | 37 | 0 | 15 | 346 |
| 39 | http://www.epov.ru/content/personalities/1/ | 20 | 0 | 15 | 160 |
| 40 | http://www.epov.ru/content/personalities/0/ | 22 | 1 | 15 | 258 |
| 41 | http://www.epov.ru/content/personalities/8sm/ | 34 | 0 | 13 | 282 |
| 42 | http://www.epov.ru/content/personalities/9vm/ | 18 | 0 | 10 | 162 |
| 43 | http://www.epov.ru/content/personalities/8vm/ | 9 | 0 | 9 | 100 |
| 44 | http://www.epov.ru/content/broshura/ | 84 | 0 | 8 | 1,585 |
| 45 | http://www.epov.ru/ | 14 | 0 | 6 | 91 |
| 46 | http://www.epov.ru/content/ | 12 | 0 | 5 | 3 |
| 47 | http://www.epov.ru/content/literature/ | 2 | 0 | 2 | 211 |
| 48 | http://www.epov.ru/ | 3 | 0 | 1 | 27 |
| 49 | http://www.epov.ruhttp://www.epov.ru/ | 3 | 0 | 1 | 409 |
| 50 | http://www.epov.ru/. | 1 | 0 | 1 | 10 |
| | | 52,093 | 93 | - | 1,047,483 |
| | | 52,100 | 93 | - | 1,047,525 |

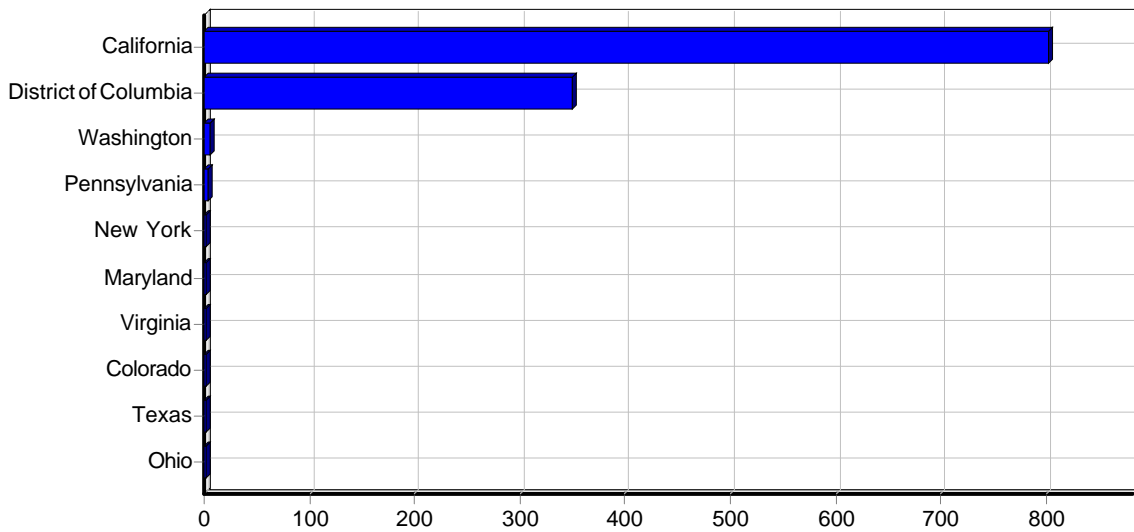


| | | | | () |
|----|------|---------------|-----------|------------------|
| 1 | php | 16,442 | 0 | 301,507 |
| 2 | jpg | 13,620 | 18 | 336,580 |
| 3 | doc | 10,348 | 11 | 208,857 |
| 4 | css | 5,668 | 0 | 6,545 |
| 5 | gif | 4,194 | 0 | 1,133 |
| 6 | js | 1,024 | 0 | 1,215 |
| 7 | pdf | 692 | 64 | 184,825 |
| 8 | html | 102 | 0 | 17 |
| 9 | | 5 | 0 | 54 |
| 10 | mp3 | 5 | 0 | 6,788 |
| | | 52,100 | 93 | 1,047,525 |



| | | | | % | () |
|----|--|--------|-------|--------|---------|
| 1 | | 6,490 | 1,934 | 47.75% | 155,890 |
| 2 | | 22,481 | 893 | 22.05% | 339,759 |
| 3 | | 22,021 | 888 | 21.93% | 468,630 |
| 4 | | 206 | 76 | 1.88% | 5,826 |
| 5 | | 436 | 58 | 1.43% | 11,026 |
| 6 | | 717 | 55 | 1.36% | 13,470 |
| 7 | | 860 | 20 | 0.49% | 14,473 |
| 8 | | 251 | 15 | 0.37% | 9,797 |
| 9 | | 54 | 12 | 0.30% | 4,094 |
| 10 | | 466 | 8 | 0.20% | 8,209 |
| 11 | | 136 | 6 | 0.15% | 2,051 |
| 12 | | 8 | 5 | 0.12% | 545 |
| 13 | | 46 | 5 | 0.12% | 515 |
| 14 | | 14 | 5 | 0.12% | 868 |

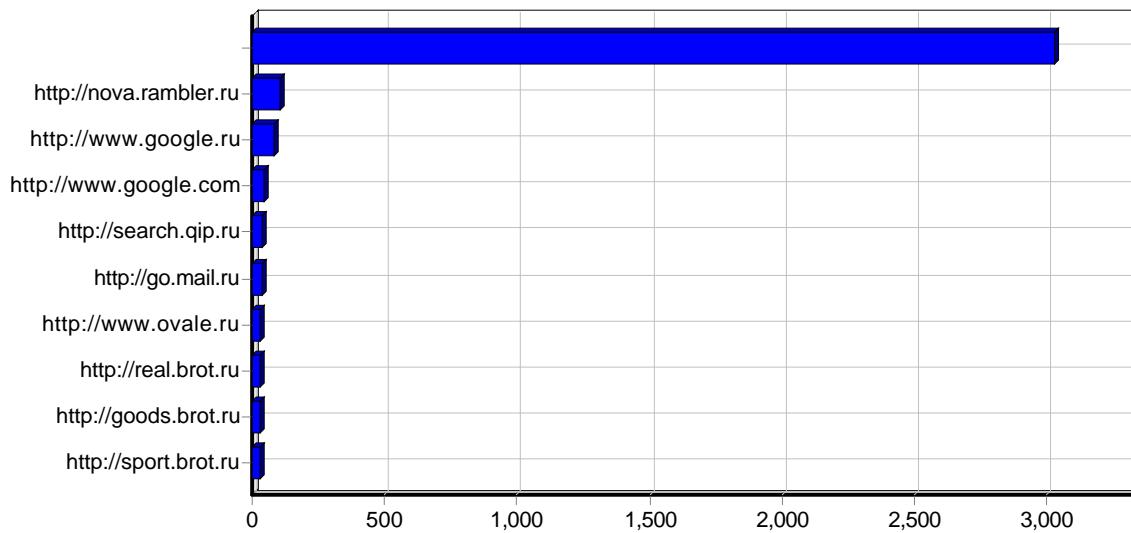
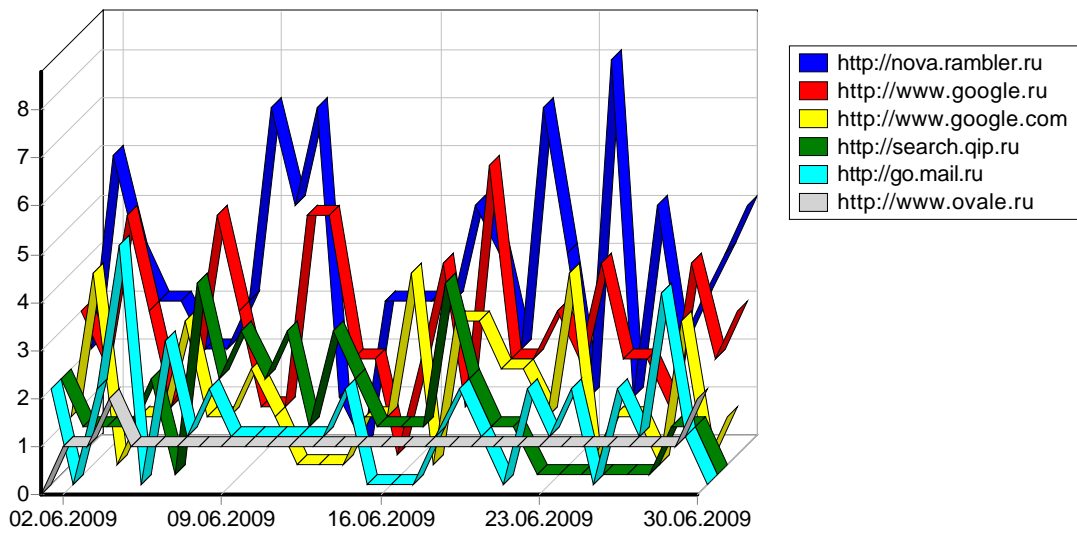
| | | | | | |
|----|--|---------------|--------------|----------------|------------------|
| 15 | | 10 | 5 | 0.12% | 481 |
| 16 | | 23 | 5 | 0.12% | 748 |
| 17 | | 9 | 5 | 0.12% | 251 |
| 18 | | 41 | 4 | 0.10% | 1,589 |
| 19 | | 8 | 4 | 0.10% | 460 |
| 20 | | 4 | 4 | 0.10% | 21 |
| 21 | | 15 | 3 | 0.07% | 288 |
| 22 | | 31 | 3 | 0.07% | 366 |
| 23 | | 57 | 3 | 0.07% | 1,306 |
| 24 | | 30 | 3 | 0.07% | 604 |
| 25 | | 16 | 3 | 0.07% | 339 |
| 26 | | 77 | 2 | 0.05% | 970 |
| 27 | | 21 | 2 | 0.05% | 143 |
| 28 | | 39 | 2 | 0.05% | 808 |
| 29 | | 5 | 2 | 0.05% | 414 |
| 30 | | 17 | 2 | 0.05% | 305 |
| 31 | | 109 | 2 | 0.05% | 2,873 |
| 32 | | 14 | 2 | 0.05% | 87 |
| 33 | | 3 | 2 | 0.05% | 16 |
| 34 | | 1 | 1 | 0.02% | 28 |
| 35 | | 2 | 1 | 0.02% | 10 |
| 36 | | 1 | 1 | 0.02% | 5 |
| 37 | | 14 | 1 | 0.02% | 174 |
| 38 | | 1 | 1 | 0.02% | 5 |
| 39 | | 15 | 1 | 0.02% | 87 |
| 40 | | 1 | 1 | 0.02% | 5 |
| 41 | | 1 | 1 | 0.02% | 5 |
| 42 | | 3 | 1 | 0.02% | 403 |
| 43 | | 6 | 1 | 0.02% | 38 |
| 44 | | 1 | 1 | 0.02% | 196 |
| 45 | | 2 | 1 | 0.02% | 56 |
| | | 54,763 | 4,050 | 100.00% | 1,048,261 |



| | | | | () |
|----|----------------------|--------------|--------------|----------------|
| 1 | California | 3,270 | 802 | 110,298 |
| 2 | District of Columbia | 1,709 | 349 | 31,808 |
| 3 | Washington | 11 | 6 | 65 |
| 4 | Pennsylvania | 7 | 4 | 0 |
| 5 | New York | 6 | 2 | 32 |
| 6 | Maryland | 4 | 2 | 22 |
| 7 | Virginia | 1 | 1 | 10 |
| 8 | Colorado | 1 | 1 | 10 |
| 9 | Texas | 3 | 1 | 408 |
| 10 | Ohio | 1 | 1 | 161 |
| 11 | Georgia | 12 | 1 | 3 |
| | | 5,025 | 1,170 | 142,823 |

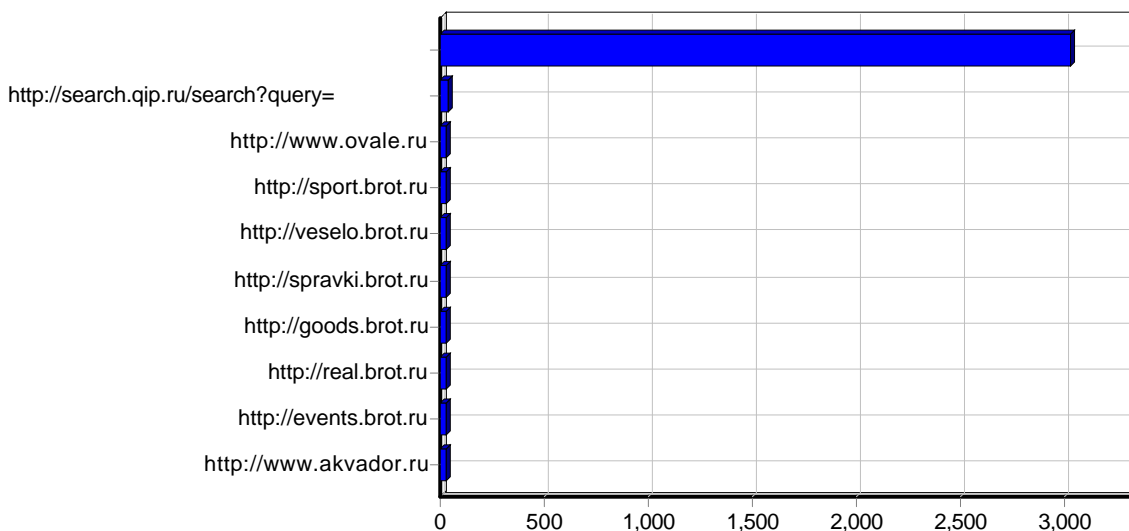
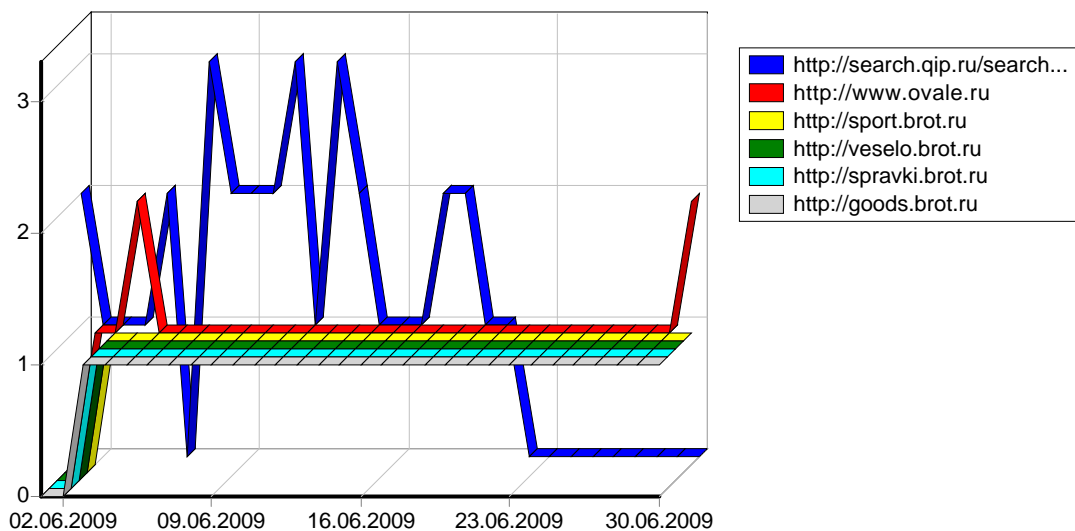
| | | | | () |
|----|-----------------------------------|--------|-----|---------|
| 1 | Mountain View, California, | 2,217 | 433 | 96,148 |
| 2 | Moscow, | 13,211 | 408 | 166,104 |
| 3 | Sunnyvale, California, | 1,045 | 365 | 14,104 |
| 4 | Washington, District of Columbia, | 1,709 | 349 | 31,808 |
| 5 | Novosibirsk, | 2,928 | 71 | 50,405 |
| 6 | Beijing, | 87 | 67 | 2,046 |
| 7 | Saint Petersburg, | 808 | 33 | 16,628 |
| 8 | Kiev, | 43 | 29 | 570 |
| 9 | Khabarovsk, | 269 | 23 | 5,276 |
| 10 | Kiev, | 282 | 23 | 7,163 |
| 11 | Erfurt, | 34 | 15 | 2,957 |
| 12 | Irkutsk, | 170 | 14 | 2,271 |
| 13 | Krasnoyarsk, | 722 | 11 | 17,893 |
| 14 | Chita, | 151 | 9 | 1,513 |
| 15 | Yekaterinburg, | 217 | 9 | 3,453 |
| 16 | Rome, | 143 | 7 | 8,086 |
| 17 | Rostov, | 226 | 7 | 5,816 |
| 18 | Rivne, | 104 | 6 | 1,531 |
| 19 | Frankfurt Am Main, | 38 | 6 | 845 |
| 20 | Vladivostok, | 259 | 6 | 5,581 |
| 21 | Minsk, | 46 | 5 | 515 |
| 22 | Krasnodar, | 62 | 5 | 700 |
| 23 | Oslo, | 23 | 5 | 748 |
| 24 | Riyadh, | 9 | 5 | 251 |
| 25 | Milano, | 57 | 5 | 1,178 |
| 26 | Z rich, | 10 | 5 | 481 |
| 27 | Perm, | 21 | 5 | 1,201 |
| 28 | Gro wallstadt, | 23 | 5 | 758 |
| 29 | Gunzenhausen, | 12 | 4 | 458 |
| 30 | Dniepropetrovsk, | 80 | 4 | 1,064 |
| 31 | Scranton, Pennsylvania, | 7 | 4 | 0 |
| 32 | Kazan, | 17 | 4 | 487 |
| 33 | Kharkov, | 85 | 4 | 1,402 |
| 34 | Bombay, | 41 | 4 | 1,589 |

| | | | | |
|----|--------------|---------------|--------------|----------------|
| 35 | Chelyabinsk, | 89 | 4 | 1,905 |
| 36 | Voronezh, | 26 | 4 | 628 |
| 37 | Novgorod, | 357 | 4 | 7,453 |
| 38 | Karlsruhe, | 44 | 4 | 503 |
| 39 | Amsterdam, | 8 | 4 | 460 |
| 40 | London, | 299 | 3 | 3,872 |
| 41 | Saratov, | 29 | 3 | 276 |
| 42 | Heidelberg, | 28 | 3 | 612 |
| 43 | S o Paulo, | 3 | 3 | 16 |
| 44 | Harrogate, | 165 | 3 | 4,325 |
| 45 | Kemerovo, | 51 | 3 | 779 |
| 46 | Angarsk, | 35 | 3 | 907 |
| 47 | Riga, | 30 | 3 | 604 |
| 48 | Berlin, | 3 | 3 | 0 |
| 49 | Yaroslavl, | 62 | 3 | 667 |
| 50 | Almaty, | 66 | 3 | 798 |
| | | 26,451 | 2,008 | 474,861 |
| | | 29,510 | 2,160 | 527,501 |



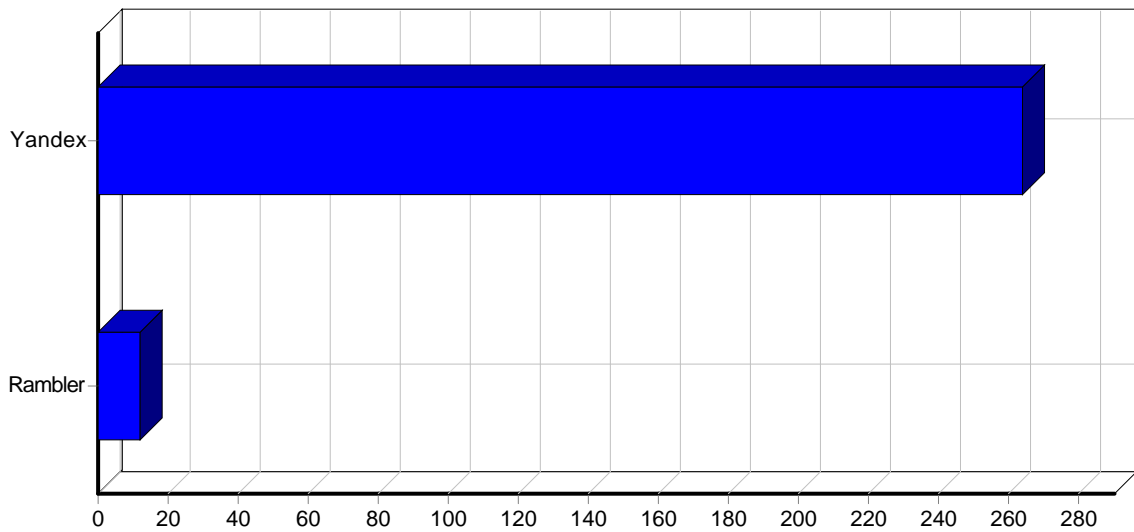
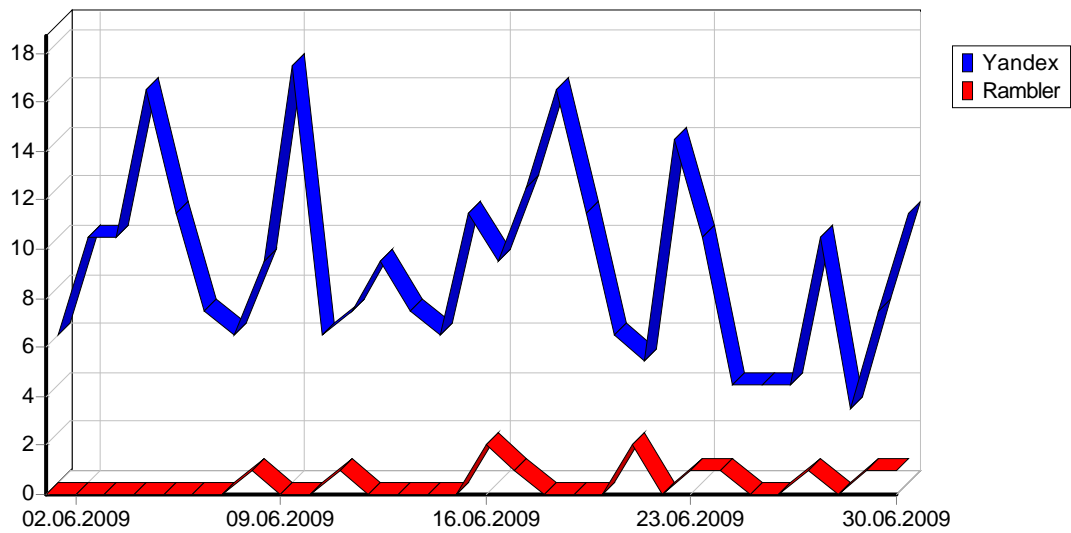
| 1 | | 3,026 |
|----|---|-------|
| 2 | http://nova.rambler.ru | 108 |
| 3 | http://www.google.ru | 80 |
| 4 | http://www.google.com | 42 |
| 5 | http://search.qip.ru | 40 |
| 6 | http://go.mail.ru | 39 |
| 7 | http://www.ovale.ru | 31 |
| 8 | http://real.brot.ru | 28 |
| 9 | http://goods.brot.ru | 28 |
| 10 | http://sport.brot.ru | 28 |
| 11 | http://www.akvador.ru | 28 |
| 12 | http://veselo.brot.ru | 28 |
| 13 | http://spravki.brot.ru | 28 |
| 14 | http://events.brot.ru | 28 |

| | | |
|----|---|--------------|
| 15 | http://www.bing.com | 12 |
| 16 | http://epov.ru | 8 |
| 17 | http://vkontakte.ru | 8 |
| 18 | http://www.predistoria.org | 7 |
| 19 | http://nigma.ru | 7 |
| 20 | http://forum.violity.kiev.ua | 7 |
| 21 | http://3-rome.livejournal.com | 6 |
| 22 | http://www.google.com.ua | 6 |
| 23 | http://whois.domaintools.com | 5 |
| 24 | http://search.yahoo.co.jp | 5 |
| 25 | http://images.google.ru | 5 |
| 26 | http://images.google.com | 5 |
| 27 | http://images.google.com.ua | 5 |
| 28 | http://www.nigma.ru | 4 |
| 29 | http://search.live.com | 4 |
| 30 | http://m.yandex.ru | 4 |
| 31 | http://www.google.com.au | 3 |
| 32 | http://www.metrocartochka.ru | 3 |
| 33 | http://www.krasner.ru | 3 |
| 34 | http://www.metrocartas.ru | 3 |
| 35 | http://www.metrocartaclienta.ru | 3 |
| 36 | http://forum.vgd.ru | 3 |
| 37 | http://ru.wikipedia.org | 3 |
| 38 | http://www.google.kz | 3 |
| 39 | http://win.mail.ru | 3 |
| 40 | http://http: | 3 |
| 41 | http://famili-v2.narod.ru | 3 |
| 42 | http://ltalk.ru | 3 |
| 43 | http://www.n-v.su | 3 |
| 44 | http://blog.sibmama.ru | 3 |
| 45 | http://66.102.11.132 | 2 |
| 46 | http://www.grabrss.ru | 2 |
| 47 | http://www.google.co.jp | 2 |
| 48 | http://www.google.com.by | 2 |
| 49 | http://zalizyaka.livejournal.com | 2 |
| 50 | http://www.metropropusk.ru | 2 |
| | | 3,714 |
| | | 3,769 |

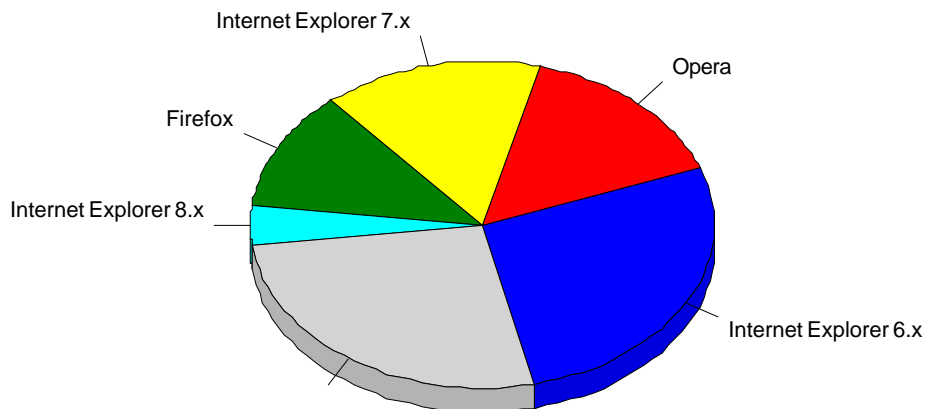
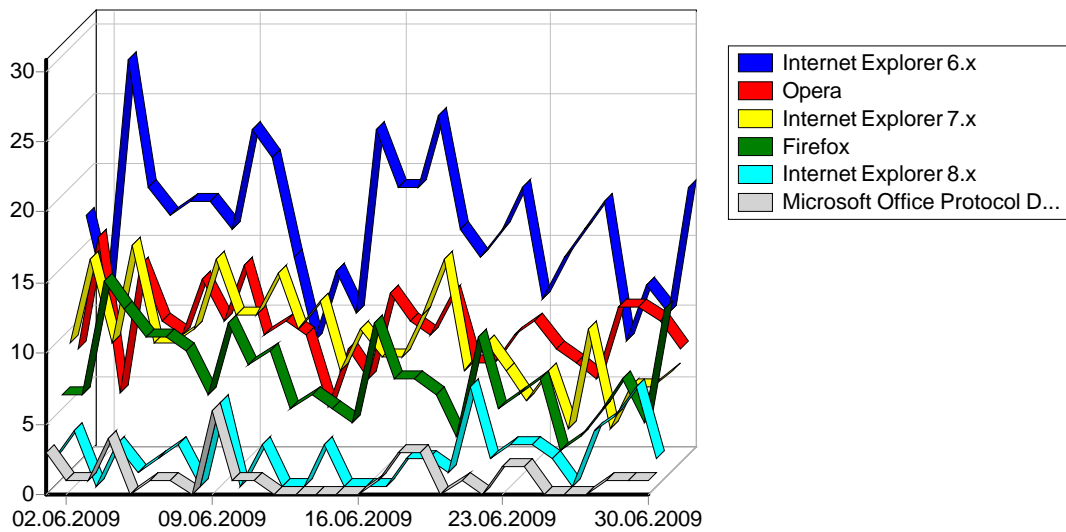


| | URL | |
|----|---|-------|
| 1 | | 3,026 |
| 2 | http://search.qip.ru/search?query= | 34 |
| 3 | http://www.ovale.ru | 31 |
| 4 | http://sport.brot.ru | 28 |
| 5 | http://veselo.brot.ru | 28 |
| 6 | http://spravki.brot.ru | 28 |
| 7 | http://goods.brot.ru | 28 |
| 8 | http://real.brot.ru | 28 |
| 9 | http://events.brot.ru | 28 |
| 10 | http://www.akvador.ru | 28 |
| 11 | http://vkontakte.ru/away.php?to=http://www.epov.ru | 7 |
| 12 | http://forum.violity.kiev.ua/viewtopic.php?t=38889&postdays=0&postorder=asc&start=100 | 6 |
| 13 | http://epov.ru/index.php?section=gbook | 6 |
| 14 | http://whois.domaintools.com/epov.ru | 5 |
| 15 | http://3-rome.livejournal.com/tag/ , ° » ¶ | 4 |
| 16 | http://www.predistoria.org/index.php?name=Forums&file=viewtopic&t=1113&postdays=0&postorder=asc&start=195 | 4 |

| | | |
|----|---|--------------|
| 17 | http://talk.ru/lady/45-956-genealogicheskoe-derevo-read.shtml | 3 |
| 18 | http://famili-v2.narod.ru/rus/roda/epov.htm | 3 |
| 19 | http://www.krasner.ru/links/links.htm | 3 |
| 20 | http://www.n-v.su/forum/ | 3 |
| 21 | http://www.google.ru/search?hl=ru&q=epov&lr=&rlz=1W1ADBF_ru&aq=f&oq= | 2 |
| 22 | http://www.grabrss.ru | 2 |
| 23 | http://www.google.ru/search?q= | 2 |
| 24 | http://go.mail.ru/search?utf8in=1&q=&sputnik=1 | 2 |
| 25 | http://www.google.com.au/search?hl=en&q=epov&meta=&aq=f&oq= | 2 |
| 26 | http://zalizyaka.livejournal.com/12087.html | 2 |
| 27 | http://www.google.ru/search?q= &ie=utf-8&oe=utf-8&aq=t&rls=org.mozilla:ru:official&client=firefox-a | 2 |
| 28 | http://www.google.com/custom?hl=ru&inlang=ru&client=pub-2785318338354919&cof=&ie=windows-1251&oe=windows-1251&q= + + &btnG= &lr= | 2 |
| 29 | <a href="http://nova.rambler.ru/search?btnG= ° , !&query= - <">http://nova.rambler.ru/search?btnG= ° , !&query= - < | 2 |
| 30 | http://ru.wikipedia.org/wiki/_ . ° ± ° ° » ..._ „ ° » | 2 |
| 31 | http://3-rome.livejournal.com/188290.html | 2 |
| 32 | http://search.live.com/results.aspx?q=online | 2 |
| 33 | http://www.google.com/search?client=opera&rls=ru&q= ... ¶ μ μ+ „ ° » + μ , &sourceid=opera&ie=utf-8&oe=utf-8 | 1 |
| 34 | <a href="http://www.google.com/search?hl=ru&client=opera&rls=ru&hs=7nG&q= , % ° , μ » < + , &btnG= &lr=">http://www.google.com/search?hl=ru&client=opera&rls=ru&hs=7nG&q= , % ° , μ » < + , &btnG= &lr= | 1 |
| 35 | <a href="http://www.google.com.ua/search?q= , ° <+ μ °&hl=ru&start=10&sa=N">http://www.google.com.ua/search?q= , ° <+ μ °&hl=ru&start=10&sa=N | 1 |
| 36 | http://www.google.com/search?client=opera&rls=ru&q= ‡ ¶ ¶ μ &sourceid=opera&ie=utf-8&oe=utf-8 | 1 |
| 37 | http://www.google.com/search?hl=en&q=epov&btnG=Google+Search&aq=f&oq= | 1 |
| 38 | http://www.google.com/search?client=opera&rls=ru&q= „ , + , μ » + + + » ... ° &sourceid=opera&ie=utf-8&oe=utf-8 | 1 |
| 39 | http://www.google.com/search?hl=ru&client=opera&q= μ ‡ + μ % ° &btnG= &lr= | 1 |
| 40 | http://www.google.com/Top/World/Russian/ ± % μ , / “ μ μ ° » / □ ° » / | 1 |
| 41 | <a href="http://www.google.com/search?client=opera&q= μ ° ± , <+ + . ° ± ° ° » μ&sourceid=opera&ie=utf-8&oe=utf-8">http://www.google.com/search?client=opera&q= μ ° ± , <+ + . ° ± ° ° » μ&sourceid=opera&ie=utf-8&oe=utf-8 | 1 |
| 42 | <a href="http://www.google.com/m/search?client=ms-opera_mb_no&channel=bm&hl=ru&ct=fsh&q= „ ° † μ < ...">http://www.google.com/m/search?client=ms-opera_mb_no&channel=bm&hl=ru&ct=fsh&q= „ ° † μ < ... | 1 |
| 43 | http://www.google.com/m/search?client=ms-samsung&channel=mm&ct=fsh&q= μ ‡ μ ° + μ ‡ ° , + | 1 |
| 44 | http://www.google.com/search?client=opera&q= § , ° + ± » ° , .+ » μ ° + - + .+ μ + » » μ , . ° † .&sourceid=opera&ie=utf-8&oe=utf-8 | 1 |
| 45 | <a href="http://www.google.com/m/search?client=ms-sonyericsson&channel=bm&ct=fsh&q= + - < ...">http://www.google.com/m/search?client=ms-sonyericsson&channel=bm&ct=fsh&q= + - < ... | 1 |
| 46 | <a href="http://www.google.com/cse?q= μ ±+ °+ . μ † < ...&type=oovoo2_0mshp&pr=oovoo2_0&lz=us&provider=0&searchtypeid=0&ei=utf-8&fr=vmn&btnsh=Gsearch&hl=en&cx=partner-pub-1863604312000203:bw9y4hysb8t&cof=FORID:11&ie=UTF-8&ad=w9&num=10">http://www.google.com/cse?q= μ ±+ °+ . μ † < ...&type=oovoo2_0mshp&pr=oovoo2_0&lz=us&provider=0&searchtypeid=0&ei=utf-8&fr=vmn&btnsh=Gsearch&hl=en&cx=partner-pub-1863604312000203:bw9y4hysb8t&cof=FORID:11&ie=UTF-8&ad=w9&num=10 | 1 |
| 47 | http://www.google.com/search?client=opera&rls=ru&q= » ‡ ° + μ &sourceid=opera&ie=utf-8&oe=utf-8 | 1 |
| 48 | http://www.google.com/search?client=opera&rls=ru&hl=ru&ie=UTF-8&oe=UTF-8&q= ° ° °+ °&sourceid=opera&lr=lang_ru | 1 |
| 49 | http://www.google.com/search?client=opera&q= μ μ + ° . ° &sourceid=opera&ie=utf-8&oe=utf-8 | 1 |
| 50 | http://www.google.com/search?client=opera&q= € μ , μ+ » μ μ+ + &sourceid=opera&ie=utf-8&oe=utf-8 | 1 |
| | | 3,373 |
| | | 3,769 |

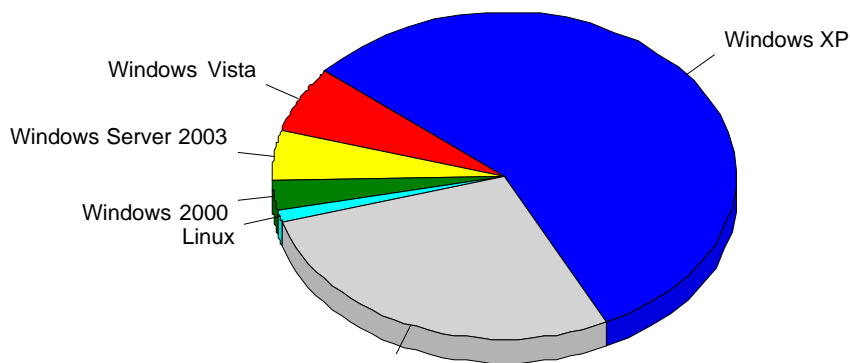
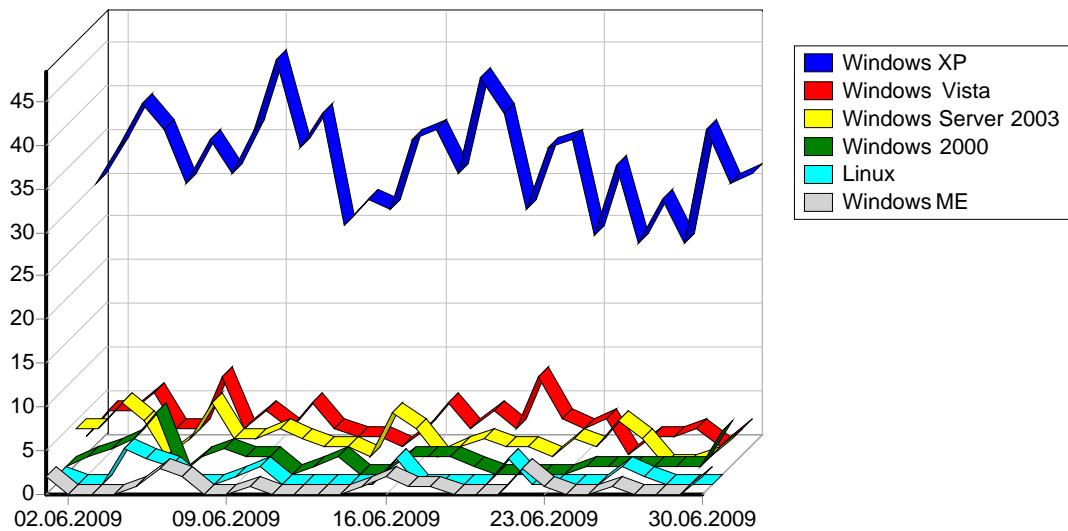


| | | |
|---|---------|------------|
| | | |
| 1 | Yandex | 264 |
| 2 | Rambler | 12 |
| | | 276 |



| | | | | % |
|----|-------------------------------------|-------|-----|--------|
| 1 | Internet Explorer 6.x | 7,785 | 491 | 26.95% |
| 2 | Opera | 4,595 | 282 | 15.48% |
| 3 | Internet Explorer 7.x | 6,507 | 279 | 15.31% |
| 4 | Firefox | 5,927 | 216 | 11.86% |
| 5 | Internet Explorer 8.x | 2,770 | 67 | 3.68% |
| 6 | Microsoft Office Protocol Discovery | 55 | 34 | 1.87% |
| 7 | real.BROT AutoSearchSites | 28 | 28 | 1.54% |
| 8 | searchsite.akvador allsite | 28 | 28 | 1.54% |
| 9 | goods.BROT AutoSearchSites | 28 | 28 | 1.54% |
| 10 | ovalebot3.ovale.ru facepage | 28 | 28 | 1.54% |
| 11 | sport.BROT AutoSearchSites | 28 | 28 | 1.54% |
| 12 | spravki.BROT AutoSearchSites | 28 | 28 | 1.54% |
| 13 | events.BROT AutoSearchSites | 28 | 28 | 1.54% |
| 14 | veselo.BROT AutoSearchSites | 28 | 28 | 1.54% |

| | | | | |
|----|--|---------------|--------------|----------------|
| 15 | Safari | 372 | 27 | 1.48% |
| 16 | Microsoft Data Access Internet Publishing Provider Protocol Discovery | 272 | 27 | 1.48% |
| 17 | Internet Explorer 5.x | 293 | 25 | 1.37% |
| 18 | | 17 | 13 | 0.71% |
| 19 | Netscape 5.x | 148 | 12 | 0.66% |
| 20 | igdeSpyder (compatible; igde.ru; +http://igde.ru/doc/tech.html) | 69 | 11 | 0.60% |
| 21 | Mozilla/3.0 (compatible; Indy Library) | 137 | 10 | 0.55% |
| 22 | ; | 32 | 7 | 0.38% |
| 23 | Netscape 4.x | 14 | 6 | 0.33% |
| 24 | Mozilla/5.0 (compatible; Google Desktop) | 6 | 6 | 0.33% |
| 25 | blackcrawl/Nutch-0.9 (crawl for fun; www.zipfelchappe.com; zipfelchappe@localhost) | 10 | 5 | 0.27% |
| 26 | Mail.Ru/1.0 | 3,626 | 5 | 0.27% |
| 27 | Microsoft Office Existence Discovery | 11 | 5 | 0.27% |
| 28 | Internet Explorer 2.x | 11 | 4 | 0.22% |
| 29 | Microsoft-WebDAV-MiniRedir/6.0.6001 | 36 | 4 | 0.22% |
| 30 | Yanga WorldSearch Bot v1.1/beta (http://www.yanga.co.uk/) | 37 | 4 | 0.22% |
| 31 | libwww-perl/5.805 | 22 | 4 | 0.22% |
| 32 | Netscape 0.x | 10 | 3 | 0.16% |
| 33 | ovalebot/7.5rusu | 3 | 3 | 0.16% |
| 34 | Internet Explorer 3.x | 8 | 3 | 0.16% |
| 35 | FlickySearchBot/1.0 (+testMode) | 9 | 3 | 0.16% |
| 36 | Mozilla/5.0 (compatible; Charlotte/1.1; http://www.searchme.com/support/) | 4 | 2 | 0.11% |
| 37 | Mozilla/5.0 (compatible; Boomerang/0.7) | 22 | 2 | 0.11% |
| 38 | Avant Browser | 2 | 2 | 0.11% |
| 39 | Download Master | 5 | 2 | 0.11% |
| 40 | Mozilla/4.7 (compatible; OffByOne; Windows 2000) Webster Pro V3.4 | 6 | 2 | 0.11% |
| 41 | SonyEricssonT700/R3DA Browser/NetFront/3.4 Profile/MIDP-2.1 Configuration/CLDC-1.1 JavaPlatform/JP-8.3.2 | 26 | 2 | 0.11% |
| 42 | Mozilla/5.0 (compatible; discobot/1.1; +http://discoveryengine.com/discobot.html) | 4 | 2 | 0.11% |
| 43 | YaDirectBot/1.0 | 2 | 1 | 0.05% |
| 44 | XXX<? echo \"w0000t!\"; ?>XXX | 6 | 1 | 0.05% |
| 45 | web_aylarbin2.6.3@unspecified.mail | 1 | 1 | 0.05% |
| 46 | http://advisor.wmtransfer.com/ | 1 | 1 | 0.05% |
| 47 | libwww-perl/5.79 | 1 | 1 | 0.05% |
| 48 | web_ay (larbin2.6.3@unspecified.mail) | 1 | 1 | 0.05% |
| 49 | core-project/1.0 | 1 | 1 | 0.05% |
| 50 | Wget | 2 | 1 | 0.05% |
| | | 33,090 | 1,802 | 98.90% |
| | | 33,510 | 1,822 | 100.00% |



| | | | | % |
|----|---------------------|--------|-----|--------|
| 1 | Windows XP | 21,211 | 972 | 56.84% |
| 2 | | 5,663 | 396 | 23.16% |
| 3 | Windows Vista | 4,139 | 110 | 6.43% |
| 4 | Windows Server 2003 | 593 | 87 | 5.09% |
| 5 | Windows 2000 | 543 | 47 | 2.75% |
| 6 | Linux | 522 | 22 | 1.29% |
| 7 | Windows ME | 44 | 21 | 1.23% |
| 8 | Windows NT | 107 | 16 | 0.94% |
| 9 | Windows 98 | 225 | 11 | 0.64% |
| 10 | Windows 95 | 25 | 8 | 0.47% |
| 11 | Mac OS | 253 | 7 | 0.41% |
| 12 | FreeBSD | 57 | 5 | 0.29% |
| 13 | Sun OS | 115 | 3 | 0.18% |
| 14 | Windows CE | 8 | 3 | 0.18% |
| 15 | Windows Win32s | 1 | 1 | 0.06% |
| 16 | Windows 3.x | 4 | 1 | 0.06% |

| | | | | |
|--|--|---------------|--------------|----------------|
| | | 33,510 | 1,710 | 100.00% |
|--|--|---------------|--------------|----------------|