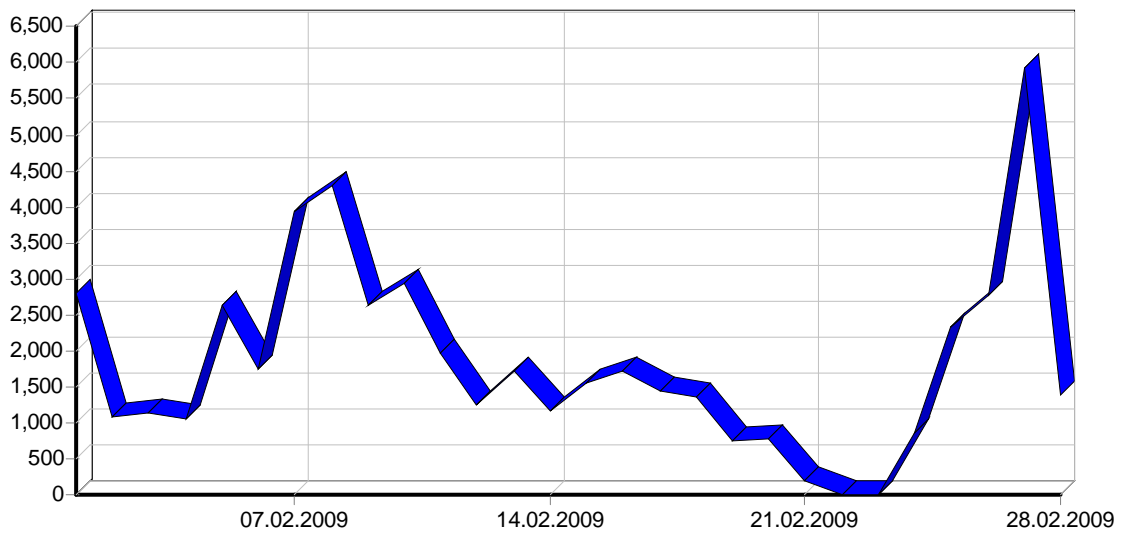
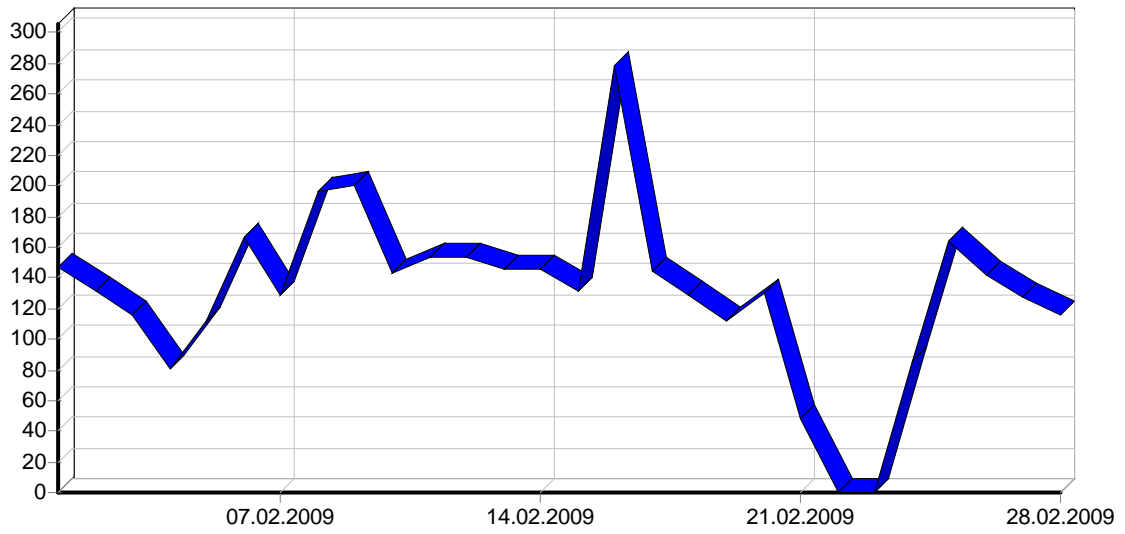
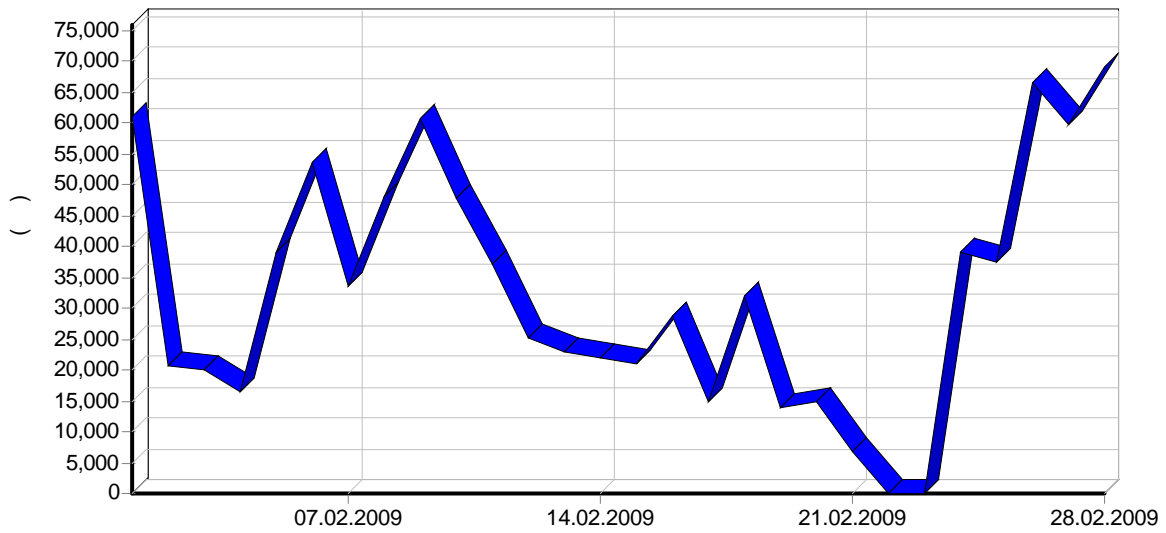
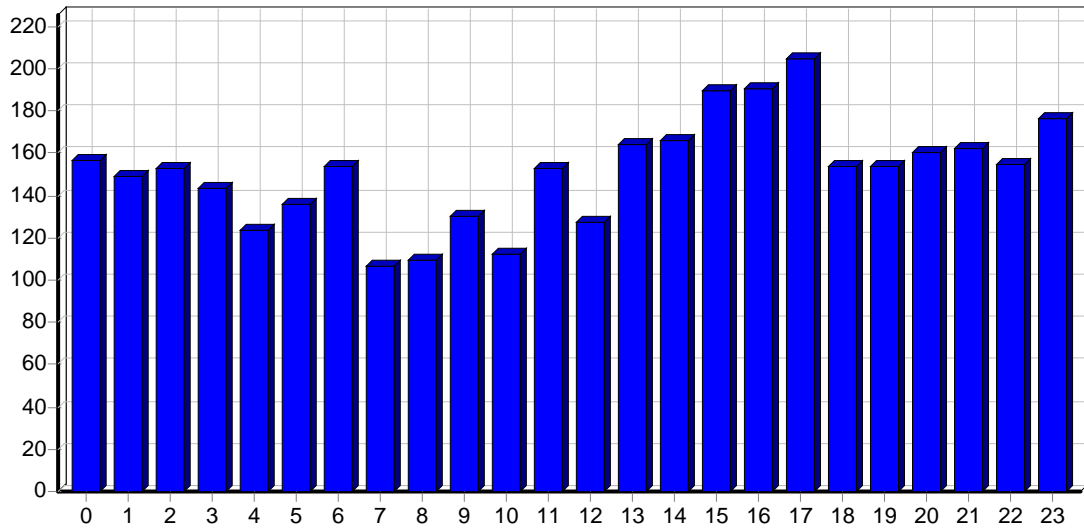


	51,382
	1,835
	14.15
	7,388
	4,324
	16,161
	577
	4.45
	3,631
	129
IP-	1,833
	890.79
	31.81
	17.75
	251.22

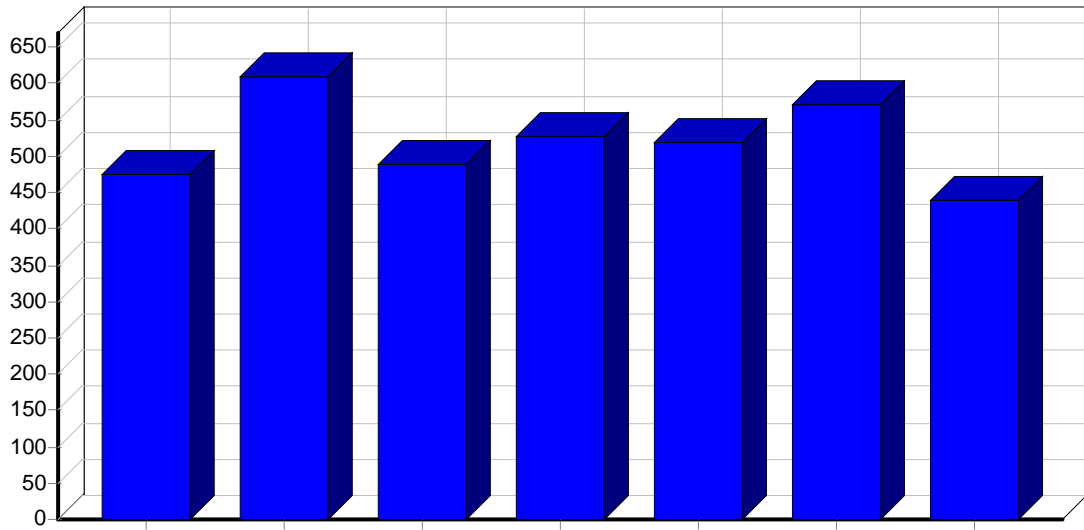




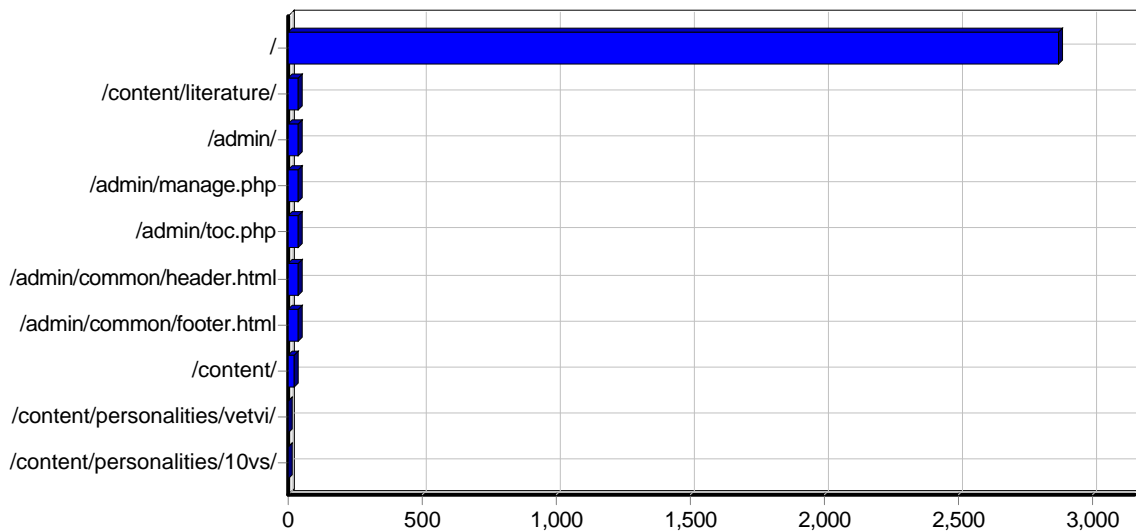
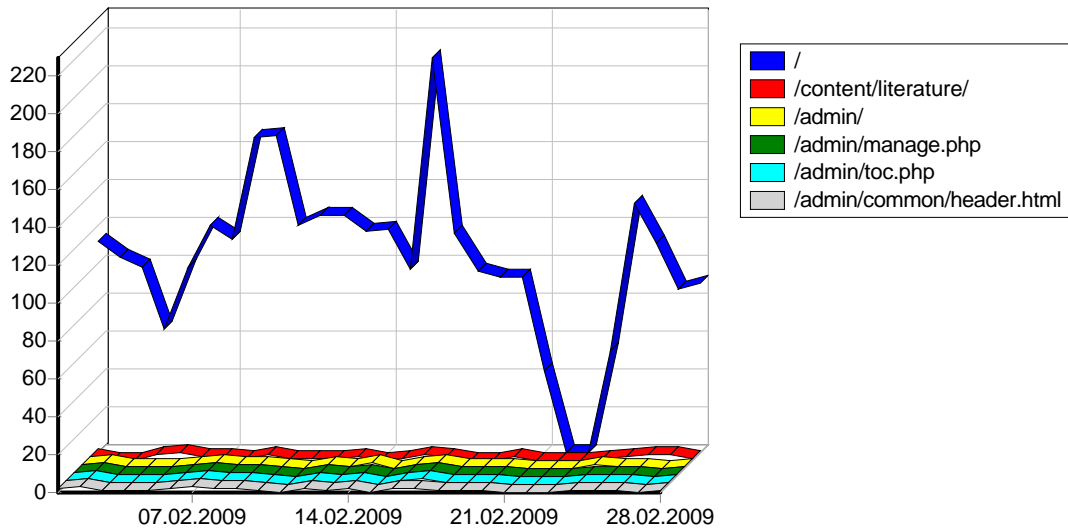
					()
01.02.2009	2,805	761	147	07:18	61,033
02.02.2009	1,075	248	131	03:19	20,772
03.02.2009	1,130	295	116	06:14	19,980
04.02.2009	1,043	181	81	02:03	16,352
05.02.2009	2,621	627	112	06:06	39,054
06.02.2009	1,743	594	166	06:02	53,684
07.02.2009	3,942	1,908	129	10:25	33,629
08.02.2009	4,300	2,184	197	03:52	48,106
09.02.2009	2,643	1,094	200	05:01	60,781
10.02.2009	2,943	1,127	143	06:15	47,881
11.02.2009	1,974	400	154	08:08	37,133
12.02.2009	1,258	508	153	04:31	25,330
13.02.2009	1,724	644	146	04:33	22,793
14.02.2009	1,152	445	146	04:53	21,897
15.02.2009	1,544	437	132	07:40	21,124
16.02.2009	1,726	459	278	04:15	28,657
17.02.2009	1,430	558	145	05:24	14,854
18.02.2009	1,346	378	129	08:24	31,968
19.02.2009	750	206	112	04:48	13,802
20.02.2009	784	269	130	06:53	14,951
21.02.2009	202	102	48	07:57	6,789
22.02.2009	-	-	-	-	-
23.02.2009	-	-	-	-	-
24.02.2009	855	223	86	03:29	38,909
25.02.2009	2,334	642	164	05:12	37,463
26.02.2009	2,757	414	142	03:21	66,464
27.02.2009	5,918	1,111	128	07:17	59,767
28.02.2009	1,383	346	116	08:03	68,981
	51,382	16,161	3,631	05:43	912,166



			()
00:00 - 00:59	3,695	157	48,571
01:00 - 01:59	1,917	149	29,077
02:00 - 02:59	2,346	153	24,134
03:00 - 03:59	1,798	143	23,065
04:00 - 04:59	1,018	124	12,521
05:00 - 05:59	1,380	136	28,155
06:00 - 06:59	1,247	154	17,836
07:00 - 07:59	610	107	9,463
08:00 - 08:59	814	109	14,442
09:00 - 09:59	2,809	130	65,259
10:00 - 10:59	3,480	112	36,250
11:00 - 11:59	2,394	153	52,518
12:00 - 12:59	1,578	127	19,485
13:00 - 13:59	2,933	164	78,316
14:00 - 14:59	1,727	166	74,520
15:00 - 15:59	1,896	190	31,743
16:00 - 16:59	1,548	191	28,477
17:00 - 17:59	2,414	205	41,344
18:00 - 18:59	2,928	154	73,878
19:00 - 19:59	2,667	154	35,409
20:00 - 20:59	3,376	160	38,153
21:00 - 21:59	2,082	162	30,217
22:00 - 22:59	1,965	155	44,168
23:00 - 23:59	2,760	176	55,155
	51,382	3,631	912,166

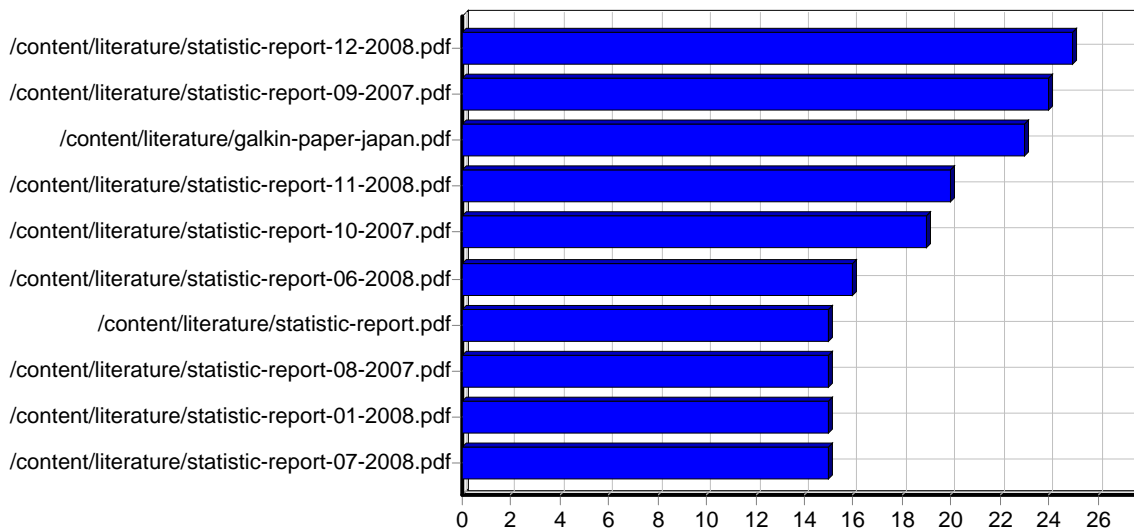
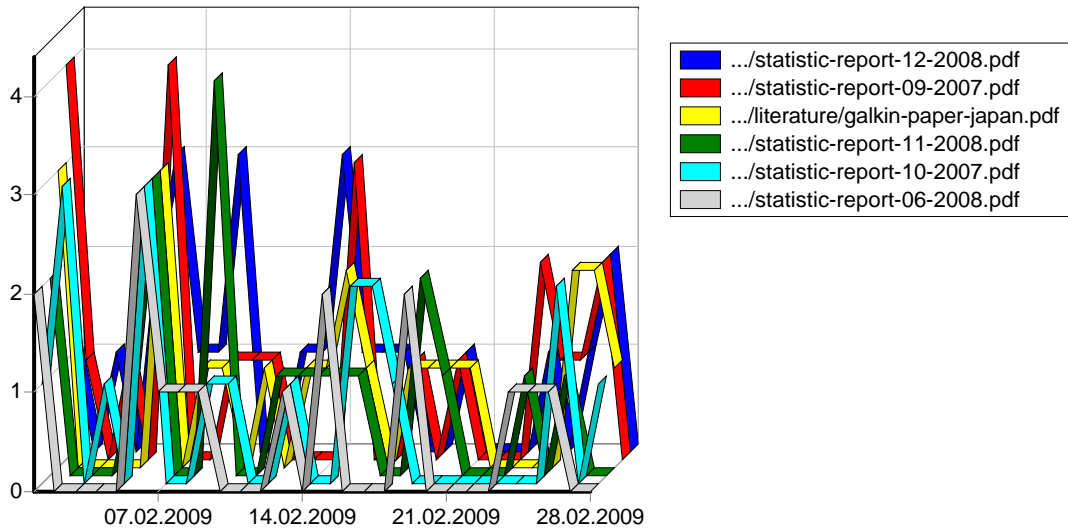


			()
	8,649	476	130,263
	5,444	609	110,211
	6,358	490	121,626
	6,697	528	122,917
	7,386	519	144,651
	10,169	570	151,196
	6,679	439	131,298
	51,382	3,631	912,166

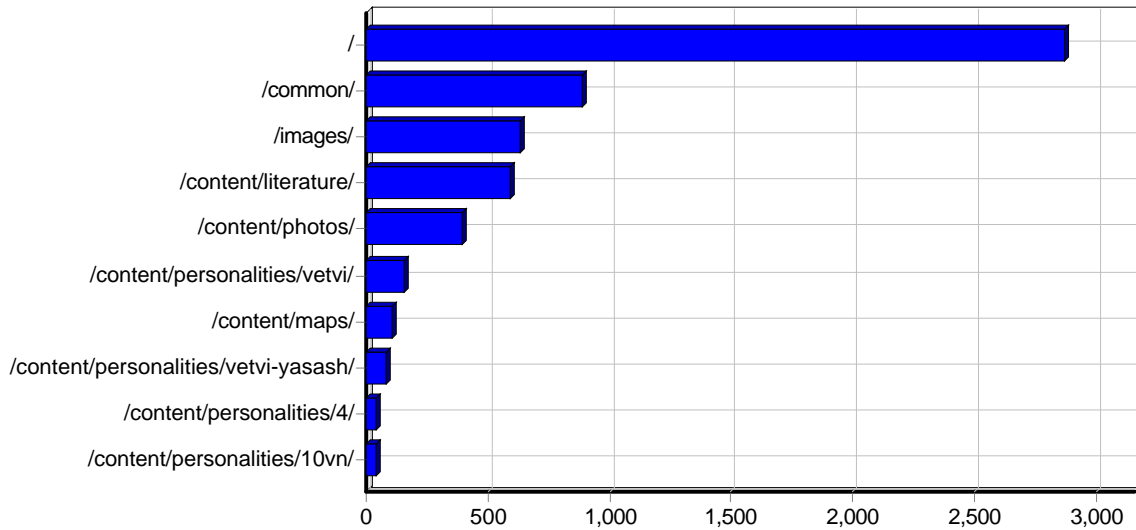
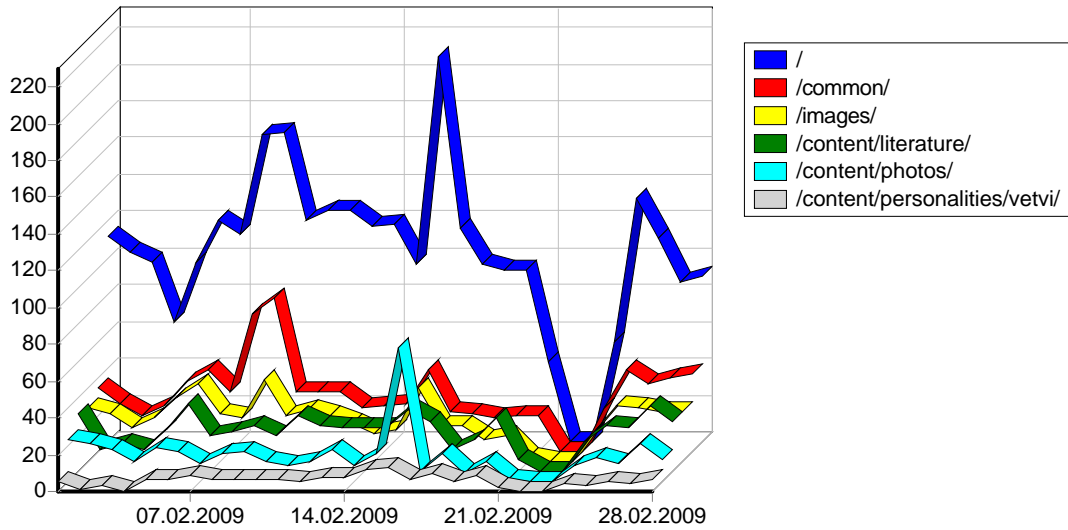


					()
1	http://www.epov.ru/	12,867	0	2,872	201,695
2	http://www.epov.ru/content/literature/	57	0	40	4
3	http://www.epov.ru/admin/	83	0	37	36
4	http://www.epov.ru/admin/manage.php	190	0	35	24,815
5	http://www.epov.ru/admin/toc.php	52	0	35	55
6	http://www.epov.ru/admin/common/header.html	44	0	34	7
7	http://www.epov.ru/admin/common/footer.html	44	0	34	8
8	http://www.epov.ru/content/	1,348	0	19	409
9	http://www.epov.ru/content/personalities/vetvi/	3	0	3	0
10	http://www.epov.ru/content/personalities/10vs/	3	0	3	0
11	http://www.epov.ru/content/personalities/3/	2	0	2	0
12	http://www.epov.ru/content/personalities/7/	2	0	2	0
13	http://www.epov.ru//	2	0	2	13

14	http://www.epov.ru/content/personalities/8vs/	1	0	1	0
15	http://www.epov.ru/content/personalities/9vn/	1	0	1	0
16	http://www.epov.ru http://epov.ru/	4	0	1	42
17	http://www.epov.ru http://www.epov.ru/	1	0	1	109
18	http://www.epov.ru/content/personalities/9vs/	1	0	1	0
19	http://www.epov.ru/content/personalities/vetvi-yasash/	1	0	1	0
20	http://www.epov.ru/content/personalities/1/	1	0	1	0
21	http://www.epov.ru/content/personalities/10sm/	1	0	1	0
22	http://www.epov.ru/	1	0	1	10
23	http://www.epov.ru/content/personalities/	1	0	1	0
24	http://www.epov.ru/content/personalities/5/	1	0	1	0
25	http://www.epov.ru/content/personalities/6/	1	0	1	0
26	http://www.epov.ru/content/personalities/10vi/	1	0	1	0
27	http://www.epov.ru/content/personalities/4/	1	0	1	0
		14,714	0	-	227,208

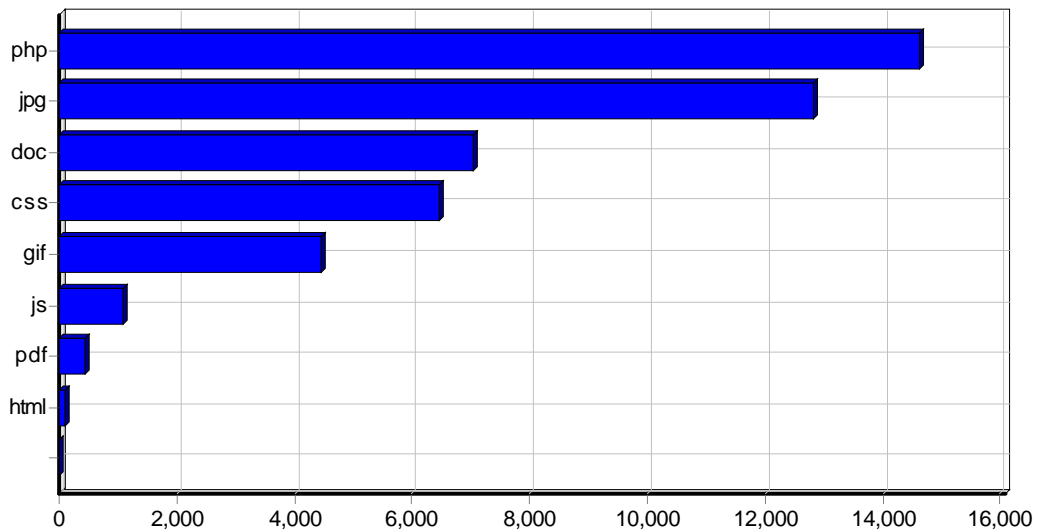
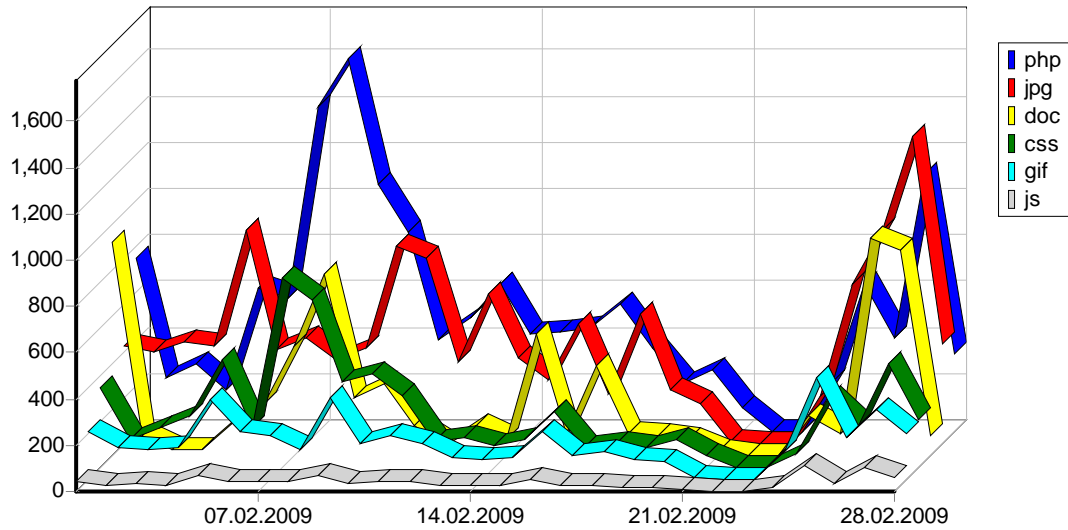


					()
1	http://www.epov.ru/content/literature/statistic-report-12-2008.pdf	25	0	25	2,929
2	http://www.epov.ru/content/literature/statistic-report-09-2007.pdf	31	4	24	3,033
3	http://www.epov.ru/content/literature/galkin-paper-japan.pdf	27	4	23	5,202
4	http://www.epov.ru/content/literature/statistic-report-11-2008.pdf	20	0	20	1,808
5	http://www.epov.ru/content/literature/statistic-report-10-2007.pdf	20	0	19	1,952
6	http://www.epov.ru/content/literature/statistic-report-06-2008.pdf	16	0	16	1,538
7	http://www.epov.ru/content/literature/statistic-report.pdf	18	3	15	2,856
8	http://www.epov.ru/content/literature/statistic-report-08-2007.pdf	15	0	15	1,640
9	http://www.epov.ru/content/literature/statistic-report-01-2008.pdf	18	0	15	2,142
10	http://www.epov.ru/content/literature/statistic-report-07-2008.pdf	15	0	15	1,842
11	http://www.epov.ru/content/literature/statistic-report-12-2007.pdf	14	0	14	985
12	http://www.epov.ru/content/literature/statistic-report-02-2008.pdf	13	0	13	1,344
13	http://www.epov.ru/content/literature/statistic-report-06-2007.pdf	15	1	13	805
14	http://www.epov.ru/content/literature/statistic-report-05-2008.pdf	13	0	13	1,477
15	http://www.epov.ru/content/literature/statistic-report-05-2007.pdf	13	0	13	770
16	http://www.epov.ru/content/literature/statistic-report-10-2008.pdf	13	0	13	950
17	http://www.epov.ru/content/literature/statistic-report-08-2008.pdf	13	0	13	1,394
18	http://www.epov.ru/content/literature/statistic-report-11-2007.pdf	12	0	12	983
19	http://www.epov.ru/content/literature/statistic-report-07-2007.pdf	11	1	11	927
20	http://www.epov.ru/content/literature/statistic-report-09-2008.pdf	11	0	11	823
21	http://www.epov.ru/content/literature/astrahantsev-10.pdf	11	0	11	1,499
22	http://www.epov.ru/content/literature/statistic-report-03-2008.pdf	11	0	11	1,066
23	http://www.epov.ru/content/literature/astrahantsev-9.pdf	9	0	9	4,611
24	http://www.epov.ru/content/literature/astrahantsev-2.pdf	8	0	8	16,616
25	http://www.epov.ru/content/literature/astrahantsev-6.pdf	8	0	8	9,920
26	http://www.epov.ru/content/literature/astrahantsev-7.pdf	8	0	8	13,689
27	http://www.epov.ru/content/literature/achik-tash.pdf	7	0	7	10,308
28	http://www.epov.ru/content/literature/astrahantsev-1.pdf	7	0	7	8,603
29	http://www.epov.ru/content/literature/astrahantsev-5.pdf	7	0	7	9,459
30	http://www.epov.ru/content/literature/astrahantsev-8.pdf	7	0	7	2,029
31	http://www.epov.ru/content/literature/astrahantsev-3.pdf	7	0	7	8,850
32	http://www.epov.ru/content/literature/astrahantsev-4.pdf	7	0	7	10,250
33	http://www.epov.ru/content/literature/VEpov_Ot-Achik-tasha_do_Everesta.pdf	4	0	4	2,845
34	http://www.epov.ru/content/literature/Spravochnik-spisok.pdf	9	6	2	44,615
		443	19	-	179,778

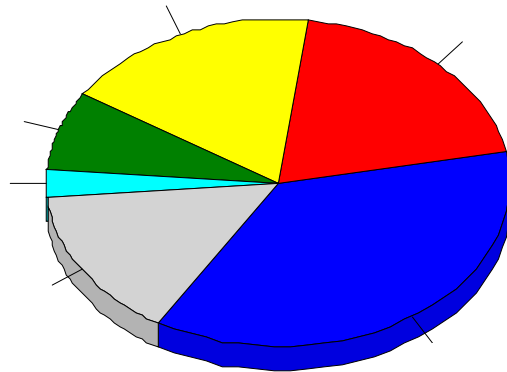
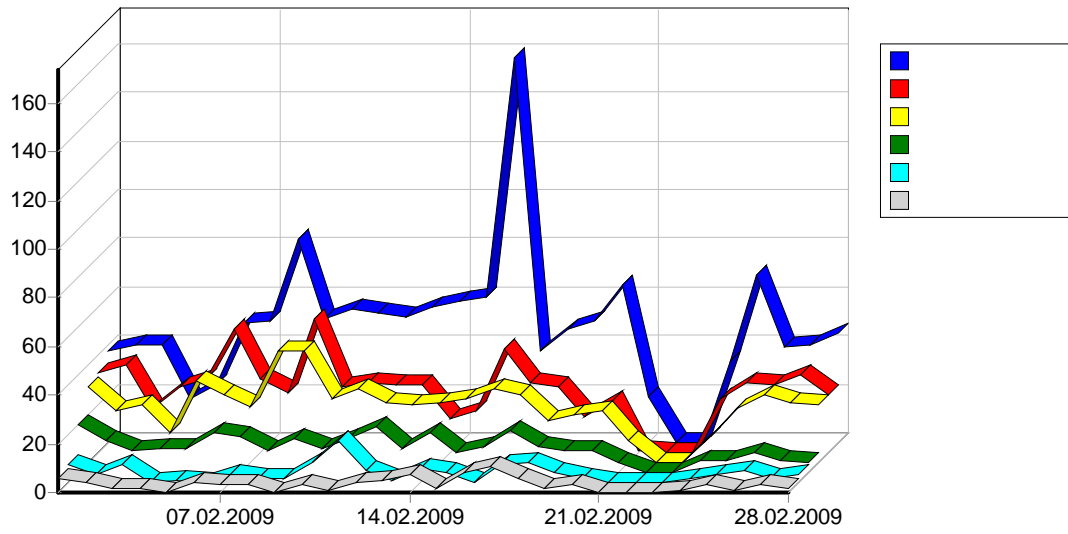


					()
1	http://www.epov.ru/	12,873	0	2,872	201,759
2	http://www.epov.ru/common/	7,326	0	885	10,308
3	http://www.epov.ru/images/	7,732	6	636	47,992
4	http://www.epov.ru/content/literature/	1,902	28	596	272,915
5	http://www.epov.ru/content/photos/	8,267	20	393	243,940
6	http://www.epov.ru/content/personalities/vetvi/	758	0	157	13,785
7	http://www.epov.ru/content/maps/	687	0	105	34,851
8	http://www.epov.ru/content/personalities/vetvi-yasash/	386	0	83	7,173
9	http://www.epov.ru/content/personalities/4/	104	0	39	1,222
10	http://www.epov.ru/content/personalities/10vn/	469	0	38	3,702
11	http://www.epov.ru/admin/	325	0	37	24,907
12	http://www.epov.ru/admin/common/	327	0	36	135
13	http://www.epov.ru/content/personalities/10vs/	1,009	0	36	10,708
14	http://www.epov.ru/content/personalities/10vi/	653	0	35	6,459
15	http://www.epov.ru/admin/images/	41	0	34	3
16	http://www.epov.ru/content/personalities/9vi/	206	0	34	1,885

17	http://www.epov.ru/content/personalities/5/	94	0	30	1,026
18	http://www.epov.ru/content/personalities/10vp/	485	0	29	5,115
19	http://www.epov.ru/content/personalities/6/	95	0	29	985
20	http://www.epov.ru/content/personalities/9vn/	131	0	26	959
21	http://www.epov.ru/content/personalities/8vn/	83	0	26	714
22	http://www.epov.ru/content/personalities/3/	66	1	25	772
23	http://www.epov.ru/content/personalities/10sn/	308	0	24	2,975
24	http://www.epov.ru/content/personalities/8sn/	78	0	20	825
25	http://www.epov.ru/content/personalities/9sn/	117	0	20	1,007
26	http://www.epov.ru/content/personalities/9vs/	158	0	19	1,024
27	http://www.epov.ru/content/	1,348	0	19	409
28	http://www.epov.ru/content/personalities/8vs/	56	0	19	512
29	http://www.epov.ru/content/personalities/7/	86	0	19	849
30	http://www.epov.ru/content/personalities/9vp/	94	0	18	837
31	http://www.epov.ru/content/personalities/10vm/	126	0	14	1,069
32	http://www.epov.ru/content/personalities/8vi/	40	0	13	305
33	http://www.epov.ru/content/personalities/7sm/	34	0	13	331
34	http://www.epov.ru/content/personalities/7sn/	41	0	13	351
35	http://www.epov.ru/content/personalities/10sm/	127	0	12	850
36	http://www.epov.ru/content/personalities/0/	12	0	11	164
37	http://www.epov.ru/content/personalities/8sm/	25	0	11	201
38	http://www.epov.ru/content/personalities/8vp/	32	0	11	223
39	http://www.epov.ru/content/personalities/7ss/	32	0	10	275
40	http://www.epov.ru/content/personalities/1/	12	0	9	100
41	http://www.epov.ru/content/personalities/2/	13	0	8	129
42	http://www.epov.ru/content/broshura/	229	0	7	6,689
43	http://www.epov.ru/content/personalities/8vm/	8	0	7	80
44	http://www.epov.ru/content/personalities/9vm/	9	0	6	60
45	http://www.epov.ru/content/personalities/9sm/	45	0	6	178
46	http://www.epov.ru/	2	0	2	13
47	http://www.epov.ru http://epov.ru/	4	0	1	42
48	http://www.epov.ru http://www.epov.ru/	1	0	1	109
49	http://www.epov.ru/content/personalities/	1	0	1	0
50	http://www.epov.ru/.	1	0	1	10
		47,058	55	-	910,948

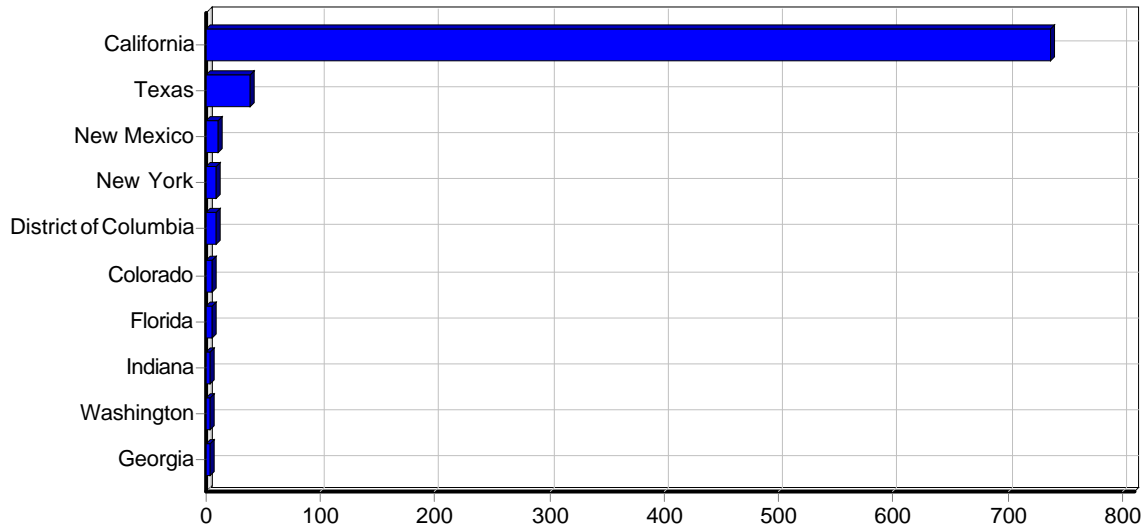


				()
1	php	14,626	0	227,193
2	jpg	12,824	26	343,807
3	doc	7,055	10	148,257
4	css	6,478	0	9,014
5	gif	4,451	0	1,404
6	js	1,087	0	1,414
7	pdf	443	19	179,778
8	html	88	0	15
9		6	0	63
		47,058	55	910,948



				%	()
1		4,341	1,332	36.68%	106,993
2		30,380	719	19.80%	477,286
3		10,366	656	18.07%	225,193
4		693	281	7.74%	19,242
5		114	102	2.81%	636
6		305	86	2.37%	2,176
7		76	68	1.87%	427
8		958	52	1.43%	17,759
9		320	44	1.21%	2,322
10		305	27	0.74%	6,621
11		88	25	0.69%	3,041
12		1,554	22	0.61%	21,330
13		102	22	0.61%	553
14		102	20	0.55%	444

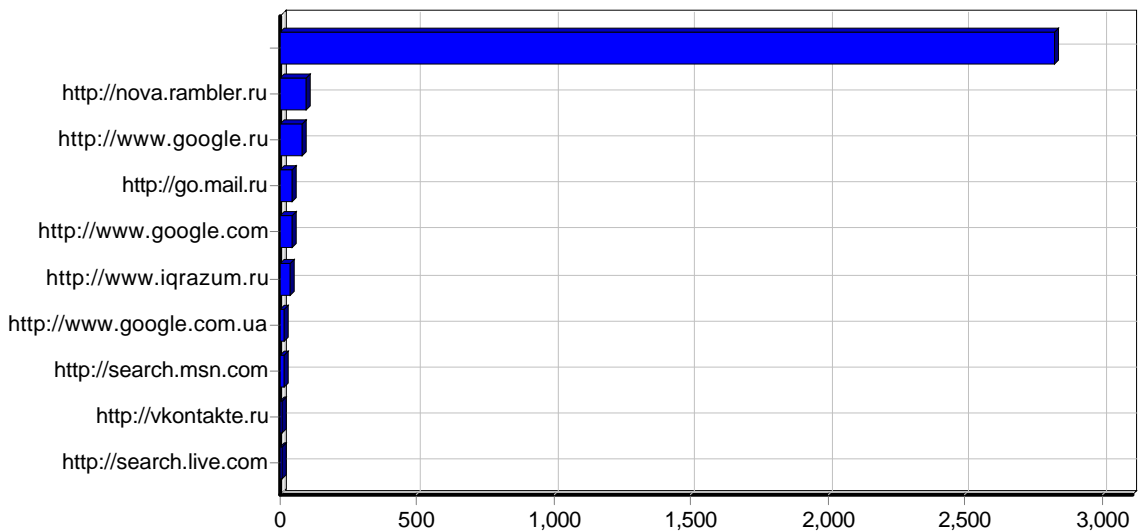
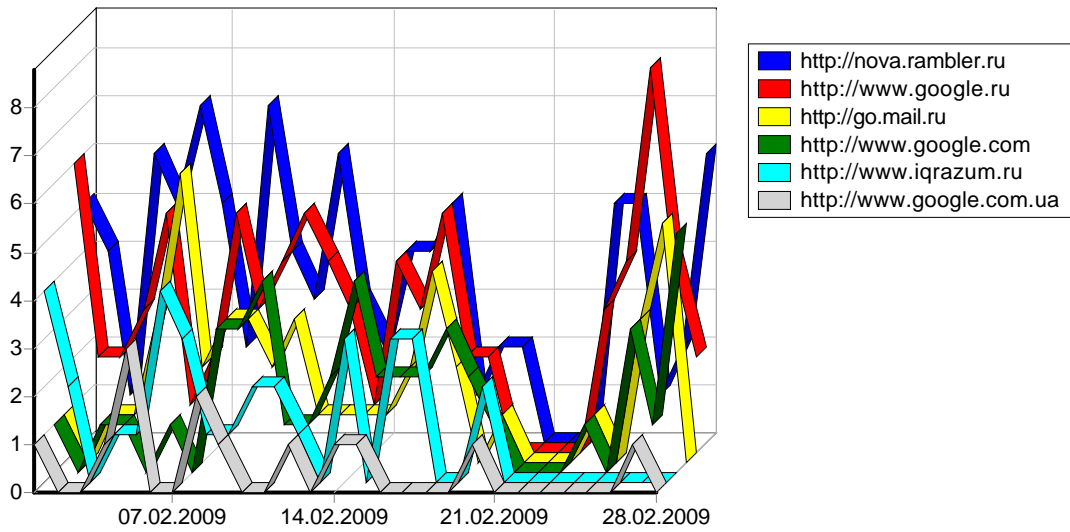
15		35	15	0.41%	218
16		55	13	0.36%	2,505
17		52	13	0.36%	717
18		641	13	0.36%	8,322
19		12	12	0.33%	104
20		233	7	0.19%	5,155
21		99	7	0.19%	994
22		24	6	0.17%	217
23		90	6	0.17%	1,749
24		8	6	0.17%	48
25		110	6	0.17%	1,947
26		25	6	0.17%	694
27		16	6	0.17%	563
28		26	6	0.17%	222
29		22	5	0.14%	679
30		5	5	0.14%	150
31		16	4	0.11%	272
32		33	4	0.11%	138
33		22	4	0.11%	687
34		23	4	0.11%	237
35		36	4	0.11%	300
36		19	3	0.08%	480
37		31	3	0.08%	521
38		4	2	0.06%	390
39		3	2	0.06%	169
40		2	2	0.06%	11
41		4	2	0.06%	96
42		2	2	0.06%	10
43		4	1	0.03%	35
44		4	1	0.03%	68
45		14	1	0.03%	204
46		2	1	0.03%	139
47		1	1	0.03%	10
48		4	1	0.03%	59
49		1	1	0.03%	5
		51,382	3,631	100.00%	912,166



				()
1	California	2,277	737	56,406
2	Texas	66	38	1,272
3	New Mexico	21	11	123
4	New York	536	8	33,946
5	District of Columbia	34	8	654
6	Colorado	5	5	53
7	Florida	19	5	109
8	Indiana	4	4	21
9	Washington	6	3	32
10	Georgia	67	3	1,572
11	Pennsylvania	3	3	29
12	Virginia	13	2	270
13	Louisiana	13	2	217
14	Illinois	102	2	2,007
15	Wisconsin	2	2	10
16	Michigan	2	2	16
17	Utah	3	1	246
18	South Carolina	1	1	5
19	Minnesota	1	1	5
20	Massachusetts	1	1	3
21	Mississippi	2	1	13
22	Ohio	1	1	100
23	New Jersey	14	1	394
		3,193	842	97,514

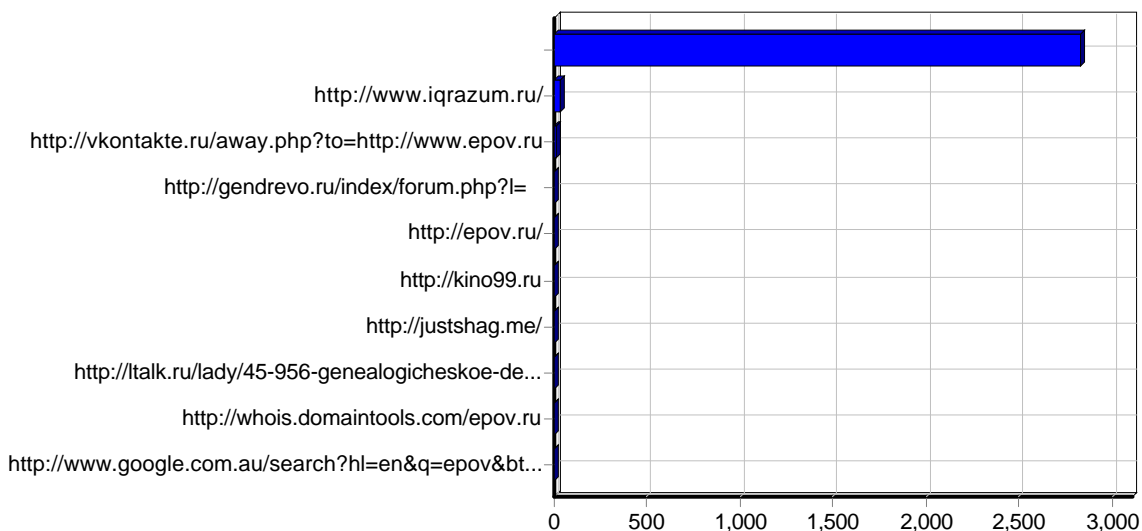
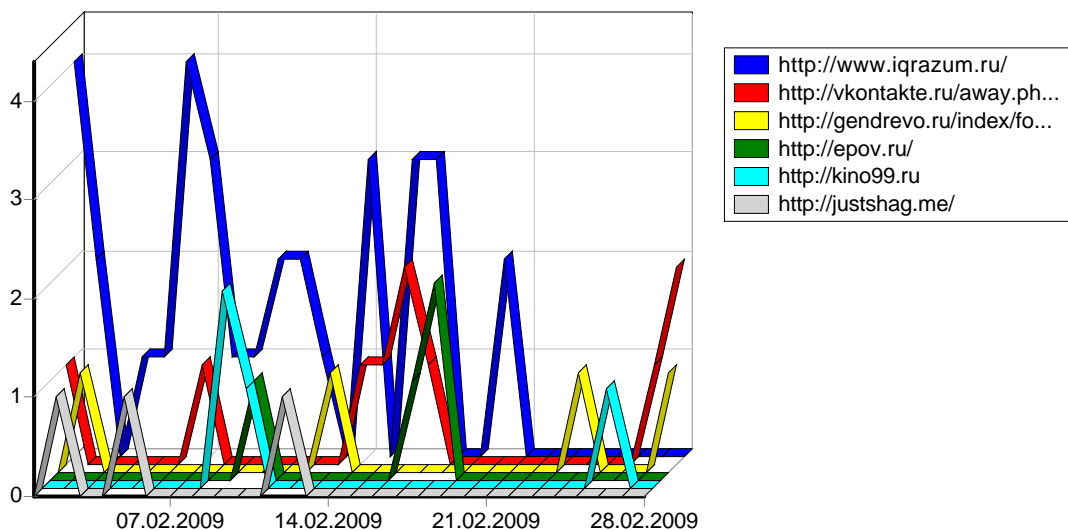
				()
1	Sunnyvale, California,	1,303	430	35,636
2	Moscow,	9,554	344	144,633
3	Mountain View, California,	733	270	18,104

4	Baden,	122	103	689
5	Frankfurt Am Main,	249	79	10,065
6	Singapore,	76	68	427
7	Novosibirsk,	6,660	60	163,286
8	Karlskrona,	37	36	569
9	Saint Petersburg,	7,054	35	44,746
10	Chita,	1,003	34	15,405
11	Erfurt,	69	33	4,603
12	San Antonio, Texas,	42	31	459
13	Toronto,	30	24	415
14	Doha,	102	20	444
15	San Francisco, California,	123	20	596
16	Rome,	23	19	175
17	Kiev,	172	18	2,249
18	Irkutsk,	608	17	9,086
19	Beijing,	57	17	1,875
20	Krasnodar,	635	14	10,825
21	Khabarovsk,	266	13	5,516
22	Forestville,	1,509	11	19,861
23	Albuquerque, New Mexico,	21	11	123
24	Krasnoyarsk,	179	10	2,368
25	Kazan,	105	10	1,244
26	Washington, District of Columbia,	34	8	654
27	Vladivostok,	178	8	2,400
28	Ulan-Ude,	139	8	3,433
29	Hamburg,	21	8	201
30	Ottawa,	10	8	302
31	Z rich,	8	8	43
32	Hamilton,	9	7	49
33	Perm,	66	7	1,723
34	Kharkov,	235	7	4,534
35	Oslo,	99	7	994
36	Cologne,	21	6	237
37	Bucuresti,	90	6	1,749
38	Tranbjerg,	7	6	38
39	Gro wallstadt,	12	6	799
40	Berlin,	6	6	204
41	Yekaterinburg,	193	6	2,075
42	Penza,	88	6	1,252
43	Rigaud,	5	5	27
44	Novgorod,	639	5	10,827
45	Bryansk,	137	5	1,371
46	Sviridov,	286	5	6,168
47	Saskatoon,	7	4	38
48	Harrogate,	211	4	4,830
49	Taipei,	23	4	684
50	Englewood, Colorado,	4	4	42
		33,260	1,881	538,098
		38,380	2,263	653,653



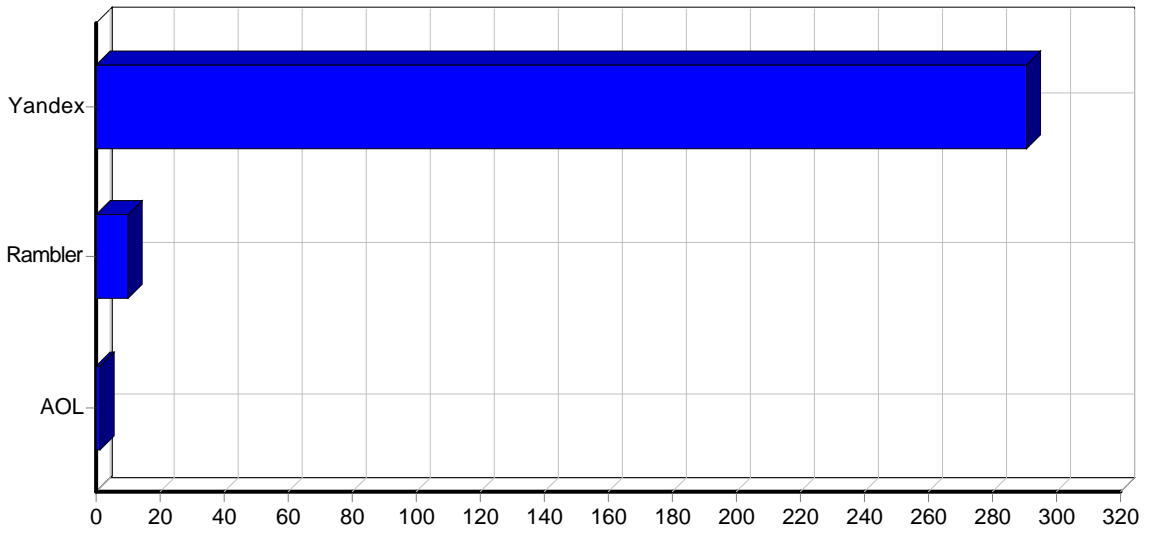
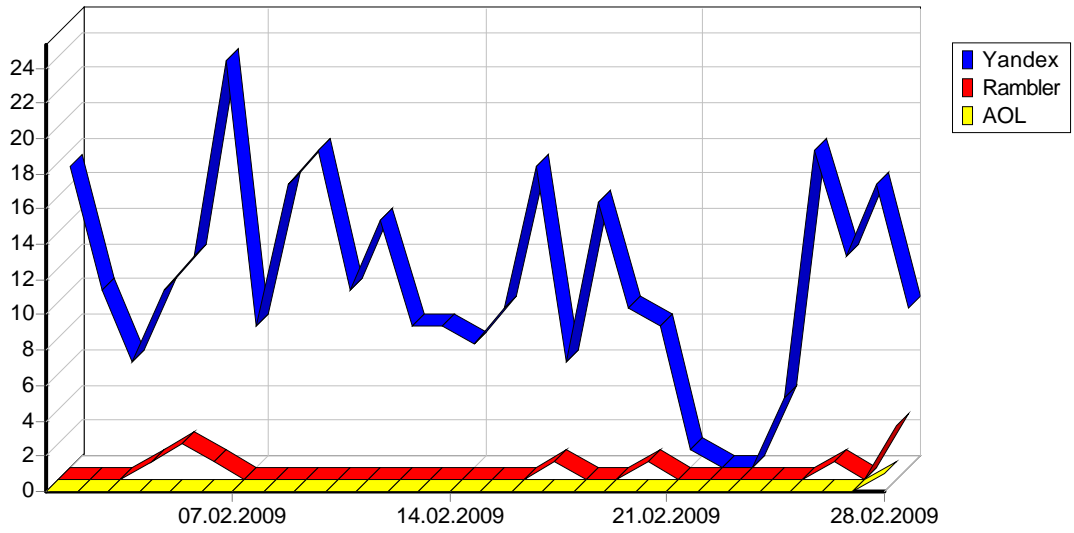
1		2,829
2	http://nova.rambler.ru	97
3	http://www.google.ru	83
4	http://go.mail.ru	47
5	http://www.google.com	44
6	http://www.iqrazum.ru	33
7	http://www.google.com.ua	13
8	http://search.msn.com	11
9	http://vkontakte.ru	10
10	http://search.live.com	10
11	http://epov.ru	6
12	http://m.yandex.ru	6
13	http://gendrevo.ru	6
14	http://win.mail.ru	5

15	http://www.google.de	5
16	http://images.google.ru	5
17	http://demonscity.combats.com	4
18	http://www.nigma.ru	4
19	http://forum.violity.kiev.ua	4
20	http://hghltd.yandex.net	4
21	http://kino99.ru	4
22	http://www.google.com.au	4
23	http://famili-v2.narod.ru	3
24	http://justshag.me	3
25	http://ltalk.ru	3
26	http://whois.domaintools.com	3
27	http://poisk.ru	3
28	http://angelscity.combats.com	2
29	http://lookup.net.ru	2
30	http://www.sitedossier.com	2
31	http://search.qip.ru	2
32	http://www.r-g-d.ru	2
33	http://mail.yandex.ru	2
34	http://dompodarkov.ru	2
35	http://images.google.com.ua	2
36	http://docs.google.com	2
37	http://www.rem-dom.ru	1
38	http://www.krasner.ru	1
39	http://www.aistenok.ru	1
40	http://www.1.smimed.ru	1
41	http://wmusicw.ru	1
42	http://zalizyaka.livejournal.com	1
43	http://uk.search.yahoo.com	1
44	http://webmastercoffee.com	1
45	http://www.krasimsroim.ru	1
46	http://www.watchvip.ru	1
47	http://www.arh-dom.ru	1
48	http://www.dommst.ru	1
49	http://www.google.com.tw	1
50	http://www.ovale.ru	1
		3,281
		3,325

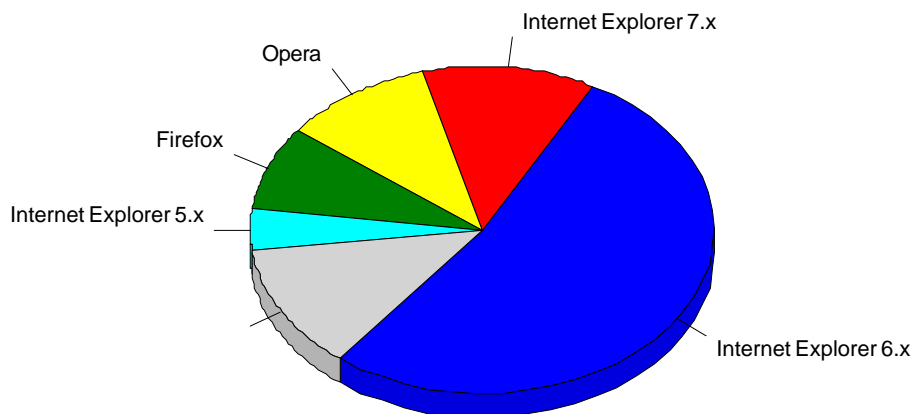
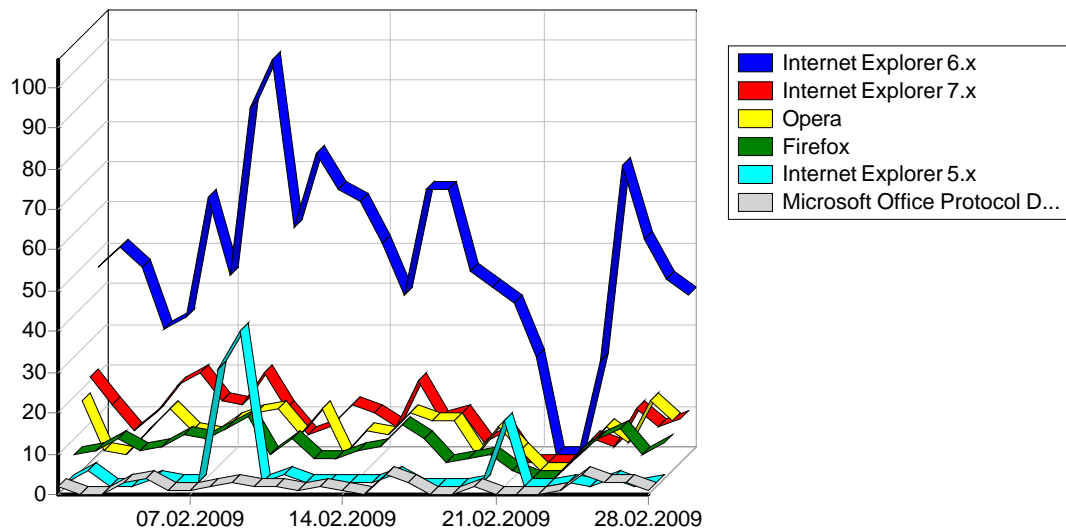


	URL	
1		2,829
2	http://www.iqrazum.ru/	33
3	http://vkontakte.ru/away.php?to=http://www.epov.ru	10
4	http://gendrevo.ru/index/forum.php?l=	4
5	http://epov.ru/	4
6	http://kino99.ru	4
7	http://justshag.me/	3
8	http://talk.ru/lady/45-956-genealogicheskoe-derevo-read.shtml	3
9	http://whois.domaintools.com/epov.ru	3
10	http://www.google.com.au/search?hl=en&q=epov&btnG=Google+Search&meta=	3
11	http://m.yandex.ru/search?s=all&query= +	2
12	http://m.yandex.ru/search?s=all&query= + < ...	2
13	http://familii-v2.narod.ru/sovr/saits1.htm	2
14	http://go.mail.ru/search?lfilter=y&mailru=1&q= +	2
15	http://gendrevo.ru/index/site.php	2
16	http://nova.rambler.ru/srch?query=www.epov.ru&old_q=www.homemagazin.ru/shop.htm	2

17	http://forum.violity.kiev.ua/viewtopic.php?t=38889&postdays=0&postorder=asc&start=100	2
18	http://forum.violity.kiev.ua/viewtopic.php?t=38889&start=100	2
19	http://epov.ru/?feed=rss	2
20	http://www.r-g-d.ru/forum/index.php?showtopic=17168	2
21	http://lookup.net.ru/	2
22	http://demonscity.combats.com/inf.pl?1102113459	2
23	http://angelscity.combats.com/inf.pl?login=bks_antivir	2
24	http://www.google.com/search?client=opera&q= &sourceid=opera&ie=utf-8&oe=utf-8	2
25	http://search.msn.com/results.aspx?srch=106&FORM=AS6&q= ° ° +	2
26	http://search.live.com/results.aspx?q= μ ‡ + • &src=IE-SearchBox	2
27	http://www.google.ru/search?hl=ru&newwindow=1&q= &btnG= &lr=&aq=f&oq=	2
28	http://docs.google.com/Doc?id=dc66fw9g_104dbfcz3dx	2
29	http://dompodarkov.ru/	2
30	http://nova.rambler.ru/srch?btnG= ° , !&query= ¶ ' † μ ° ± , &page=3	2
31	http://demonscity.combats.com/inf.pl?login=bks_antivir	2
32	http://www.google.com/search?hl=en&q= ° . ° » † . ° ± ° ° » &btnG=Google+Search&aq=f&oq=	1
33	http://www.google.com/search?hl=ru&client=opera&rls=ru&hs=21P&q= ° » † μ + ± μ&start=10&sa=N	1
34	http://www.google.com/search?hl=en&q= , ° † μ+ + . ° ± ° ° » &btnG=Search	1
35	http://www.google.com/search?client=opera&rls=ru&q= » † ° %° °+ + μ &sourceid=opera&ie=utf-8&oe=utf-8	1
36	http://www.google.com/search?client=opera&rls=ru&q= μ + + » † ° μ&sourceid=opera&ie=utf-8&oe=utf-8	1
37	http://www.google.com/search?client=opera&rls=ru&q= + - † ...&sourceid=opera&ie=utf-8&oe=utf-8	1
38	http://www.google.com/search?client=opera&rls=ru&q= " μ ° ± , † + — ° ± ° ° » μ&sourceid=opera&ie=utf-8&oe=utf-8	1
39	http://www.google.com/search?client=opera&rls=en&q= • .ru&sourceid=opera&ie=utf-8&oe=utf-8	1
40	http://www.google.com/search?client=opera&rls=ru&q=VN920&sourceid=opera&ie=utf-8&oe=utf-8	1
41	http://www.google.com/search?client=opera&rls=ru&q=epovy.ru&sourceid=opera&ie=utf-8&oe=utf-8	1
42	http://www.google.com/search?client=opera&rls=ru&q= + » † ...&sourceid=opera&ie=utf-8&oe=utf-8	1
43	http://www.google.com/search?hl=en&q=116+ , μ » † + » &start=60&sa=N	1
44	http://www.google.com/search?hl=en&q= » ° † . ° ± ° ° » &start=60&sa=N	1
45	http://www.google.com/search?client=opera&rls=ru&q= ... ¶ μ μ+ „ ° » + μ &sourceid=opera&ie=utf-8&oe=utf-8	1
46	http://www.google.com/search?client=opera&rls=ru&q= † μ , + ® € μ &sourceid=opera&ie=utf-8&oe=utf-8	1
47	http://www.google.com/search?client=opera&rls=ru&q= ° + ° . † ° μ , + , + μ &sourceid=opera&ie=utf-8&oe=utf-8	1
48	http://www.google.com/search?client=opera&rls=ru&q= μ μ ° + °+ μ + &sourceid=opera&ie=utf-8&oe=utf-8	1
49	http://www.google.com/search?hl=ru&client=opera&rls=ru&hs=PwS&q= ± %° ° + , ° , °+ ® &start=10&sa=N	1
50	http://www.google.com/search?ie=UTF-8&oe=UTF-8&sourceid=deskbars&newwindow=0&q= " μ ° ± , † + — ° ± ° ° » μ	1
		2,957
		3,325

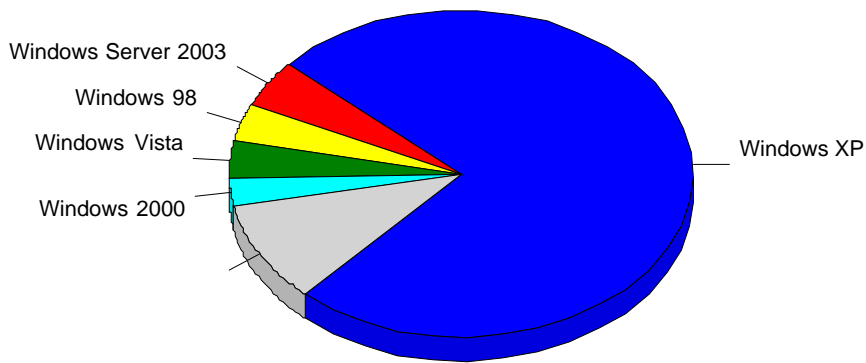
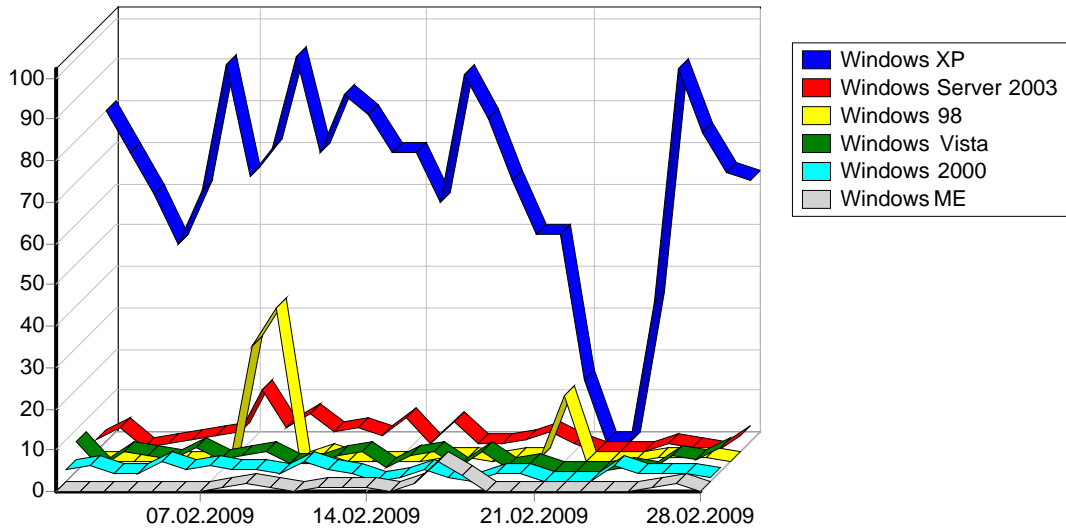


1	Yandex	291
2	Rambler	10
3	AOL	1
		302



				%
1	Internet Explorer 6.x	13,342	1,351	52.69%
2	Internet Explorer 7.x	10,585	310	12.09%
3	Opera	3,564	268	10.45%
4	Firefox	3,004	210	8.19%
5	Internet Explorer 5.x	4,963	108	4.21%
6	Microsoft Office Protocol Discovery	55	47	1.83%
7	Microsoft Data Access Internet Publishing Provider Protocol Discovery	1,164	38	1.48%
8	Safari	961	22	0.86%
9	Microsoft Office Existence Discovery	42	19	0.74%
10		40	18	0.70%
11	Microsoft-WebDAV-MiniRedir/5.1.2600	2,928	17	0.66%
12	Netscape 4.x	40	13	0.51%
13	igdeSpyder (compatible; igde.ru; +http://igde.ru/doc/tech.html)	69	9	0.35%
14	Mozilla/5.0 (compatible; ScoutJet; +http://www.scoutjet.com/)	33	7	0.27%

15	libwww-perl/5.805	7	6	0.23%
16	Microsoft Data Access Internet Publishing Provider DAV 1.1	6	5	0.20%
17	Microsoft Data Access Internet Publishing Provider Cache Manager	6	5	0.20%
18	MSFrontPage/4.0	6	5	0.20%
19	SEC-SGHD830/1.0 NetFront/3.2 Profile/MIDP-2.0 Configuration/CLDC-1.1	299	5	0.20%
20	Mozilla/5.0 (compatible; Google Desktop)	5	5	0.20%
21	Netscape 0.x	15	5	0.20%
22	Mozilla/2.0 (compatible; MS FrontPage 4.0)	6	5	0.20%
23	MSFrontPage/12.0	4	4	0.16%
24	Internet Explorer 8.x	138	4	0.16%
25	Netscape 3.x	12	4	0.16%
26	Java/1.6.0_04	60	4	0.16%
27	Mozilla/4.0 (compatible; MS FrontPage 12.0)	4	4	0.16%
28	Internet Explorer 3.x	6	3	0.12%
29	SonyEricssonK510i/R4EA Browser/NetFront/3.3 Profile/MIDP-2.0 Configuration/CLDC-1.1	79	3	0.12%
30	Mozilla	10	3	0.12%
31	Mozilla/4.7 (compatible; OffByOne; Windows 2000) Webster Pro V3.4	5	2	0.08%
32	Mozilla/5.0 (compatible; WebDataCentreBot/1.0; +http://WebDataCentre.com/)	150	2	0.08%
33	Yanga WorldSearch Bot v1.1/beta (http://www.yanga.co.uk/)	4	2	0.08%
34	Nokia2610/2.0 (06.70) Profile/MIDP-2.0 Configuration/CLDC-1.1	45	2	0.08%
35	OOZBOT/0.20 (-- ; http://www.setooz.com/oozbot.html ; agentname at setooz dot com)	4	2	0.08%
36	Netscape 7.x	8	2	0.08%
37	Download Master	3	2	0.08%
38	Netscape 5.x	54	2	0.08%
39	Gecko/20060612 Minefield/3.0a1	6	2	0.08%
40	Internet Explorer 4.x	7	2	0.08%
41	SonyEricssonK800i/R1ED Browser/NetFront/3.3 Profile/MIDP-2.0 Configuration/CLDC-1.1	69	2	0.08%
42	Java/1.6.0_11	30	2	0.08%
43	SonyEricssonW880i/R8BA Browser/NetFront/3.3 Profile/MIDP-2.0 Configuration/CLDC-1.1	10	1	0.04%
44	Python-urllib/2.4	1	1	0.04%
45	ovalebot/1.9	1	1	0.04%
46	SmallProxy 3.4.9 Free	14	1	0.04%
47	Phoenix	2	1	0.04%
48	Shelob (shelob@gmx.net)	64	1	0.04%
49	dragonfly(ebingbong#playstarmusic.com)	1	1	0.04%
50	XXX<? echo \"w0000t!\"; ?>XXX	6	1	0.04%
		41,937	2,539	99.02%
		42,005	2,564	100.00%



				%
1	Windows XP	28,165	1,741	75.04%
2		5,562	166	7.16%
3	Windows Server 2003	490	107	4.61%
4	Windows 98	401	90	3.88%
5	Windows Vista	1,899	84	3.62%
6	Windows 2000	487	61	2.63%
7	Windows ME	34	23	0.99%
8	Windows NT	4,633	19	0.82%
9	Linux	48	8	0.34%
10	Windows 95	22	7	0.30%
11	Mac OS	206	5	0.22%
12	FreeBSD	46	5	0.22%
13	Windows CE	6	3	0.13%
14	Windows 3.x	3	1	0.04%
15	OS/2	3	0	0.00%
		42,005	2,320	100.00%